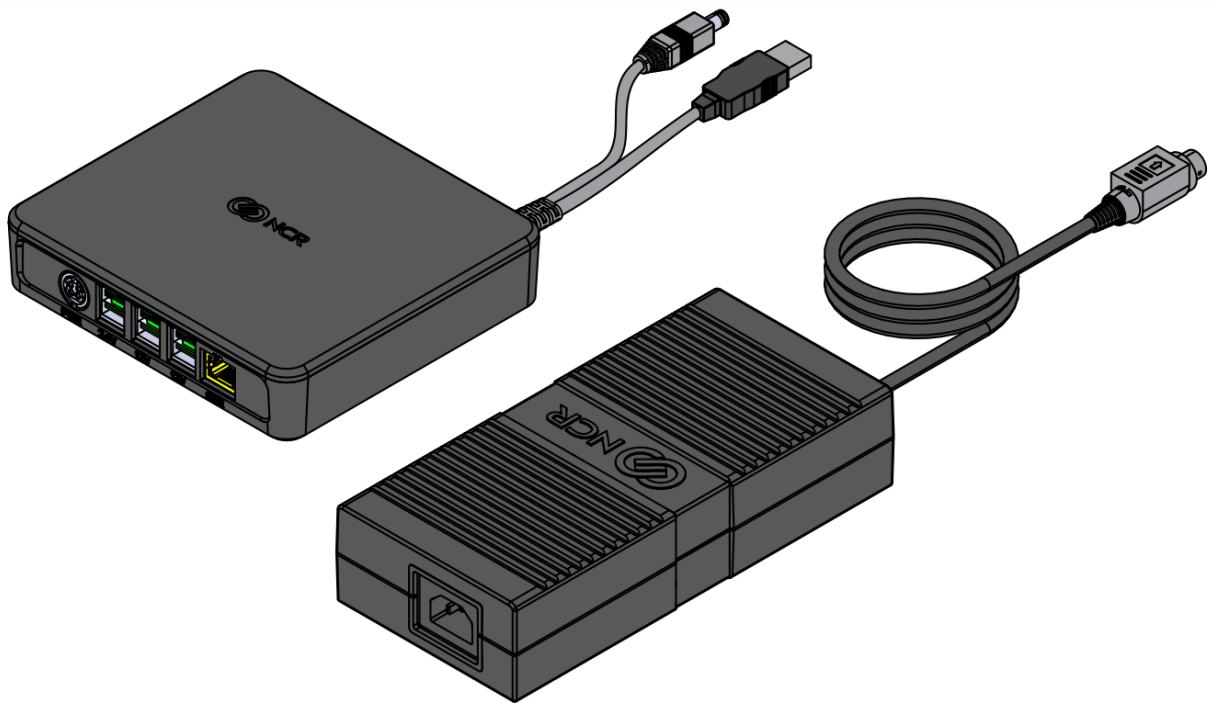


Kit Instructions

Expansion Box, 7746



9700-0036-7746 / 9700-9036-7746
Issue A



The product described in this document is a licensed product of NCR Corporation.

NCR is a registered trademark of NCR Corporation. NCR POS is a trademark of NCR Corporation in the United States and/or other countries. Other product names mentioned in this publication may be trademarks or registered trademarks of their respective companies and are hereby acknowledged.

The terms HDMI and HDMI High-Definition Multimedia Interface, and the HDMI Logo are trademarks or registered trademarks of HDMI Licensing LLC in the United States and other countries.

Where creation of derivative works, modifications or copies of this NCR copyrighted documentation is permitted under the terms and conditions of an agreement you have with NCR, NCR's copyright notice must be included.

It is the policy of NCR Corporation (NCR) to improve products as new technology, components, software, and firmware become available. NCR, therefore, reserves the right to change specifications without prior notice.

All features, functions, and operations described herein may not be marketed by NCR in all parts of the world. In some instances, photographs are of equipment prototypes. Therefore, before using this document, consult with your NCR representative or NCR office for information that is applicable and current.

To maintain the quality of our publications, we need your comments on the accuracy, clarity, organization, and value of this book. Please use the link below to send your comments.

Email: FD230036@ncr.com

Copyright © 2018
By NCR Corporation
Atlanta, GA U.S.A.
All Rights Reserved

Revision Record

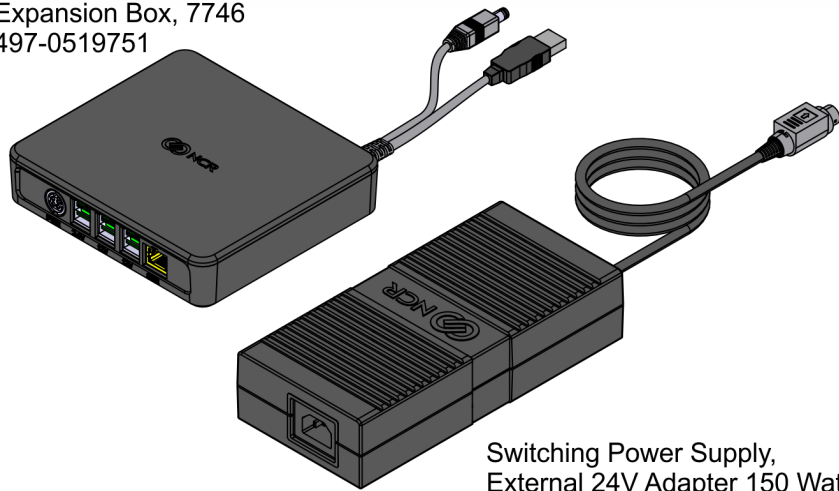
Issue	Date	Remarks
A	Oct 2018	First Issue

Expansion Box

This kit provides an Expansion Box for the NCR PX10 POS (7746).

Kit Contents

Expansion Box, 7746
497-0519751

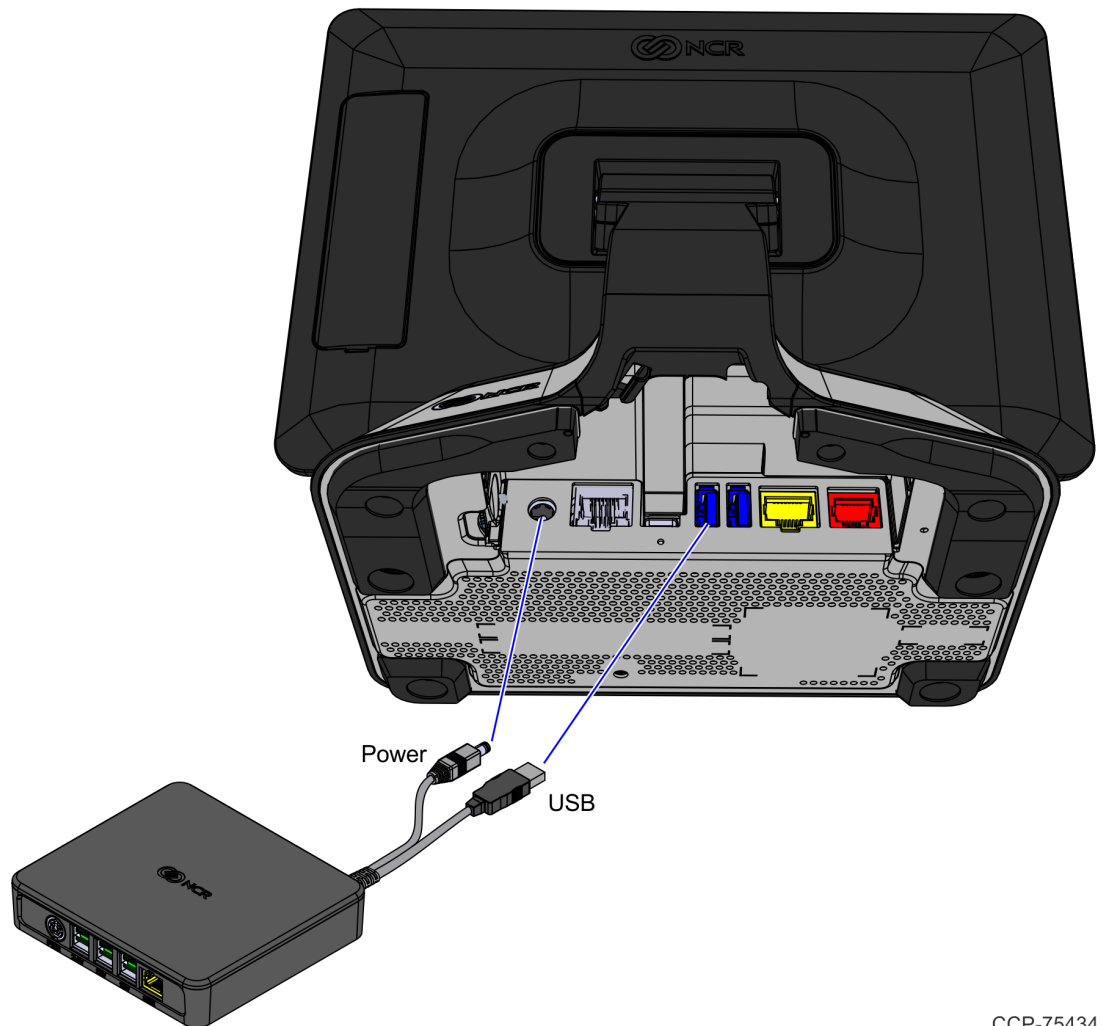


Switching Power Supply,
External 24V Adapter 150 Watt
497-0508598

CCP-75433

Installation Procedure

1. Connect the Expansion Box to the NCR PX10 POS (7746).
 - a. Connect the USB cable of the Expansion Box to any available USB Port on the terminal.
 - b. Connect the Power cable of the Expansion Box to the Power Input Port of the terminal.



2. Connect the Power Supply Cable to the Expansion Box.

