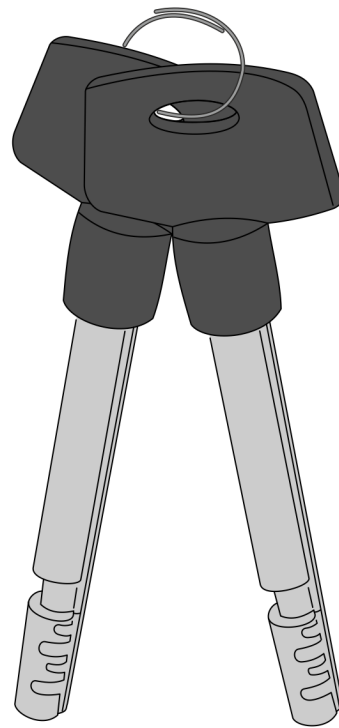


# Kit Instructions

## 7705 Safe Door Replacement Keys



7705-K021  
Issue A



---

The product described in this book is a licensed product of NCR Corporation.

NCR is a registered trademark of NCR Corporation. NCR SelfServ™ is a trademark of NCR Corporation in the United States and/or other countries. Other product names mentioned in this publication may be trademarks or registered trademarks of their respective companies and are hereby acknowledged.

The terms HDMI and HDMI High-Definition Multimedia Interface, and the HDMI Logo are trademarks or registered trademarks of HDMI Licensing LLC in the United States and other countries.

Where creation of derivative works, modifications or copies of this NCR copyrighted documentation is permitted under the terms and conditions of an agreement you have with NCR, NCR's copyright notice must be included.

It is the policy of NCR Corporation (NCR) to improve products as new technology, components, software, and firmware become available. NCR, therefore, reserves the right to change specifications without prior notice.

All features, functions, and operations described herein may not be marketed by NCR in all parts of the world. In some instances, photographs are of equipment prototypes. Therefore, before using this document, consult with your NCR representative or NCR office for information that is applicable and current.

To maintain the quality of our publications, we need your comments on the accuracy, clarity, organization, and value of this book. Please use the link below to send your comments.

*Email:* [FD230036@ncr.com](mailto:FD230036@ncr.com)

Copyright © 2018  
By NCR Corporation  
Duluth, GA U.S.A.  
All Rights Reserved

## Revision Record

Issue	Date	Remarks
A	Jan 2018	First Issue

---

# 7705 Safe Door Replacement Key

---

## Introduction

This kit provides components to change Operating Keys (safe door keys) of a 7705 Safe that uses a LA GARD 2270 Key Lock.

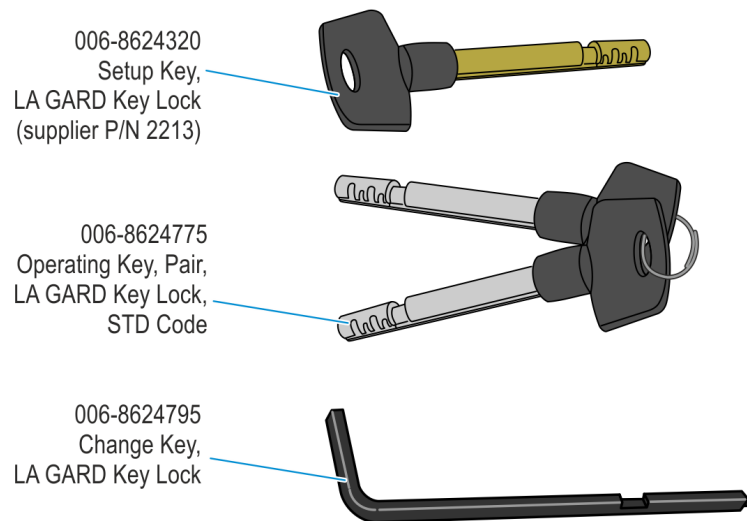
There are three keys required to change safe door keys:

- **Operating Key** - keys used to open and close the Safe Door for normal kiosk operation
- **Change Key (supplier P/N 1307)** —sets up the Key Lock to accept a new Operating Key.
- **Setup Key (supplier P/N 2213)** —brass-colored key used to set up or change Operating Keys



**Note:** Once an Operating Key is set up to open and close the 2270 Key Lock, it can now also be used as the "Setup Key" when changing to a new Operating Key.

## Kit Contents

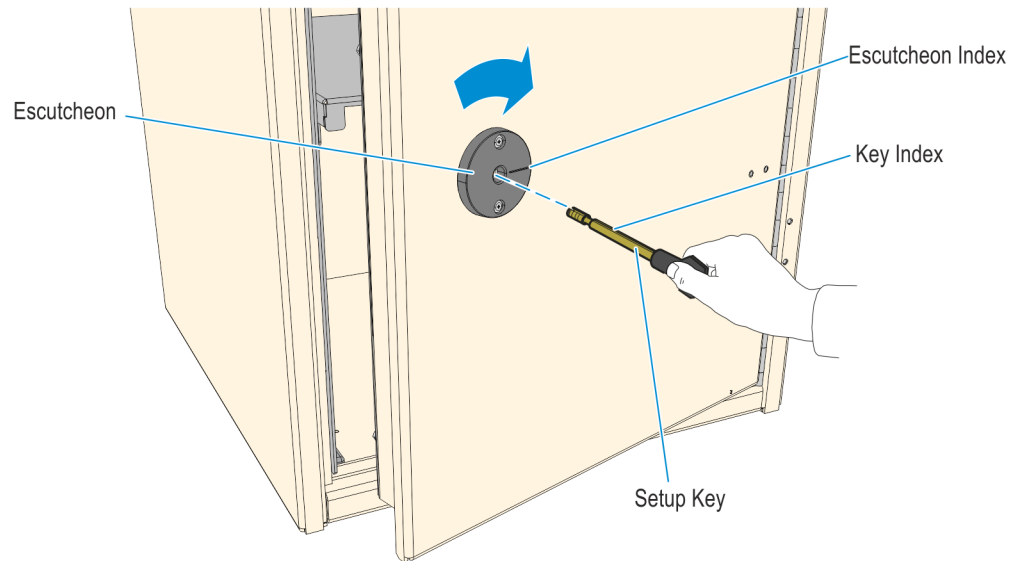


CCP-72880

## Changing Operating Keys

To set up or change operating keys, perform the steps below.

1. [Open the Safe Door.](#)
2. Insert the Setup Key included in this kit (or current Operating Key) into the lock.
3. Slowly turn the Setup Key to the right (clockwise) until the Key Index is aligned with the Escutcheon Index. This is indicated by an audible "click" and the lock bolt will not be retracted.

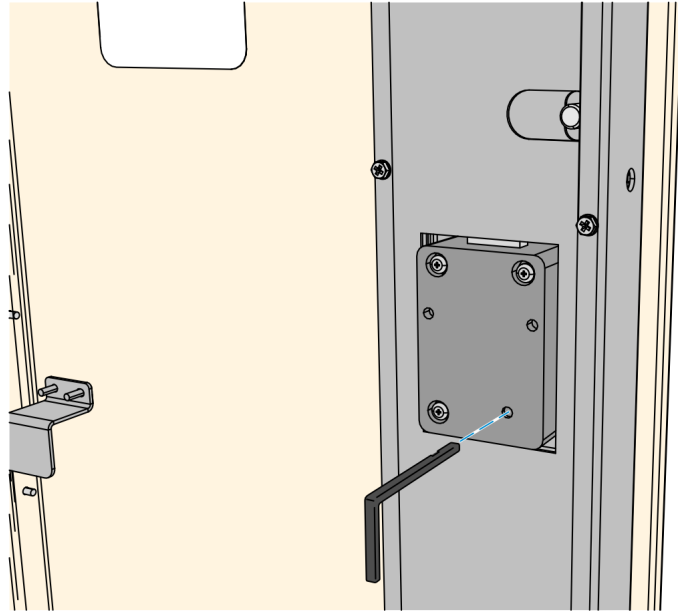


CCP-72878

4. On the back of the Key Lock, insert the Change Key into the change key hole.

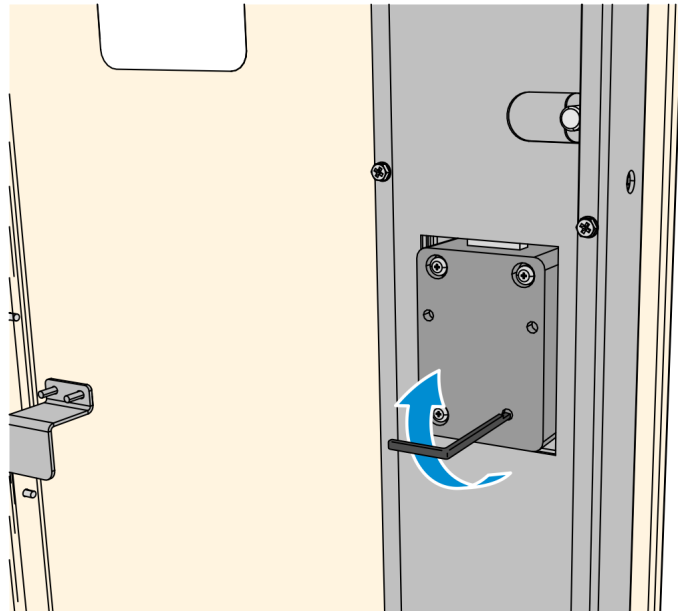


**Note:** If the Change Key does not go in easily, then the wheels are not aligned. Turn the Setup Key to the left (counterclockwise) until it stops, and repeat steps 3 and 4.



CCP-72876

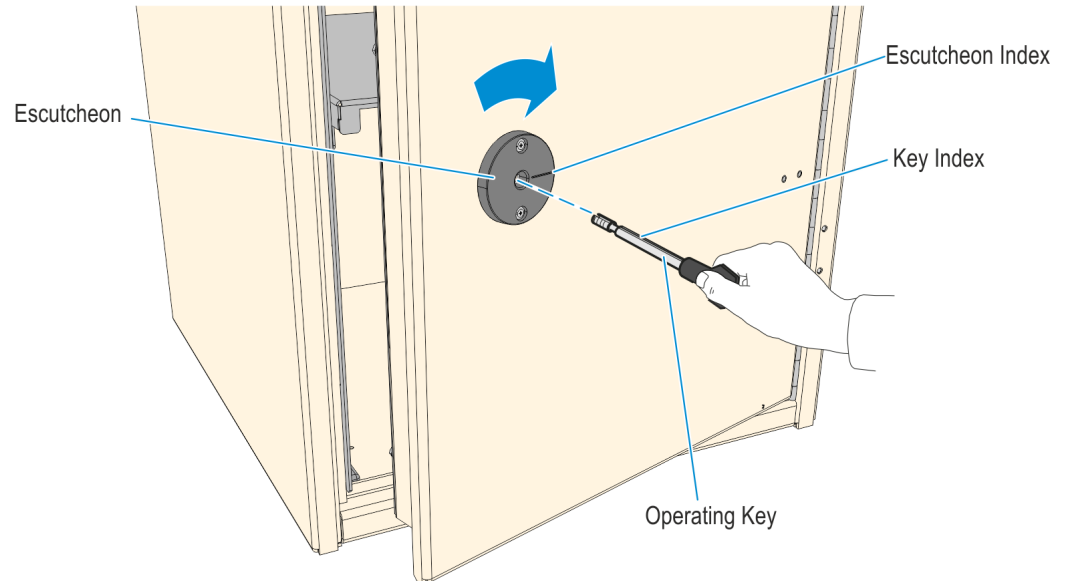
5. Turn the Change Key to the right until it stops, approximately one-quarter turn. Leave the Change Key in the lock.



CCP-72877

6. On the front side, turn the Setup Key to the left and remove it from the lock.

7. Insert the new Operating Key included in this kit into the lock.
8. Slowly turn the new Operating Key to the right until it stops, and the Key Index is aligned with the Escutcheon Index.



CCP-72879

9. With the new Operating Key securely held in this position, turn the Change Key to the left and remove it from the lock. The Lock is now set to the New Operating Key.
10. With the Safe Door open, test the Lock several times by turning the Operating Key to the right until it stops and the lock bolt is retracted.

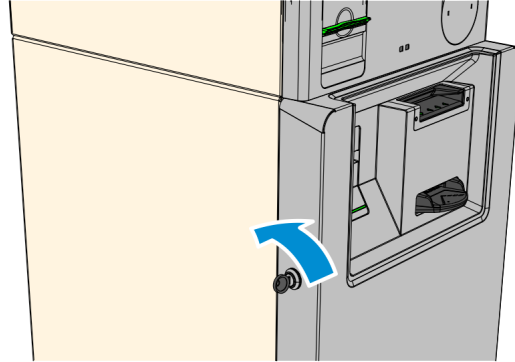


**Note:** Always turn the key fully to the left between opening attempts.

11. Close the Safe Door.

## Opening the 7705 Safe

1. Open the 7705 Front Door. Insert and turn the key backward (counterclockwise when viewing the front side of the lock).



CCP-72873

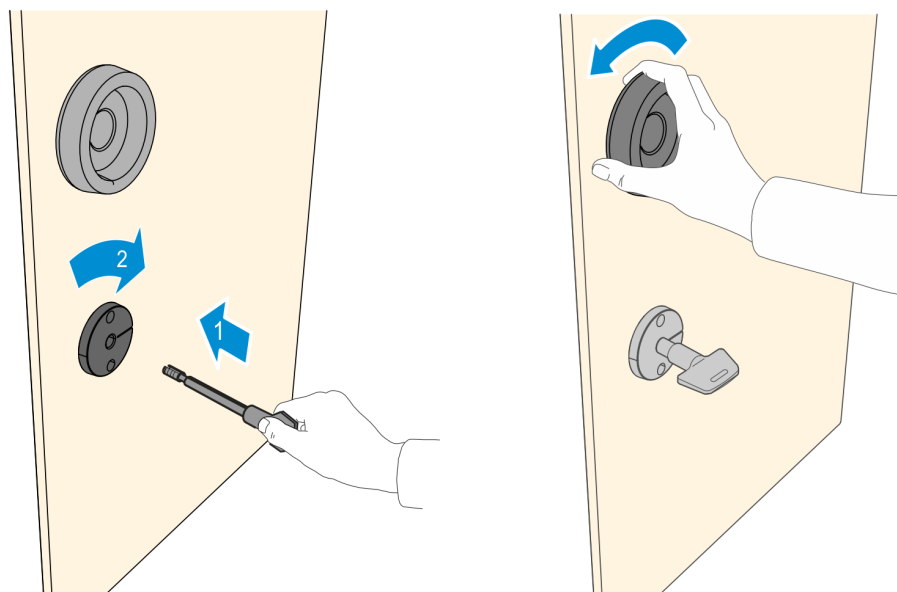
2. Unlock and open the Safe Door.
  - a. Insert the current Operating Key into the lock
  - b. Turn the key to the right (clockwise) until it stops and the Key Lock Bolt is retracted.
  - c. Turn the Door Handle to the left (counterclockwise) to retract the Safe Bolts



**Caution:** Never force the key into the lock. This could cause permanent damage to the lock or the key. Once the Key is inserted, do not apply inward or outward force to the key. This could prevent the lock from opening correctly.



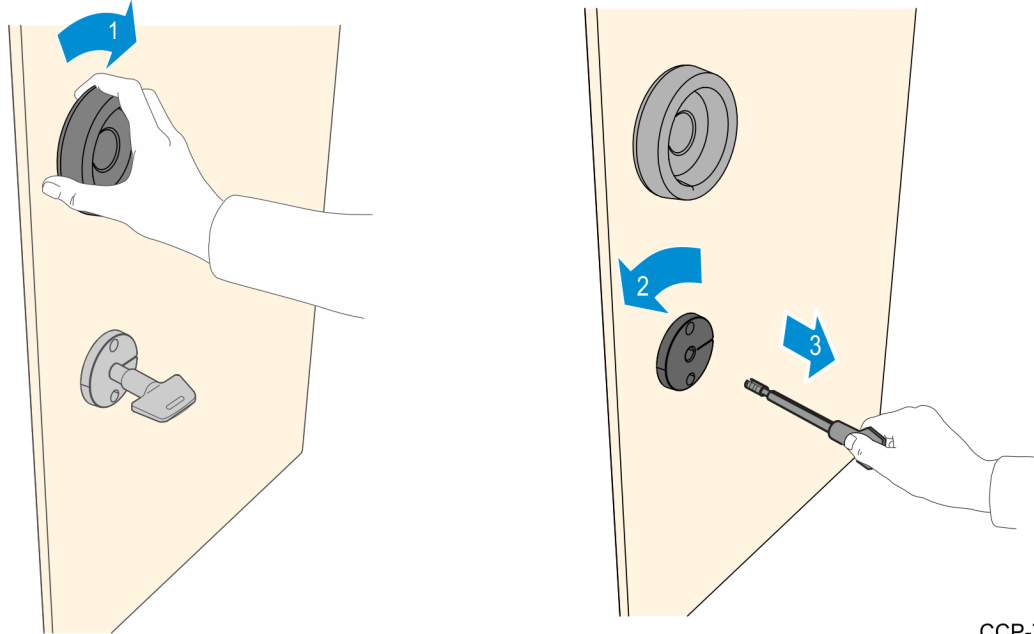
**Note:** The key cannot be removed while the bolt is retracted.



CCP-64038

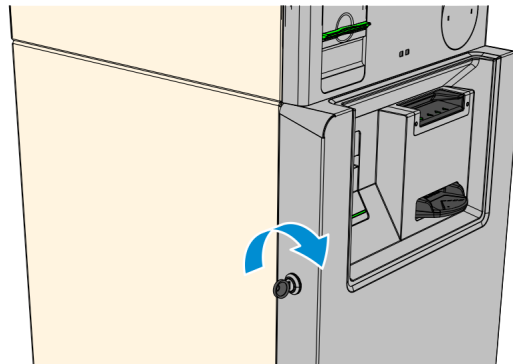
## Closing the 7705 Safe

1. Close the Safe Door and turn the Door Handle to the right (clockwise) to fasten the Safe Door Bolts.
2. Turn the safe key to the left (counterclockwise) to fasten the Key Lock Bolt and lock the safe door.
3. Remove the Operating Key.



CCP-72874

4. Close the Kiosk Front Door and turn the key toward you (clockwise when viewing the front side of the lock) to lock the front door.



CCP-72875