

# KIT INSTRUCTIONS

## Magnetic Stripe Reader

7702-K141/K142/K143  
Issue C



---

The product described in this book is a licensed product of NCR Corporation.

NCR is a registered trademark of NCR Corporation. NCR RealPOS is a trademark of NCR Corporation in the United States and/or other countries. Other product names mentioned in this publication may be trademarks or registered trademarks of their respective companies and are hereby acknowledged.

The terms HDMI and HDMI High-Definition Multimedia Interface, and the HDMI Logo are trademarks or registered trademarks of HDMI Licensing LLC in the United States and other countries.

Where creation of derivative works, modifications or copies of this NCR copyrighted documentation is permitted under the terms and conditions of an agreement you have with NCR, NCR's copyright notice must be included.

It is the policy of NCR Corporation (NCR) to improve products as new technology, components, software, and firmware become available. NCR, therefore, reserves the right to change specifications without prior notice.

All features, functions, and operations described herein may not be marketed by NCR in all parts of the world. In some instances, photographs are of equipment prototypes. Therefore, before using this document, consult with your NCR representative or NCR office for information that is applicable and current.

To maintain the quality of our publications, we need your comments on the accuracy, clarity, organization, and value of this book. Please use the link below to send your comments.

EMail: [FD230036@ncr.com](mailto:FD230036@ncr.com)

Copyright © 2014–2015

By NCR Corporation

Duluth, GA U.S.A.

All Rights Reserved

## Revision Record

| Issue | Date     | Remarks                        |
|-------|----------|--------------------------------|
| A     | Jun 2014 | First Issue                    |
| B     | May 2015 | Added JIS model                |
| C     | Jun 2015 | Added X-Series Display support |

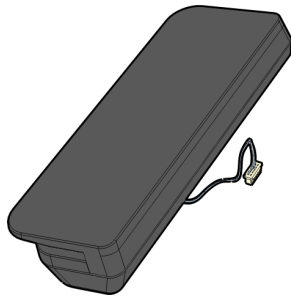
---

# Magnetic Stripe Reader

---

This kit provides an MSR for the RealPOS XR7 POS, RealPOS XR7 Plus POS, RealPOS XR5 POS, and X-Series Displays. There are three versions of the MSR but the installation procedures are the same.

- Encrypted MSR (7702-K141)
- JIS MSR (7702-K142)
- Monetra Encrypted MSR (7702-K143)



# Installation Procedure

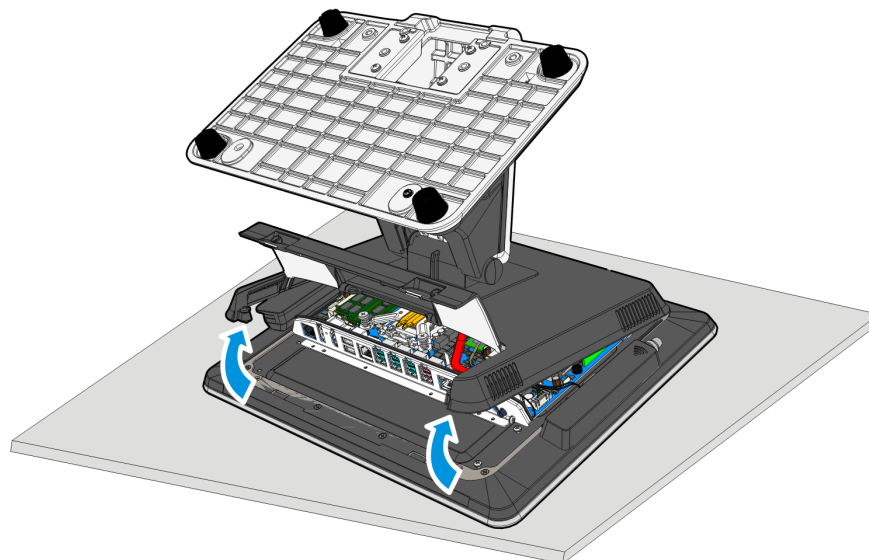
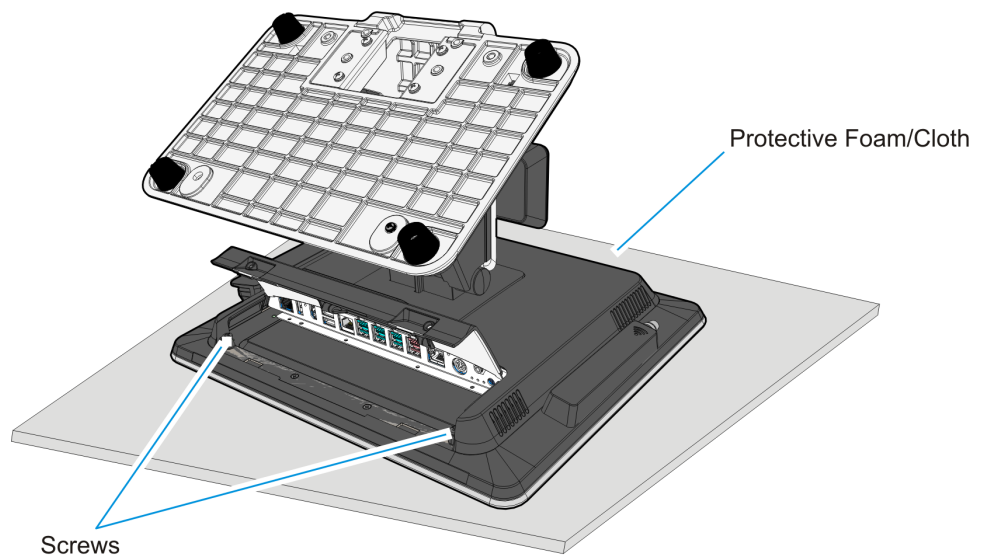
## RealPOS XR7 (7702)

1. Lay the terminal face down on a flat surface.



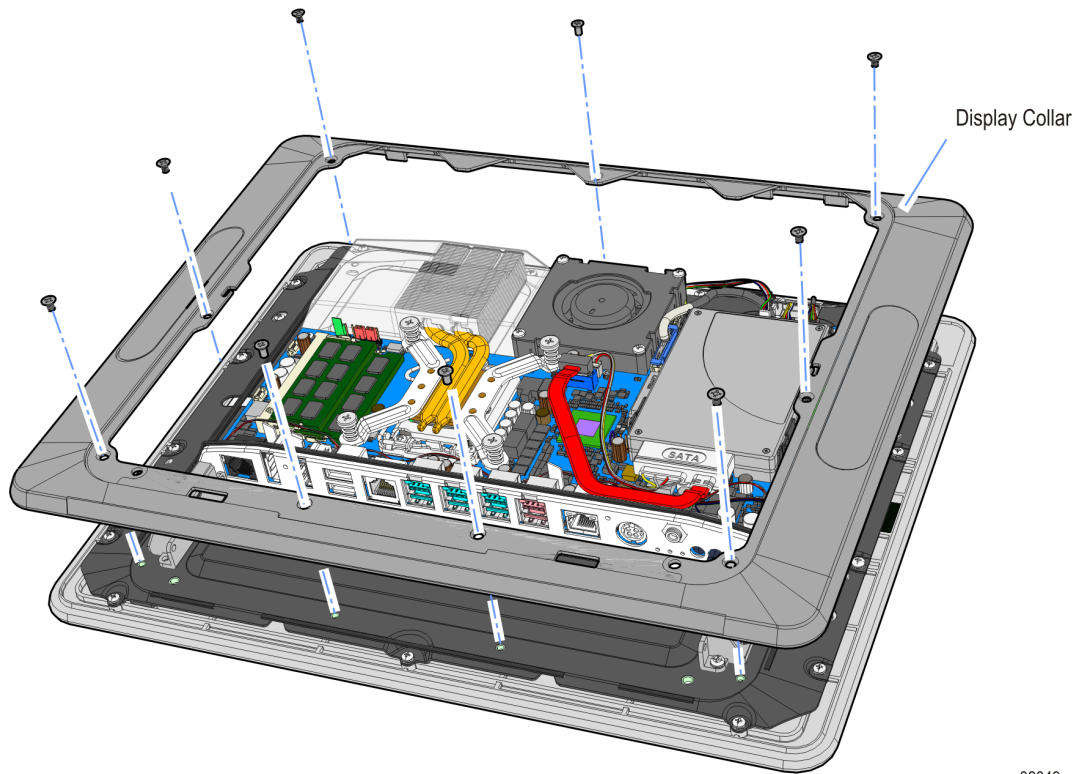
**Caution:** Always use a soft material (cloth, foam) to protect the display screen when placing the terminal face down.

2. Remove the Base Stand and Rear Cover assembly.
  - a. Loosen the captive screws (2) that secure the Rear Cover to the chassis.
  - b. Pivot the assembly as shown to remove it.





3. Remove the Display Collar (9 screws).

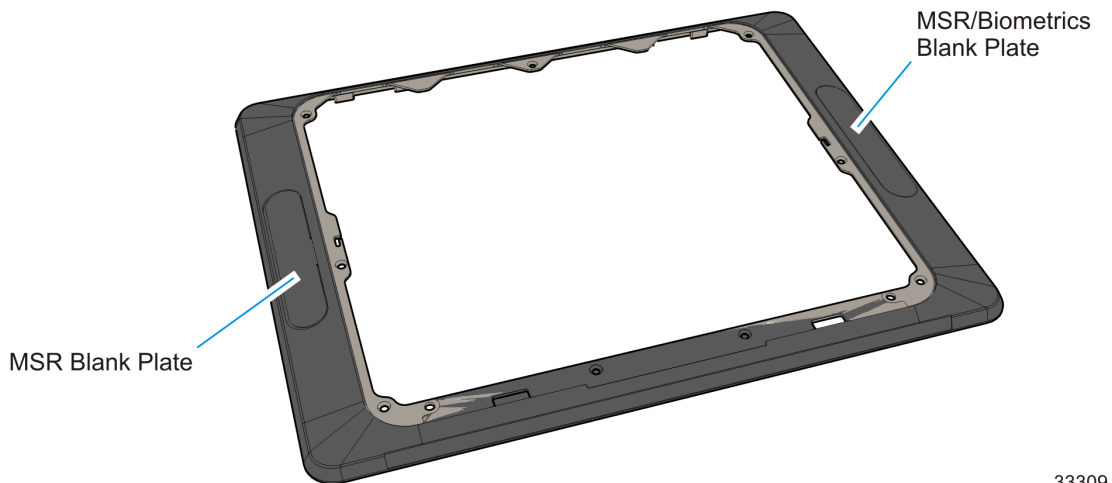


32849

4. Remove the Blank Plate from the Display Collar. The plate is connected to the Display Collar with a strong adhesive. Use care when removing it to not damage the Display Collar.

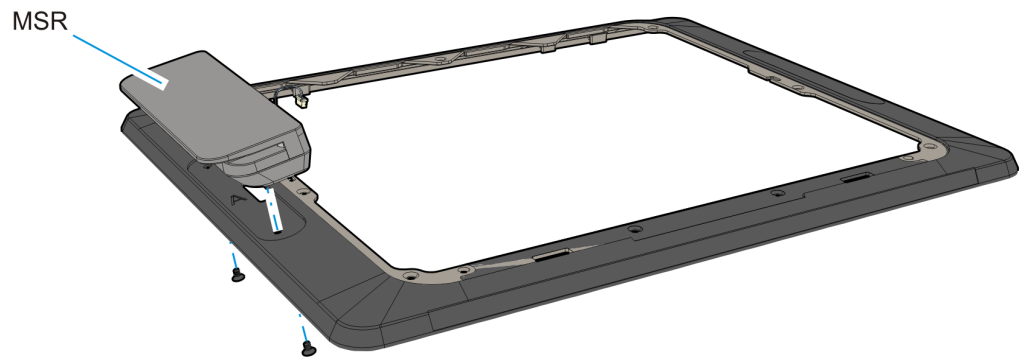


**Note:** The MSR can be mounted on either the left or right side of the display unless there is a Biometrics Reader present, which is always installed on the left side.



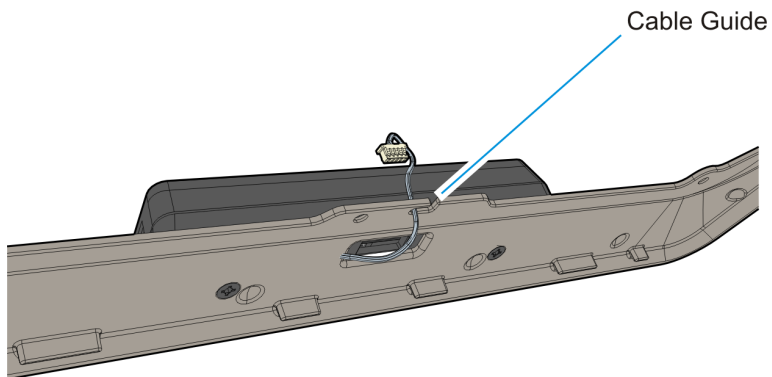
33309

5. Install the MSR module onto the Display Collar (2 screws).



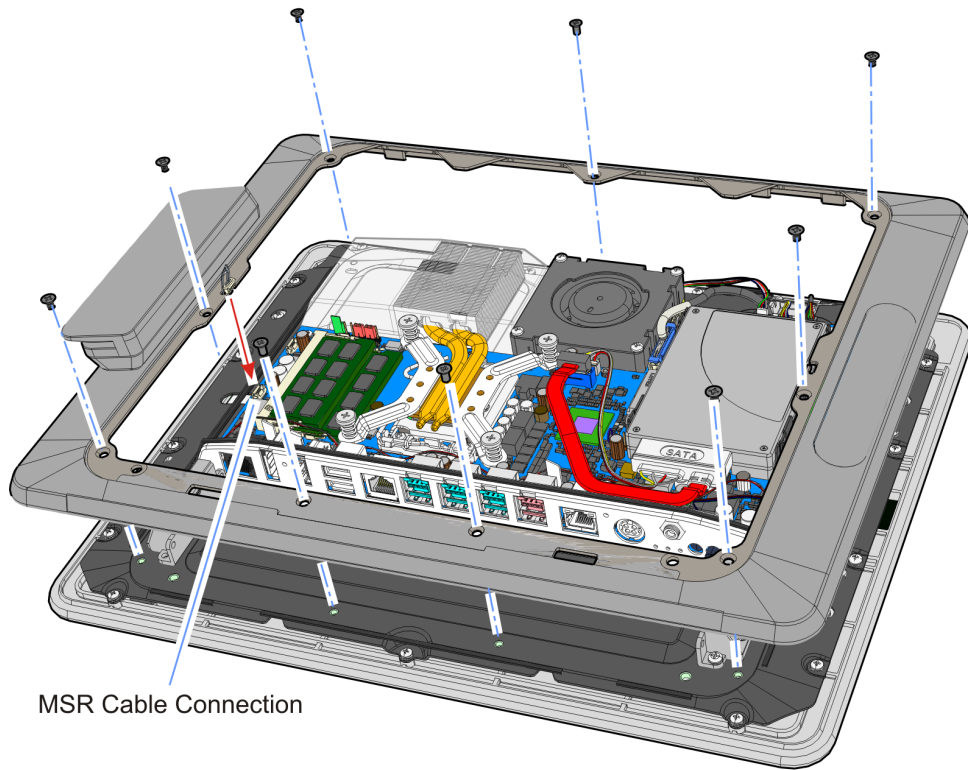
33313

6. Route the MSR Cable through the Cable Guide on the Display Collar.



33314

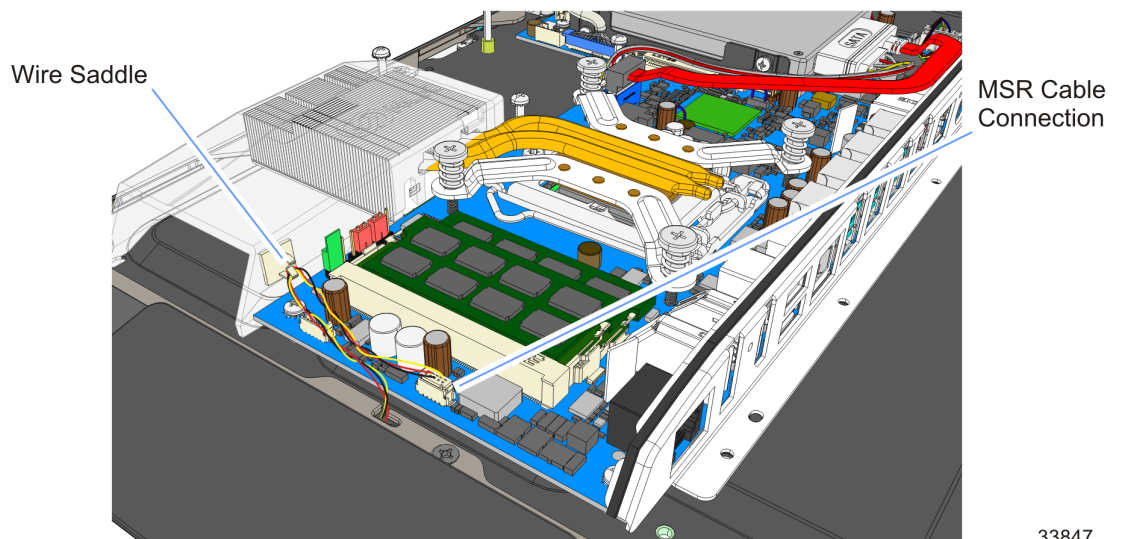
7. Install the Display Collar (9 screws).
8. Connect the MSR Cable to the Motherboard.



33311



**Note:** For 15" terminal, twist the cable two-three times and hook it through the Wire Saddle. For 18" terminals the cable does not need to hook onto the Wire Saddle.




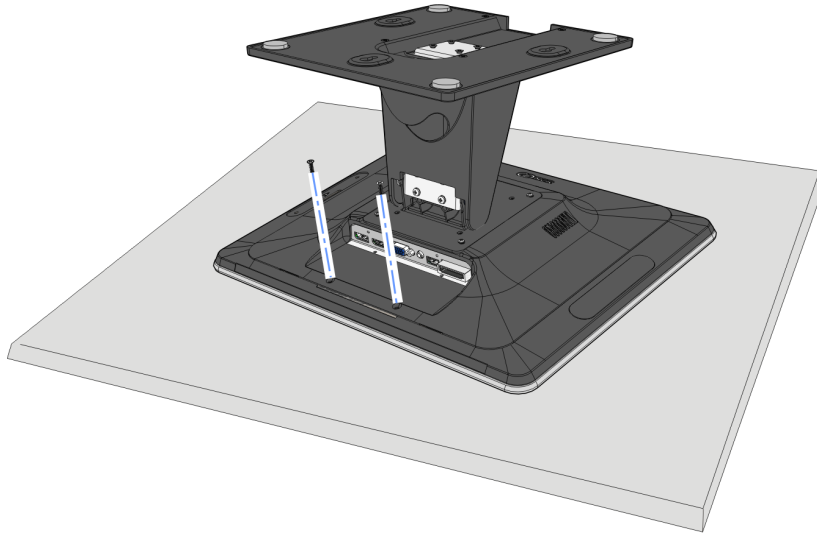
33847

9. Replace the Base Stand and Rear Cover assembly.

## X-Series Displays (15-Inch)

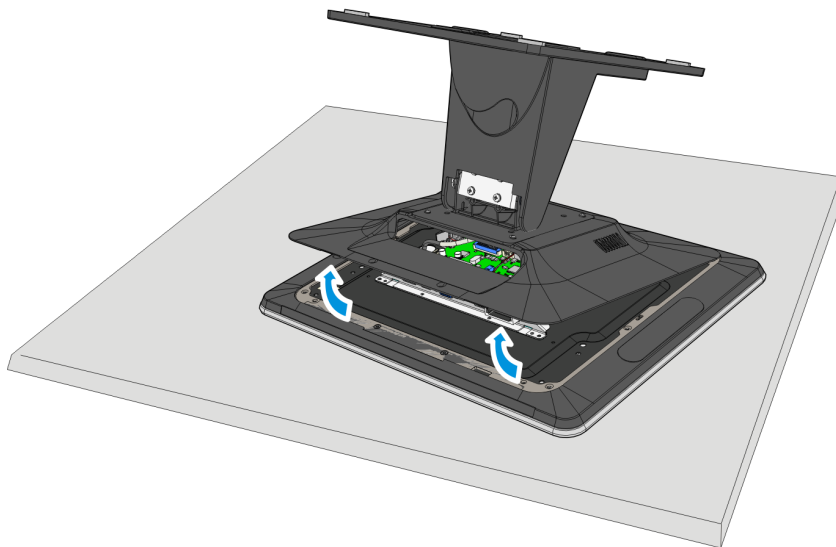
1. Remove the screws (2) that secure the Stand and Rear Cover to the display.

 **Caution:** Always use a soft material (cloth, foam) to protect the display screen when placing the terminal face down.



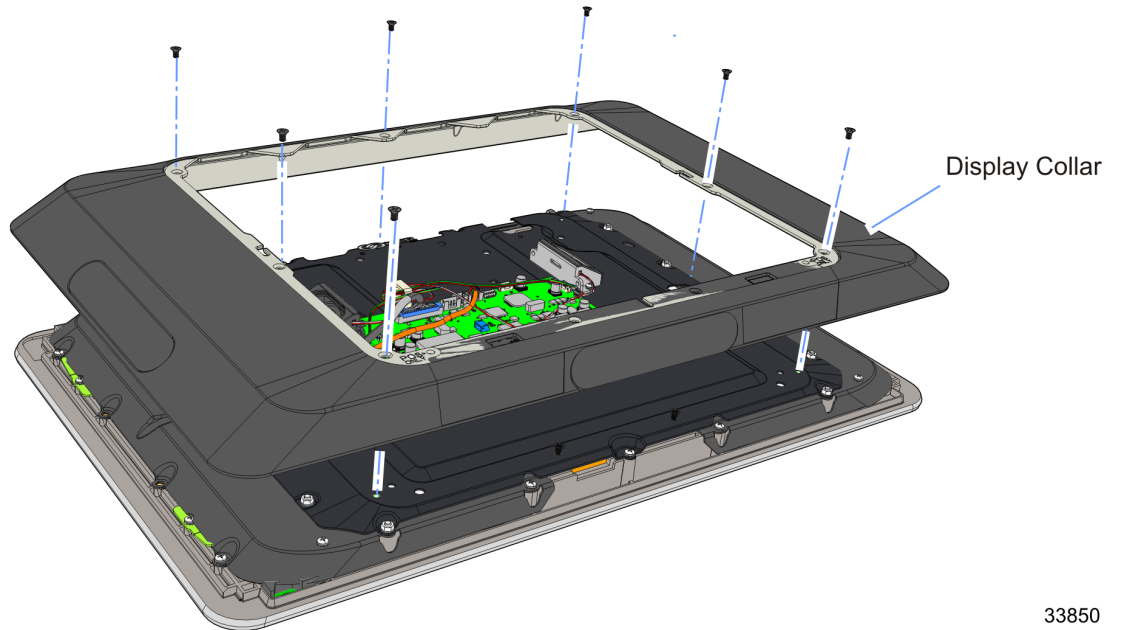
33867

2. Pivot the Stand and Rear Cover assembly as shown to remove it.



33868

3. Remove the Display Collar (7 screws).

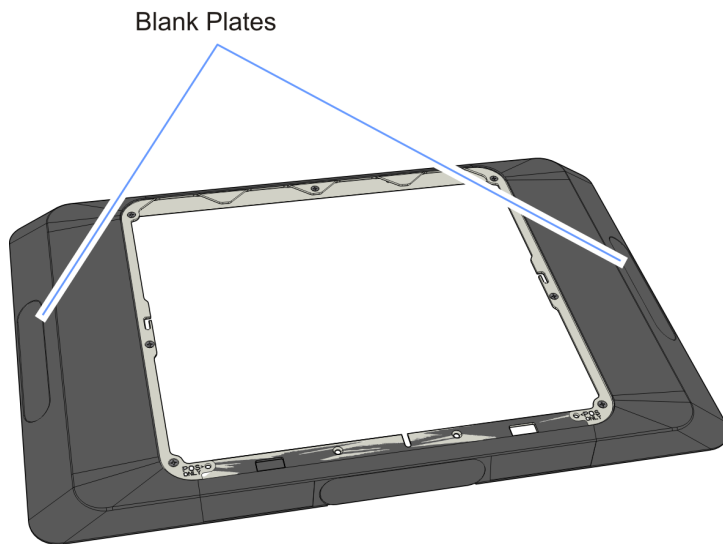


33850

4. Remove the Blank Plate from the Display Collar. The plate is connected to the Display Collar with a strong adhesive. Use care when removing it to not damage the Display Collar.

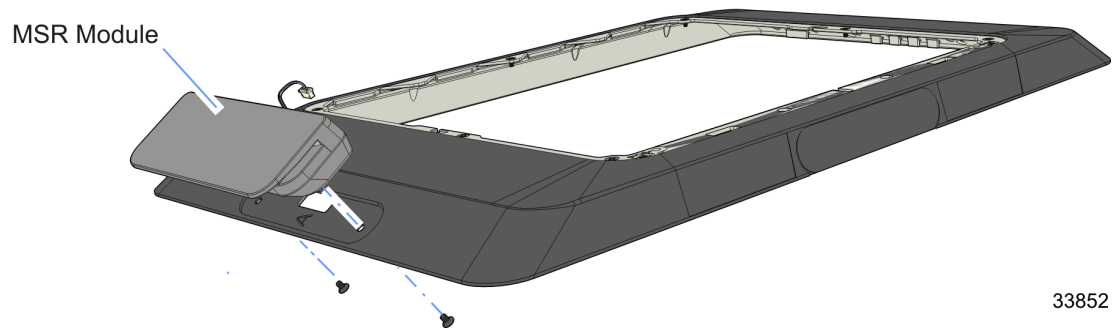


**Note:** The MSR can be mounted on either the left or right side of the display unless there is a Biometrics Reader present, which is always installed on the left side.

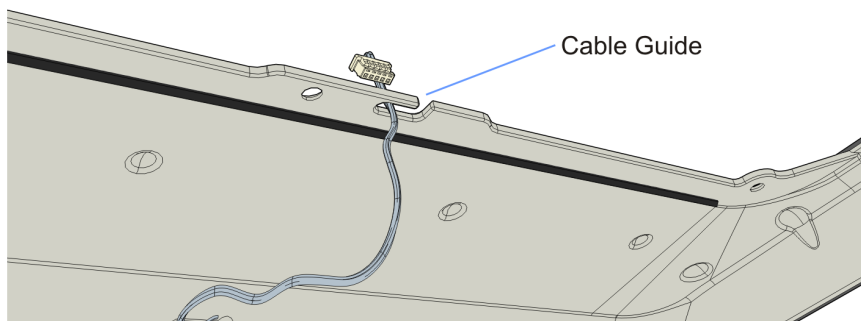


33851

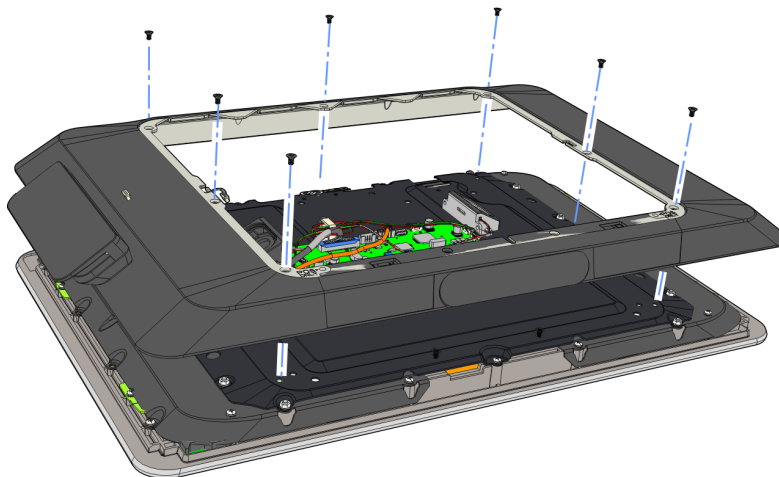
5. Install the MSR module onto the Display Collar (2 screws).



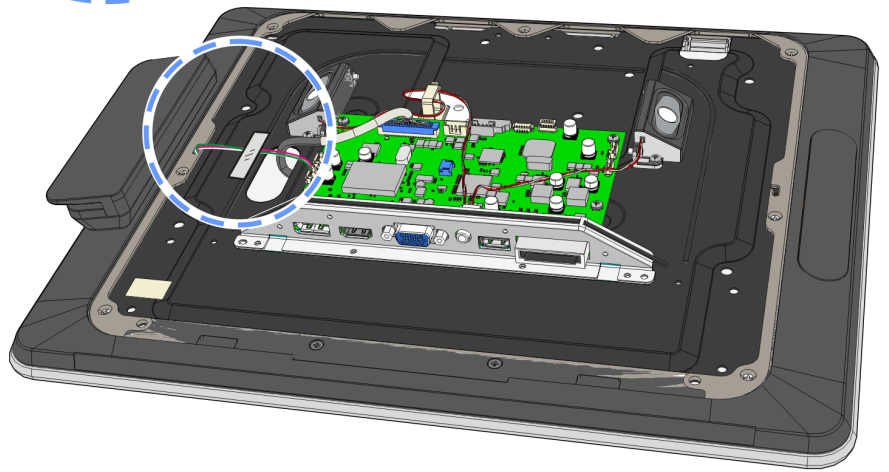
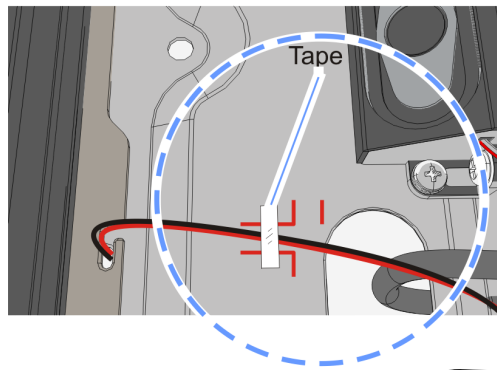
6. Route the MSR Cable through the Cable Guide on the Display Collar.



7. Install the Display Collar onto the terminal (7 screws).



8. Connect the MSR Cable to the Video Board.
9. Tape the MSR Cable to the Display Sled between the score lines as shown below. This locates the cable so it does not get pinched when the Rear Cover is installed.

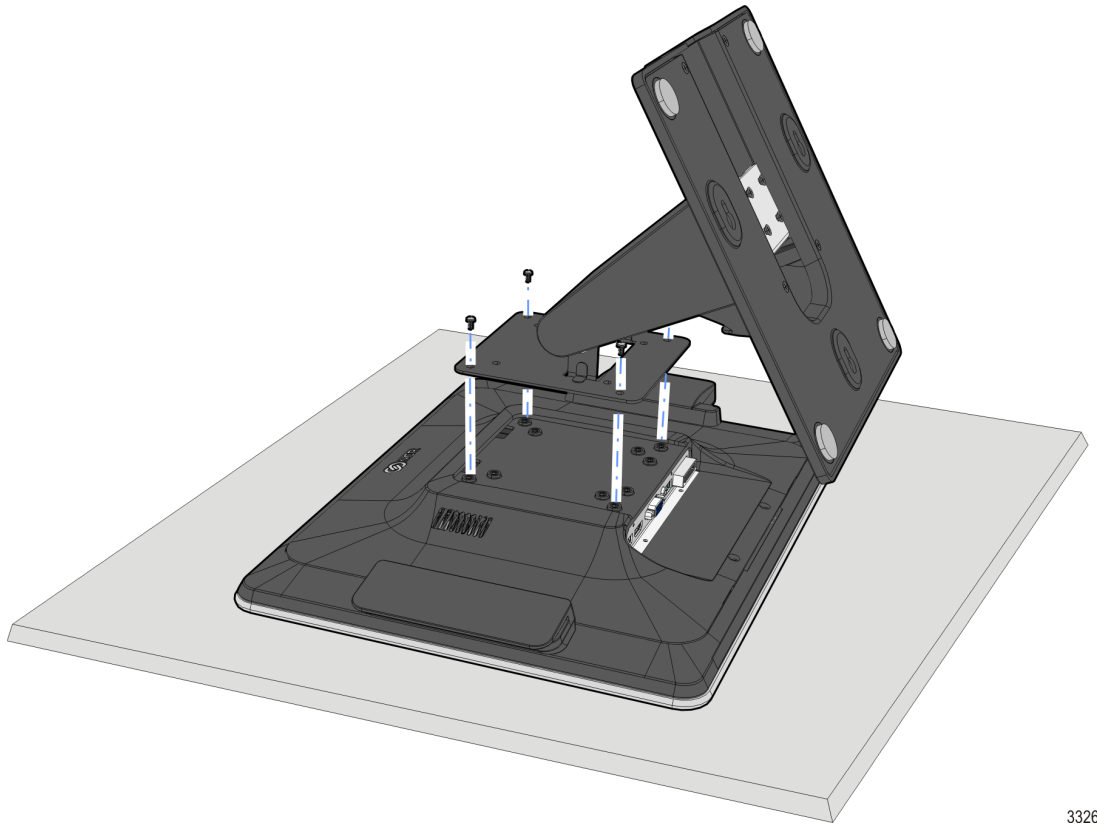


33863

10. Replace the Rear Cover.
11. Reinstall the terminal onto the Base Stand.

## X-Series 10-Inch Displays

1. Remove the screws (4) that secure the Mount to the display.

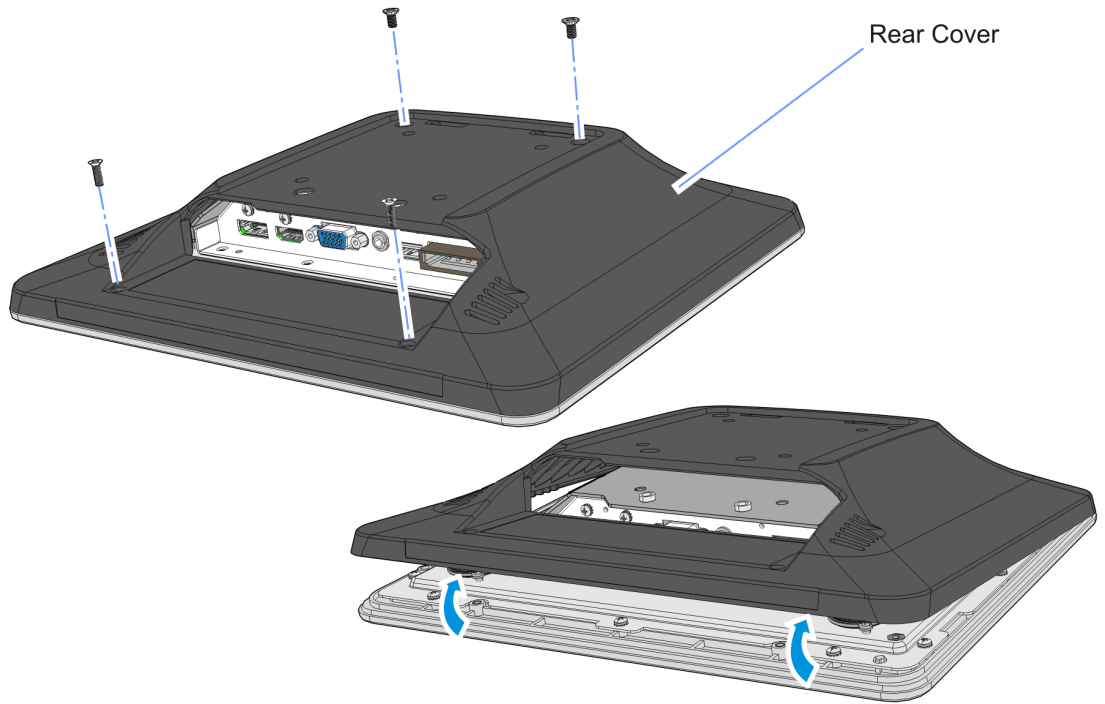


33262

2. Remove the Rear Cover screws (4).

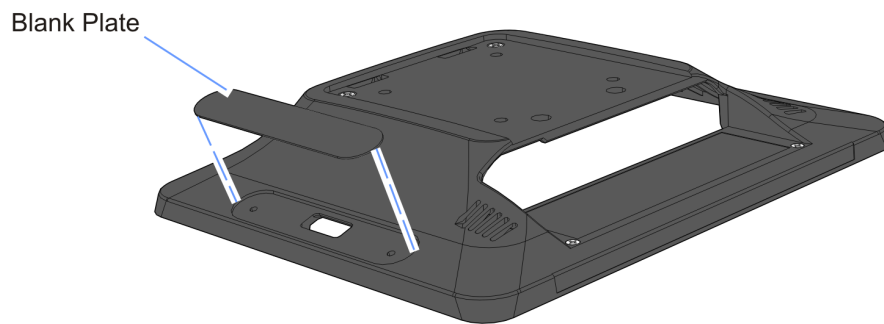


3. Pivot the Rear Cover as shown to remove it.



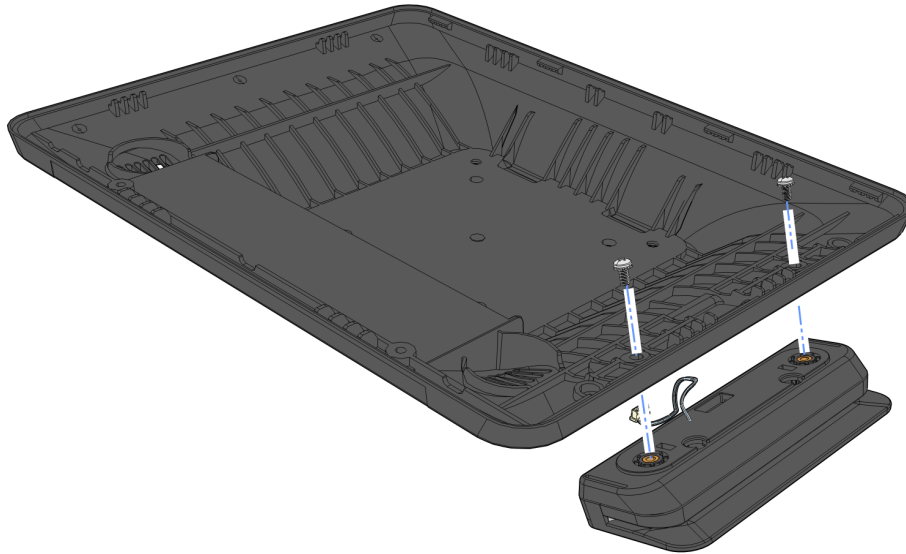
33865

4. Remove the Blank Plate from the Display Collar. The plate is connected to the Rear Cover with a strong adhesive. Use care when removing it to not damage the Display Collar.



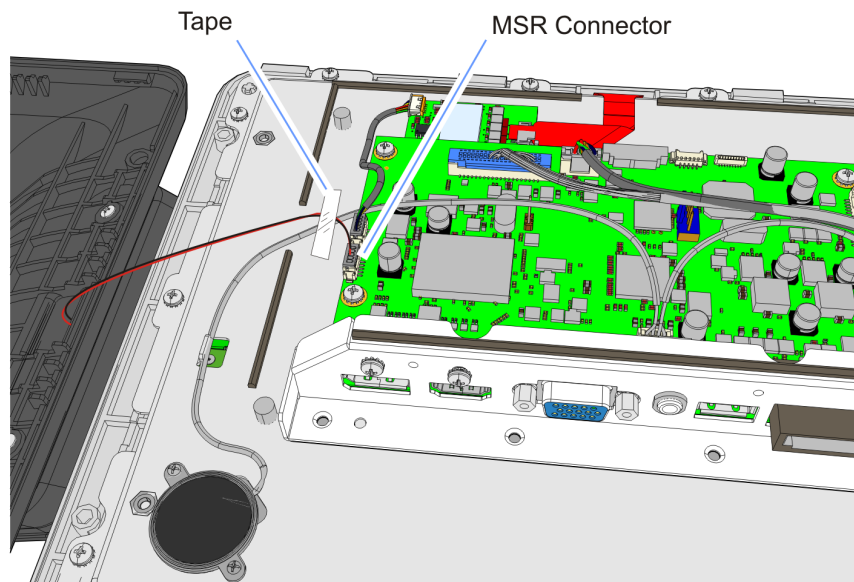
33864

5. Install the MSR on the Rear Cover (2 screws).



33861

6. Connect the MSR Cable to the Video Board.
7. Secure the MSR cable to the Display Sled with tape as shown (between the gaskets).



33860

8. Reinstall the Rear Cover (4 screws).
9. Reinstall the Stand.

## MSR Programming

If the MSR Module is replaced the customer is responsible for re-programming the device to custom wedge-emulation parameters.

There are two types of MSR heads available for the X-Series Displays.

- NCR Encrypted MSR (7702-K141) — Software interfaces: OPOS, Serial, NCR API or Keyboard Wedge



**Note:** If you need assistance with Keyboard Wedge configuration please send an email request from the following location:

[http://www5.ncr.com/support/support\\_drivers\\_patches.asp?Class=External/Terminals\7702XR7\display](http://www5.ncr.com/support/support_drivers_patches.asp?Class=External/Terminals\7702XR7\display)

Click the  icon under NCR RealPOS XR7 ( 7702-xxxx )

- Monetra Encrypted MSR (7702-K143) — Software interfaces: OPOS or NCR API

