

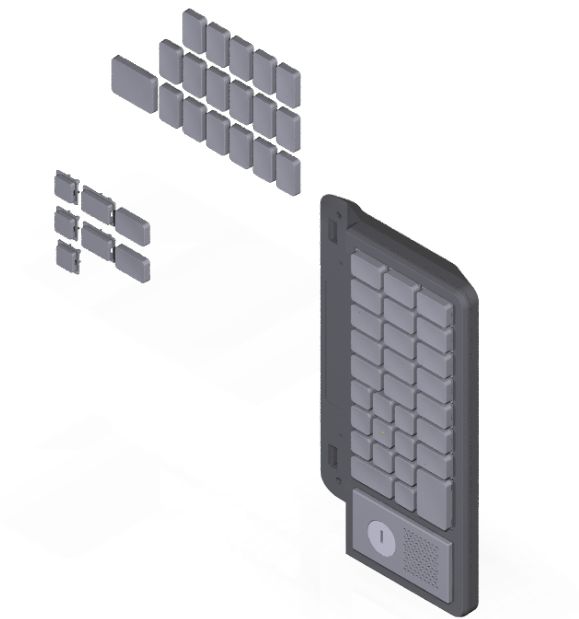


# NCR Voyix 9700

Enhanced Keypad with No MSR  
Filler Plate, Keylock (Black)

---

**9700-0064-5915**



BCC5-0000-5793

Issue C

# Copyright and Trademark Information

---

The product described in this document is a licensed product of NCR Voyix Corporation.

NCR Voyix Configurable Assemblies is a trademark of NCR Voyix Corporation in the United States and/or other countries. Other product names mentioned in this publication may be trademarks or registered trademarks of their respective companies and are hereby acknowledged.

Where creation of derivative works, modifications or copies of this NCR Voyix copyrighted documentation is permitted under the terms and conditions of an agreement you have with NCR Voyix, NCR Voyix's copyright notice must be included.

Disclaimer:

It is the policy of NCR Voyix Corporation to improve products as technology, components, software and firmware become available. NCR Voyix therefore reserves the right to change specifications without prior notice.

All features, functions and operations described herein may not be marketed by NCR Voyix in all parts of the world. In some instances, photographs are of equipment prototypes.

Therefore, before using this document, consult with your NCR Voyix representative or NCR Voyix office for information that is applicable and current.

© 2019–2025

By NCR Voyix Corporation

Atlanta, Georgia, USA

All Rights Reserved

# Preface

---

## Audience

This publication is written for hardware installer/service personnel, system integrators, and field engineers.



### Note

This document is NCR Voyix proprietary information and is not to be disclosed or reproduced without consent.

# Table of Contents

---

**9700-0064-5915 Enhanced Keypad with No MSR Filler Plate, Keylock (Black) ..... 6**

    Installation Procedure ..... 7

        Installing a Key Tip ..... 9

        Removing a Key Tip ..... 10

        Installing a Key Lens ..... 11

        Removing a Key Lens ..... 11

        Installing the Enhanced Keypad MSR ..... 12

        Installing the Enhanced Keypad JIS MSR ..... 16

    Keypad Driver ..... 21

    Keypad Remap Utility ..... 21

# Revision Record

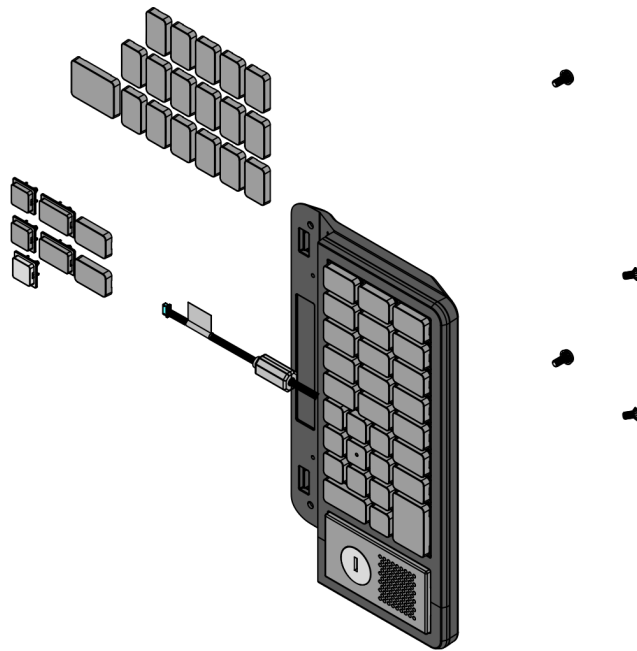
---

Publication issue	Date	Description of change
A	Oct 2019	First issue
B	Apr 2021	Added installation procedures for MSR and JIS MSR.
C	Jul 2025	<ul style="list-style-type: none"><li>• Updated to NCR Voyix brand.</li><li>• Added IP book number.</li></ul>

# 9700-0064-5915 Enhanced Keypad with No MSR Filler Plate, Keylock (Black)

---

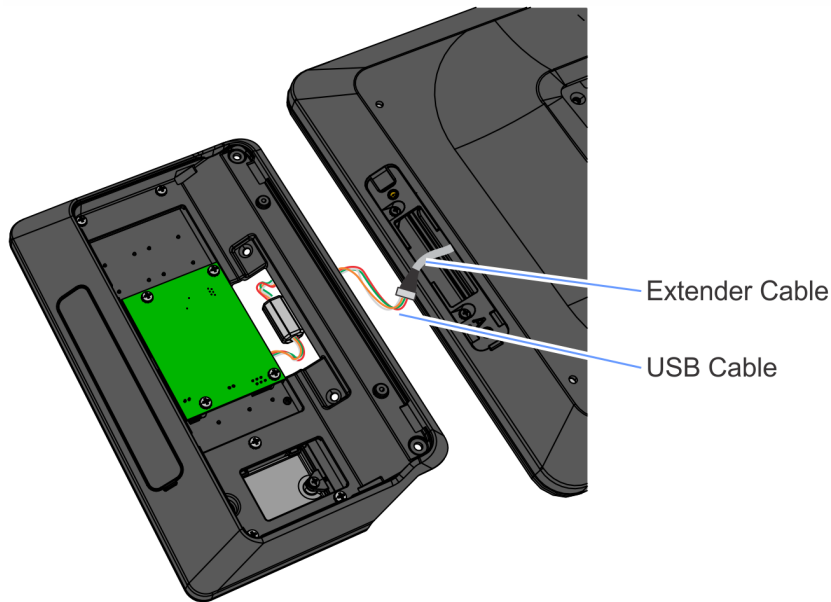
This provides an Enhanced Keypad (with No MSR Filler Plate and Keylock) for the XL15 Display (5915).



CCP-77074

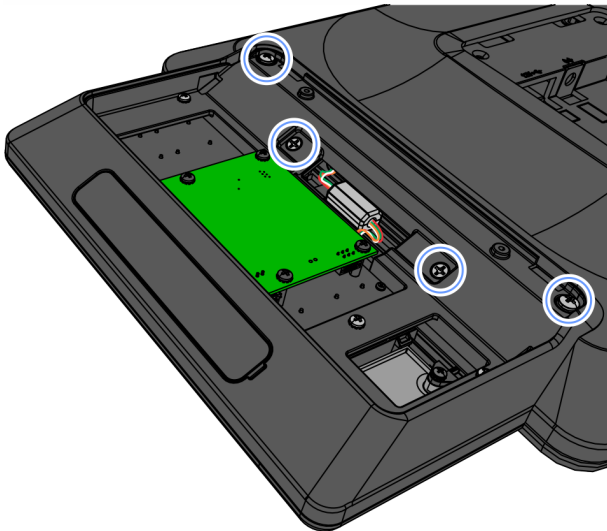
# Installation Procedure

1. Connect the USB cable to the extender cable.



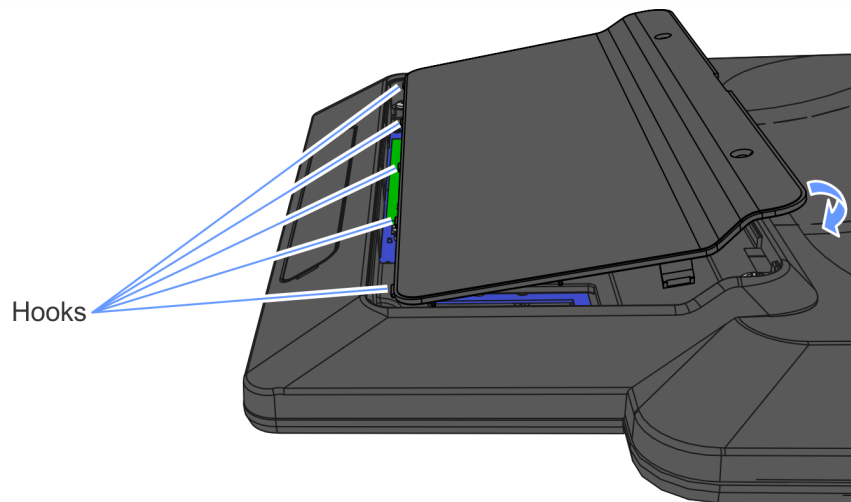
CCP-77037

2. Install the Enhanced Keypad on the Display (4 screws).



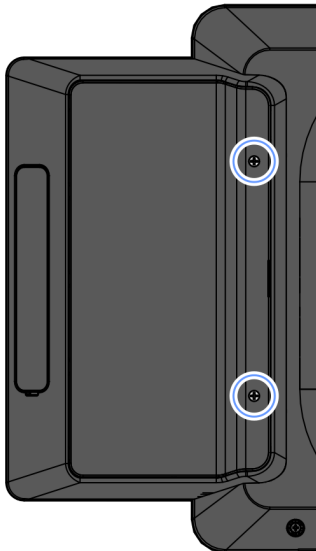
CCP-77036

3. Hook the Rear Cover to the Enhanced Keypad and snap into place.



CCP-77035

4. Secure the Rear Cover with two (2) screws.



CCP-77033



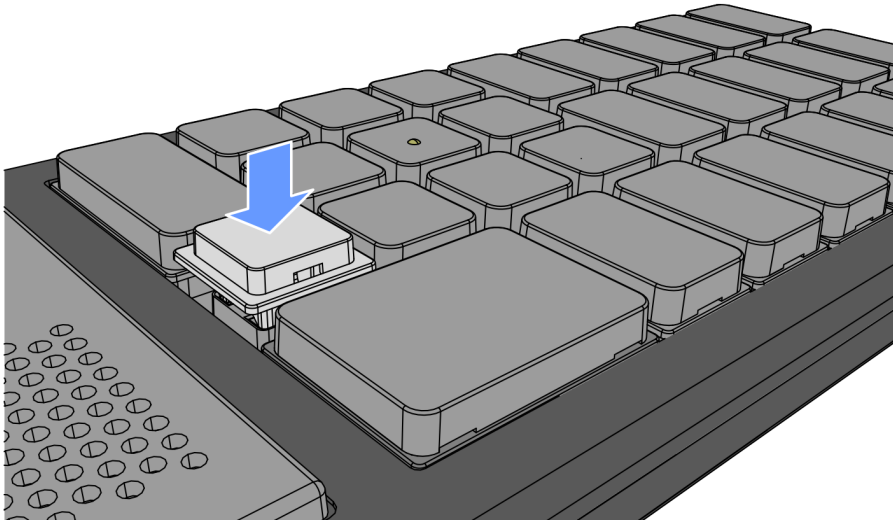
# Installing a Key Tip

Place the Key Tip over its position on the keyboard and press the key until it snaps into place.



## Note

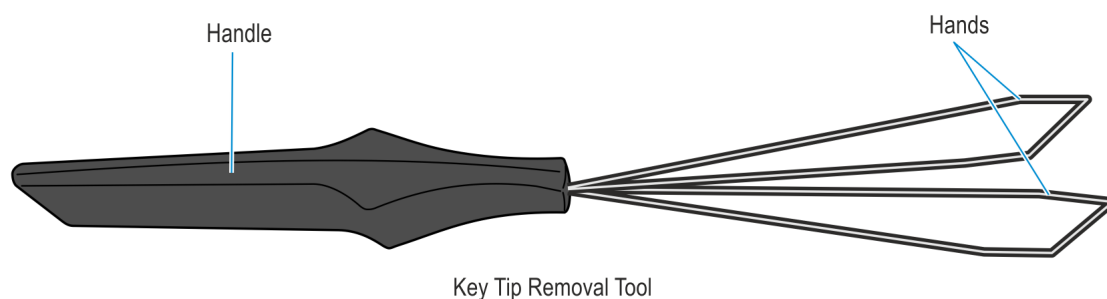
For 1x1 Key Tips, the indentations must always be on the left and right sides.



CCP-77052

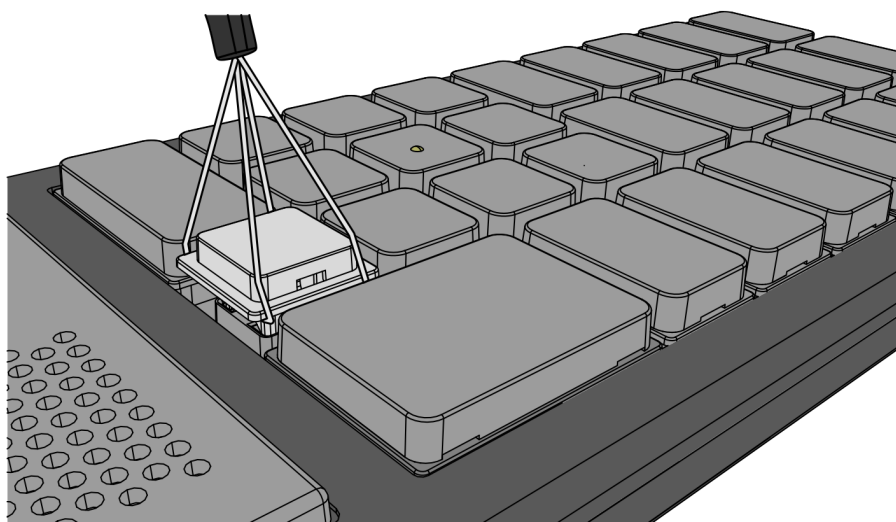
# Removing a Key Tip

Use a Key Removal Tool to remove a Key Tip from the keyboard.



CCP-73158

Insert the hands of the removal tool under each side of the Key Tip and carefully pull the tool upward until the Key Tip pops off its retainer clips.



CCP-77053

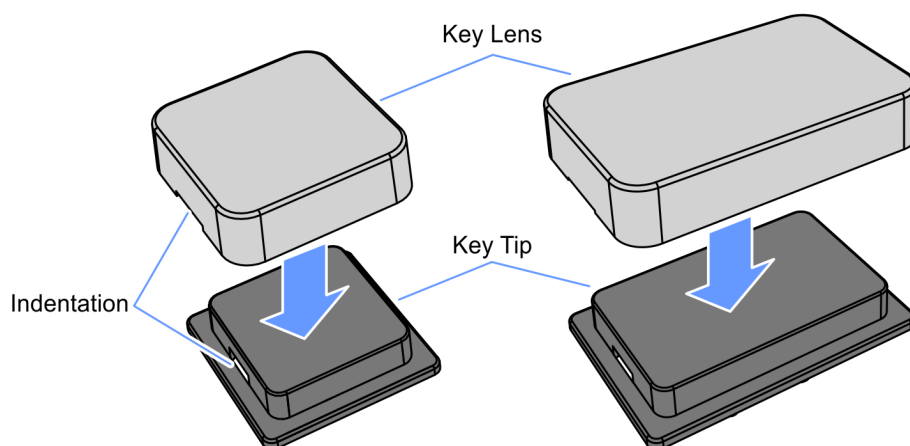
# Installing a Key Lens

Position the Key Lens over the Key Tip and then gently press the lens until it snaps and locks into place.



## Note

The snaps on the lens must be aligned with the indentations on the Key Tip.



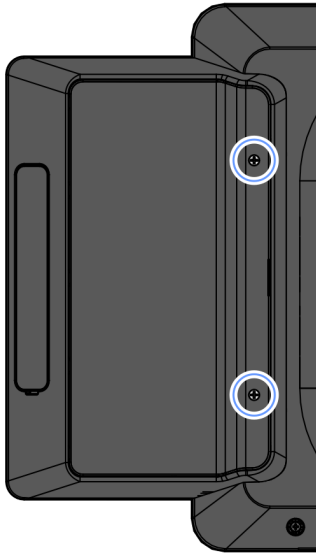
CCP-77051

# Removing a Key Lens

To remove a Key Lens, slide any thin object under the corner of the Key Lens and gently pop it off the Key Tip.

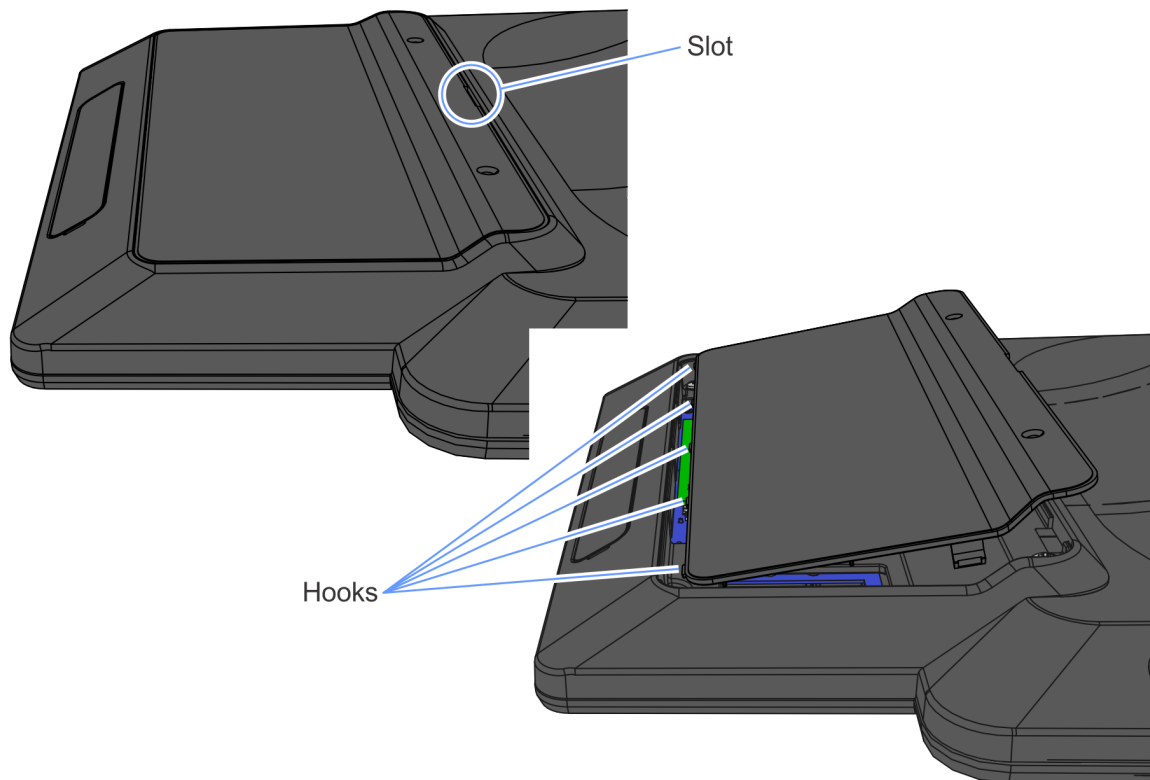
# Installing the Enhanced Keypad MSR

1. Remove the two (2) screws securing the Rear Cover to the Enhanced Keypad.



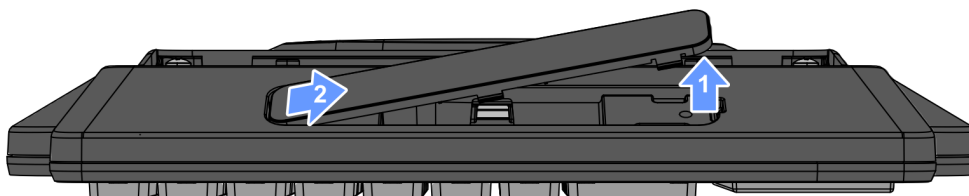
CCP-77033

2. Insert a flat screw driver in the slot to unsnap the Rear Cover, then unhook the Rear Cover from the Keypad housing.



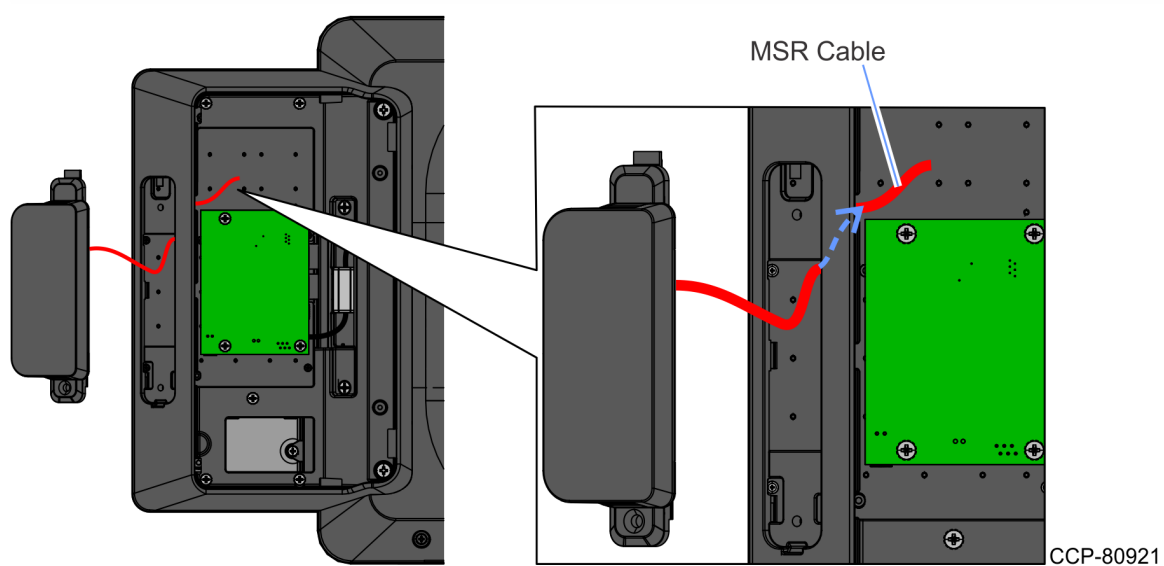
CCP-77034

3. Use a screw driver to unlatch the recessed side of the Filler Plate and then slightly pull the Filler Plate to unhook from the Enhanced Keypad.

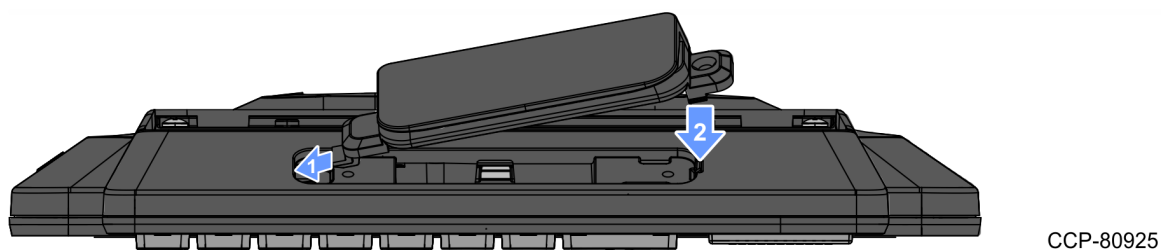


CCP-80910

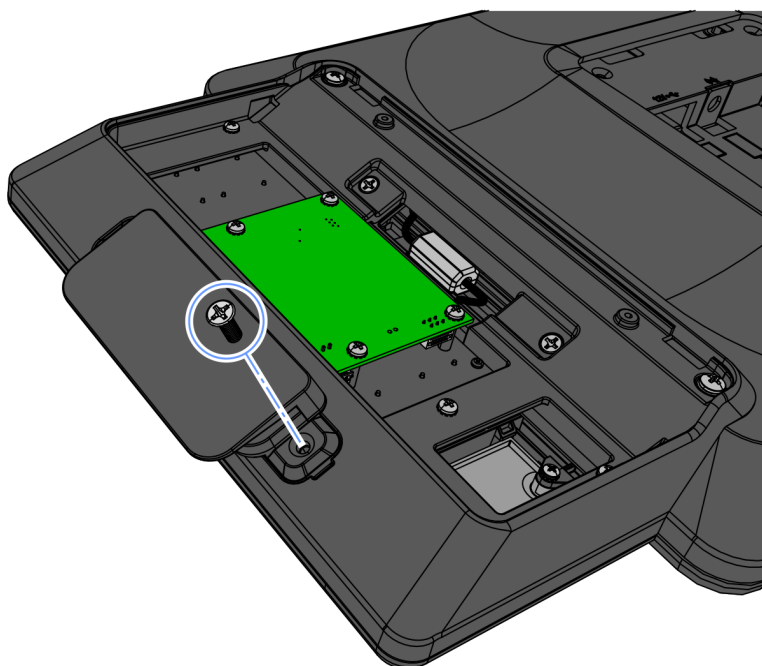
4. Route the MSR Cable through the opening as shown.



5. Insert the hook of the MSR into the rectangular hole on the Enhanced Keypad and press the other end to mount the MSR. Make sure the cable does not get pinched.

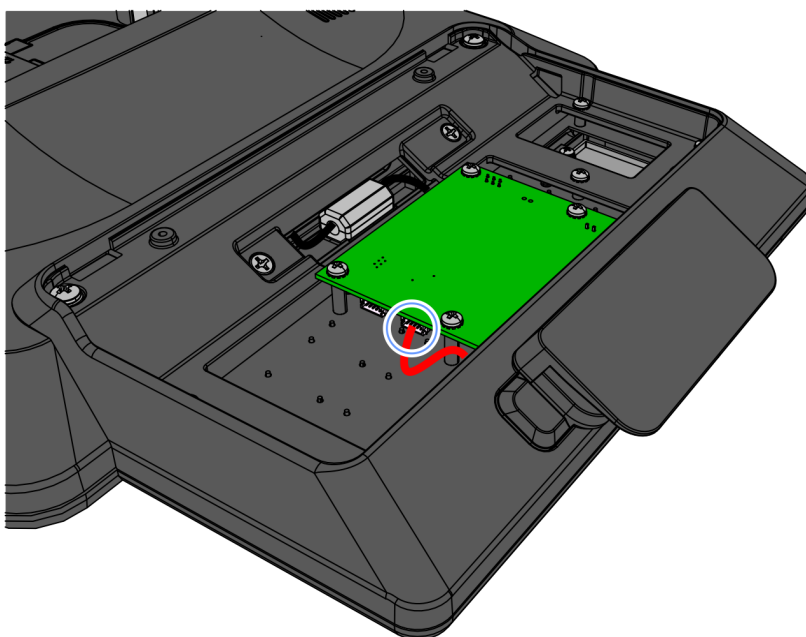


6. Secure the MSR to the Enhanced Keypad with a screw.



CCP-80923

7. Connect the MSR Cable to the PCBA.

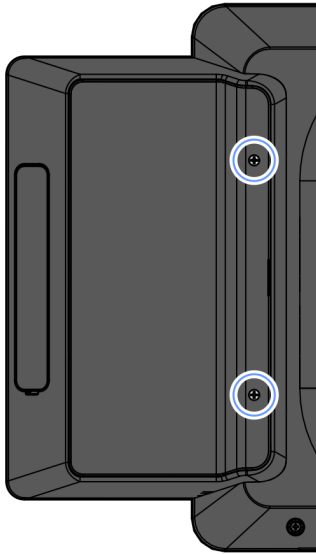


CCP-80922

8. Reinstall the Rear Cover of the Enhanced Keypad securing it in place with the two (2) screws removed in step 1.

# Installing the Enhanced Keypad JIS MSR

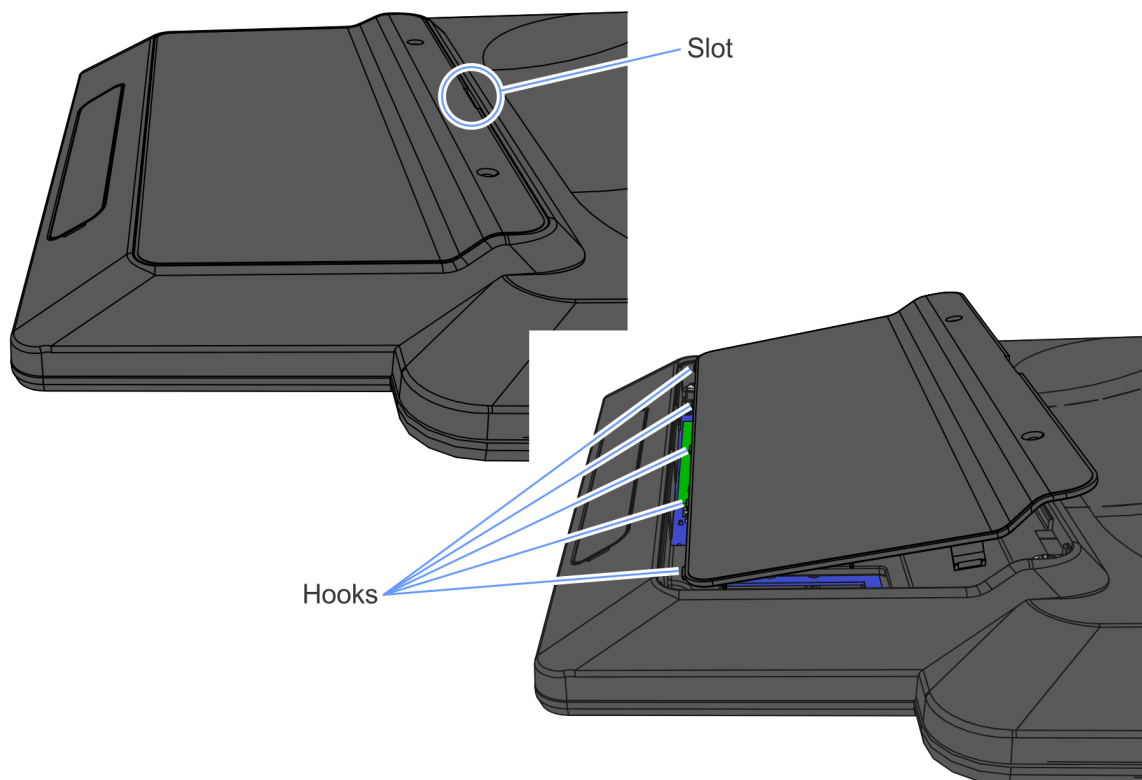
1. Remove the two (2) screws securing the Rear Cover to the Enhanced Keypad.



CCP-77033

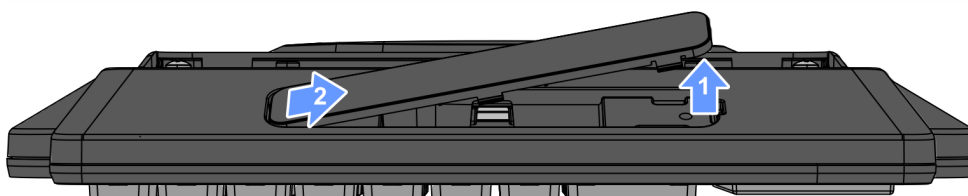


2. Insert a flat screw driver in the slot to unsnap the Rear Cover, then unhook the Rear Cover from the Keypad housing.



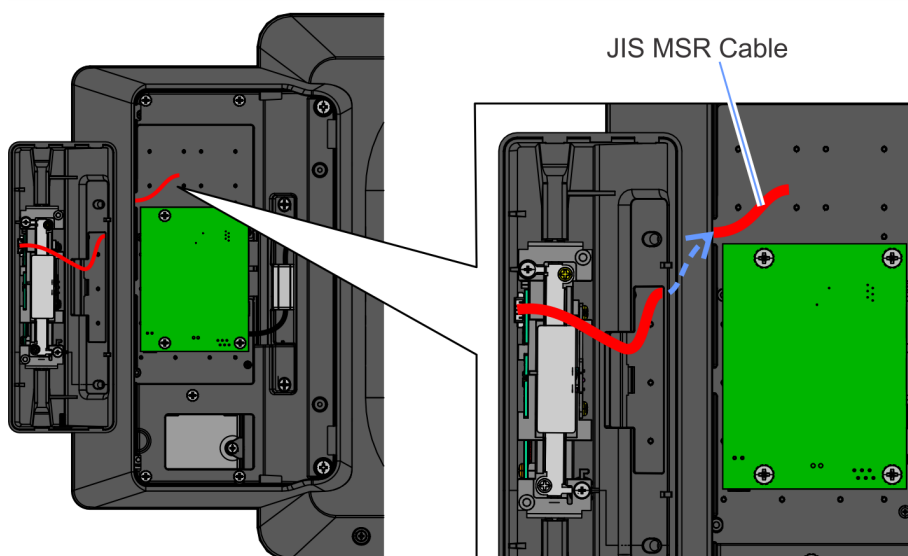
CCP-77034

3. Use a screw driver to unlatch the recessed side of the Filler Plate and then slightly pull the Filler Plate to unhook from the Enhanced Keypad.



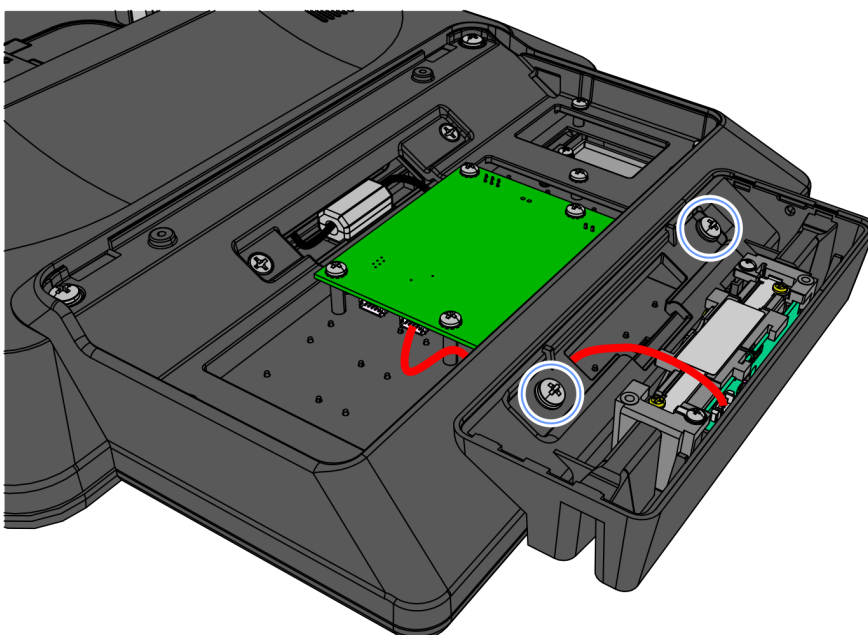
CCP-80910

4. Route the JIS MSR Cable through the opening as shown.



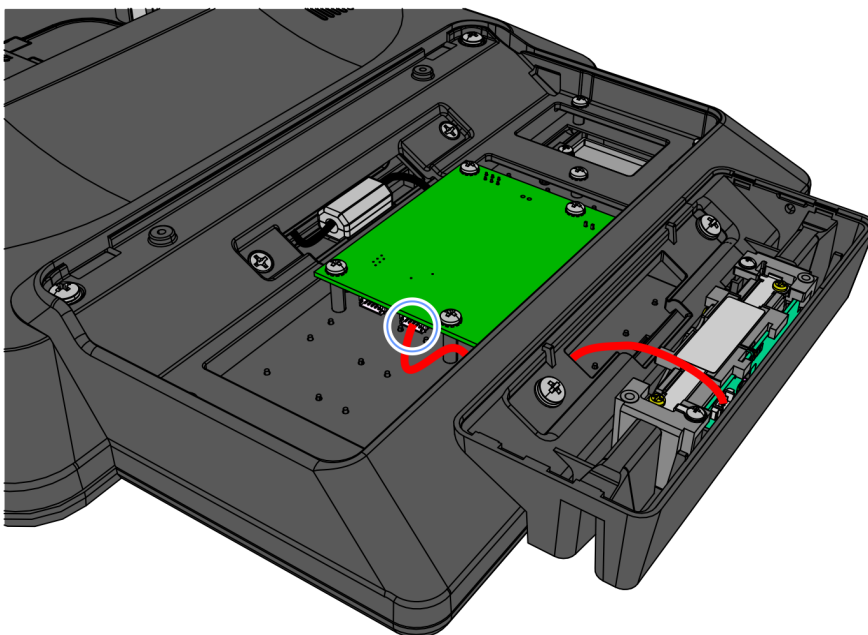
CCP-80920

5. Install the JIS MSR Front Cabinet on the Enhanced Keypad (2 screws).



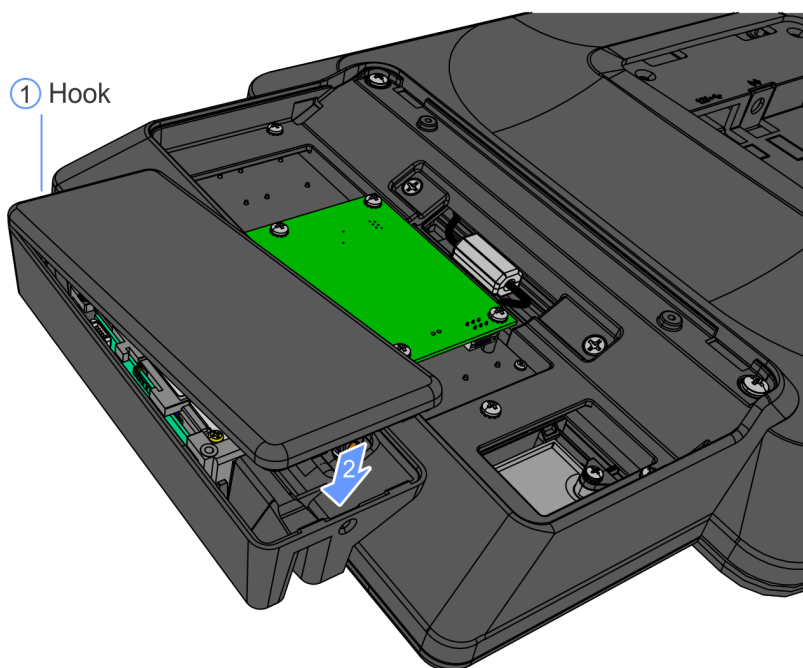
CCP-80915

6. Connect the JIS MSR Cable to the PCBA.



CCP-80914

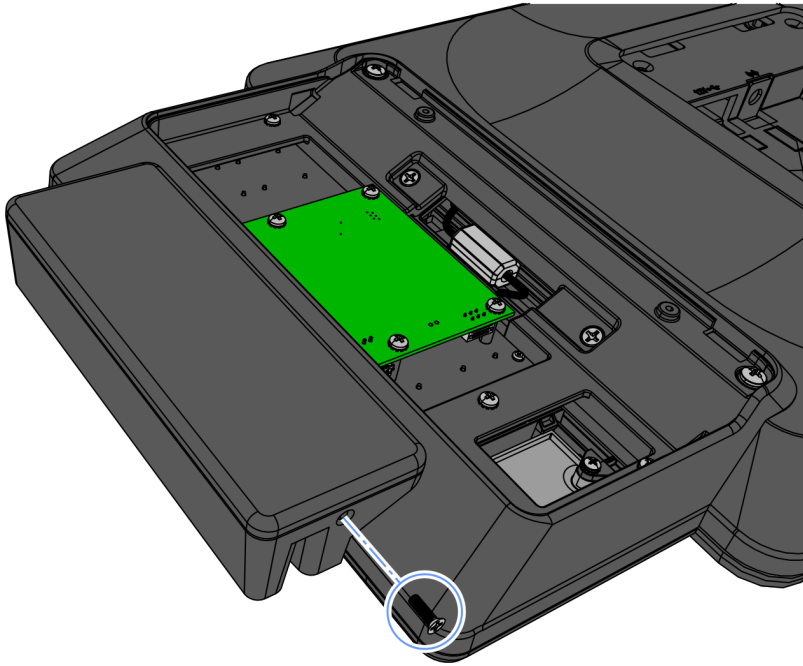
7. Hook the JIS MSR Rear Cabinet into the Front Cabinet and pivot to close.



CCP-80913

Confidential and proprietary information of NCR Voyix.  
Use and disclose solely pursuant to company instructions.

8. Secure with a screw.



CCP-80911

9. Reinstall the Rear Cover of the Enhanced Keypad securing it in place with the two (2) screws removed in step 1.

# Keypad Driver

The NCR USB Utilities package for the Enhanced Keypad module is located in the following location:

[http://www5.ncr.com/support/support\\_drivers\\_patches.asp?Class=External/Peripherals\Display\5915\display](http://www5.ncr.com/support/support_drivers_patches.asp?Class=External/Peripherals\Display\5915\display)

Refer to the Readme document for the driver installation instructions.

# Keypad Remap Utility

The NCR POS Keyboard Remap Utility provides a graphical user interface for keyboard remapping for the following:

- 5932 Keyboards
- 5953 Dynakeys
- 5954 Dynakeys
- X-Series Dynakeys
- Enhanced Keypads

The utility is located in the following location:

[http://www5.ncr.com/support/support\\_drivers\\_patches.asp?Class=External/NCRKeyboard\Remap\display](http://www5.ncr.com/support/support_drivers_patches.asp?Class=External/NCRKeyboard\Remap\display)

Refer to the Readme document for the utility installation procedure.