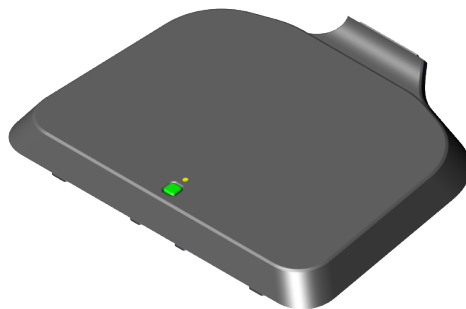




NCR Voyix 9700

7746 Battery Assembly (Orderman)

9700-0061-7746



BCC5-0000-5788

Issue B

Copyright and Trademark Information

The product described in this document is a licensed product of NCR Voyix Corporation.

NCR Voyix Configurable Assemblies is a trademark of NCR Voyix Corporation in the United States and/or other countries. Other product names mentioned in this publication may be trademarks or registered trademarks of their respective companies and are hereby acknowledged.

Where creation of derivative works, modifications or copies of this NCR Voyix copyrighted documentation is permitted under the terms and conditions of an agreement you have with NCR Voyix, NCR Voyix's copyright notice must be included.

Disclaimer:

It is the policy of NCR Voyix Corporation to improve products as technology, components, software and firmware become available. NCR Voyix therefore reserves the right to change specifications without prior notice.

All features, functions and operations described herein may not be marketed by NCR Voyix in all parts of the world. In some instances, photographs are of equipment prototypes.

Therefore, before using this document, consult with your NCR Voyix representative or NCR Voyix office for information that is applicable and current.

© 2019–2025

By NCR Voyix Corporation

Atlanta, Georgia, USA

All Rights Reserved

Preface

Audience

This publication is written for hardware installer/service personnel, system integrators, and field engineers.



Note

This document is NCR Voyix proprietary information and is not to be disclosed or reproduced without consent.

Table of Contents

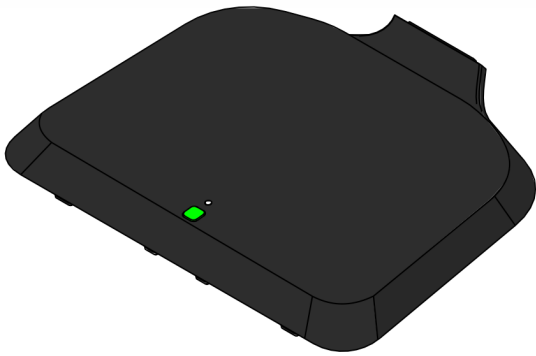
9700-0061-7746 7746 Battery Assembly (Orderman)	6
Battery Driver	7
Installation Procedure	9
System States	14
When the unit is connected to AC Power	14
When the unit is running on Battery Power only	16
When the Customer Display is connected to USB-C port	17

Revision Record

Publication issue	Date	Description of change
A	May 2019	First issue
B	Jul 2025	<ul style="list-style-type: none">• Updated to NCR Voyix brand.• Added IP book number.

9700-0061-7746 7746 Battery Assembly (Orderman)

This kit provides a stand top cover with battery for the NCR PX10/PX15 POS (7746).



CCP-75471



Note

The Battery comes attached to the Top Cover.

Battery Driver

Windows OS

1. Ensure you have the latest Windows BIOS from NCR.com. You must have version 1.0.9.1 or higher for proper battery operation. For more information, refer to the BIOS Updating Procedure chapter in NCR PX10/PX15 POS (7746) User Guide.
2. Ensure you have the latest Windows PX10 battery driver package from NCR.com:
http://www5.ncr.com/support/support_drivers_patches_radiant.asp?Class=Hospitality/PX10_recent_display.
3. For proper battery operation, you must have battery driver package v1.0.1.0 or higher.
4. Install the battery.
5. Re-start the unit. The unit must be rebooted before the battery will work.

Android OS

1. Ensure you have the latest Android BIOS from NCR.com. You must have version 2.0.9.1 or higher for proper battery operation. For more information, refer to the BIOS Updating Procedure chapter in in NCR PX10/PX15 POS (7746) User Guide.
2. Work with your NCR Account Manager or Professional Services Partner to ensure you have the latest NCR Android operating system image integrated into your system. Battery drivers are built into the NCR Android image. For proper battery operation, you must have NCR Android image v1.6.0 or higher (engineering ROM530441/497-0523921 or user ROM530442/497-0523922).
3. Install the battery.
4. Re-start the unit. The unit must be rebooted before the battery will work.

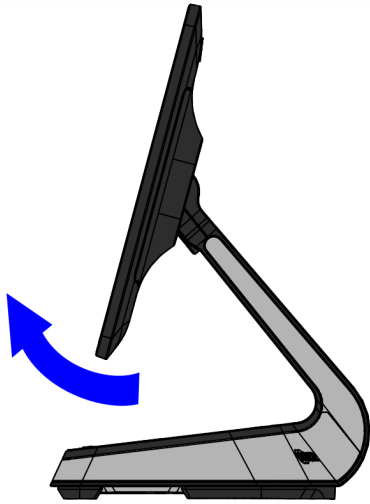


Note

Windows and Android BIOS images are different. Windows BIOS versions start with a "1" (1.x.x.x), while Android BIOS versions start with a "2" (2.x.x.x). Failure to use the appropriate BIOS image will result in unreliable operation.

Installation Procedure

1. Pivot the display toward the back.



CCP-73935

2. Remove the screw (1) that secures the Front Neck Cover to the neck.



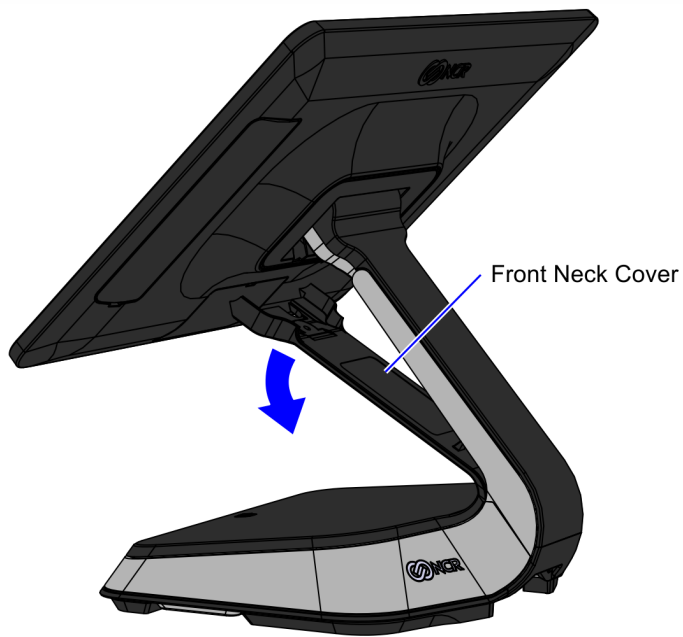
Note

Use only a screwdriver with a #1 Philips bit to avoid stripping the screw head.



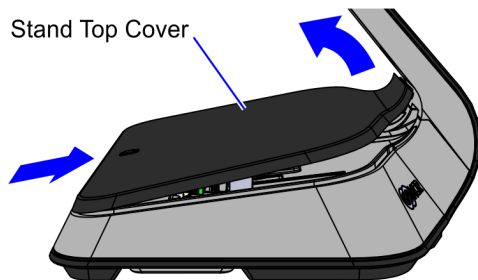
CCP-73936

3. Pivot the Front Neck Cover away from the terminal.



CCP-73937

4. Slightly push the front side of the Stand Top Cover, and then pivot the Cover open.

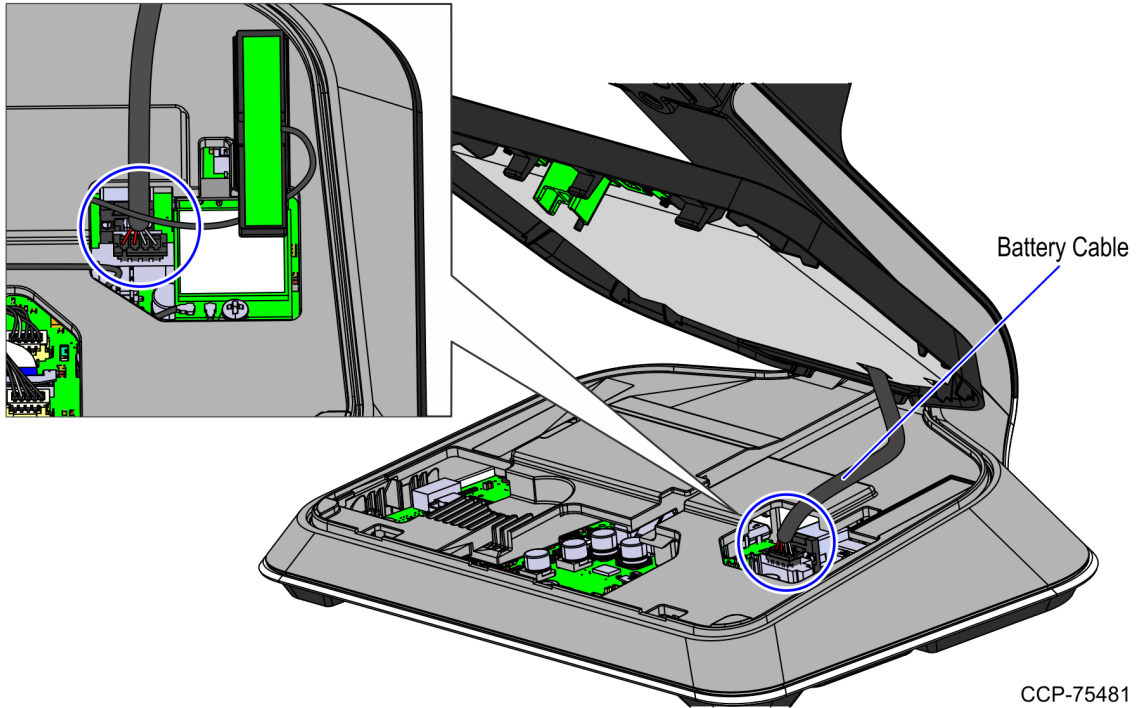


CCP-73942

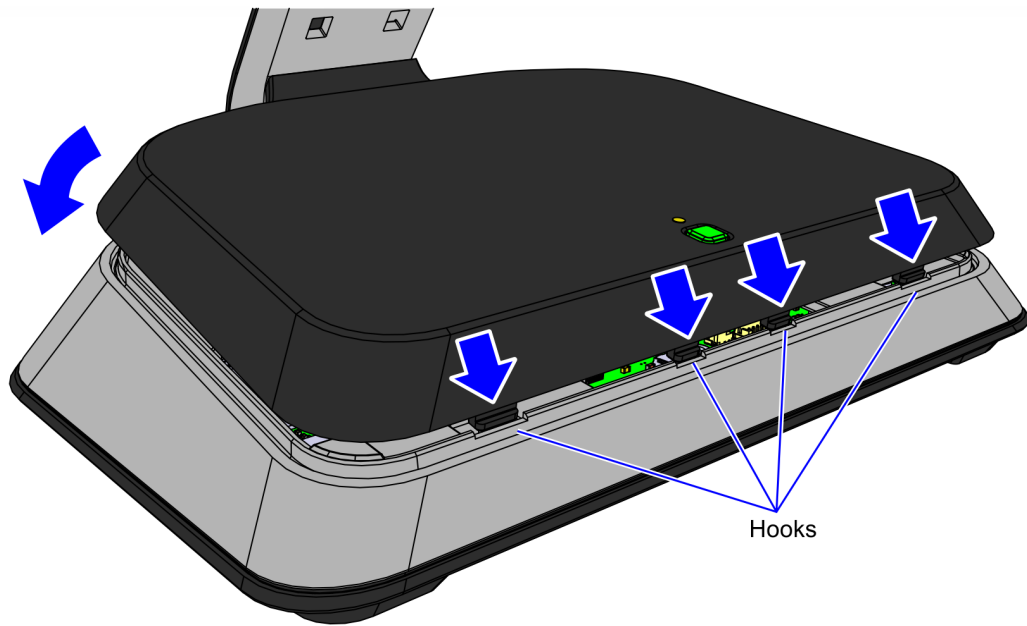
5. Install the Top Cover with Battery Assembly kit.
 - a. Connect the Battery Cable to the Motherboard.

 **Note**

The Battery Cable may have to be peeled off the Battery surface for easy connection.



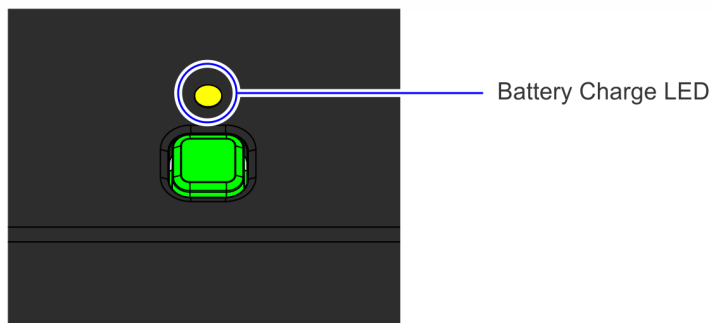
- b. Hook the Stand Top Cover into the stand, and then snap into place.



CCP-73944

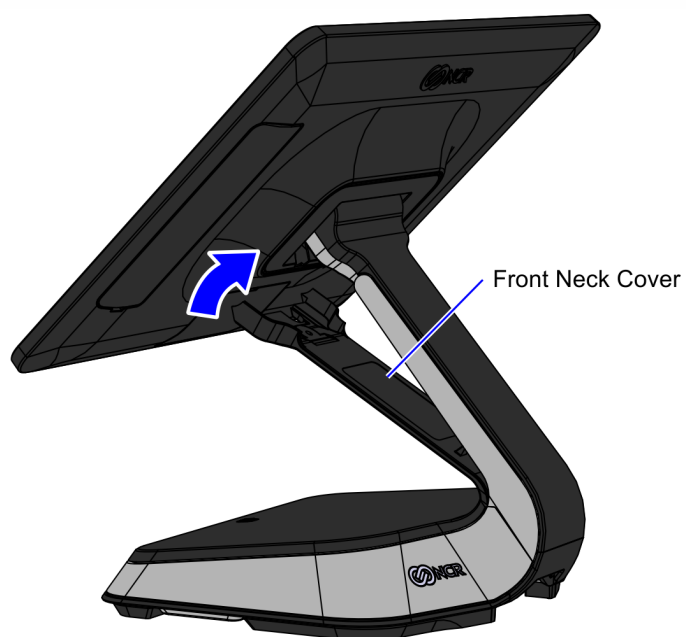
Note

After the Stand Top Cover is installed, check if the Battery Charge LED is flush with the top surface of the Cover. If the LED Lightpipe is protruding, push it flush with the Cover.



CCP-75474

6. Attach the Front Neck Cover to the terminal.



CCP-73961

7. Secure the Front Neck Cover to the neck with a screw (1).



CCP-73936

System States

When the unit is connected to AC Power

- The system runs at maximum performance. However, the performance decreases at high system temperatures.
- The Power LED is always ON. For LED indicators, refer to the table below:

LED Color	Status
Off	System is OFF.
Solid Green	System is ON.
Solid Blue	System is on STANDBY or SLEEP state.
Solid Orange	System is in SOFT OFF or HIBERNATE state.

- If the battery is installed,
 - The Battery LED functions according to the table below:

LED Color	Status
Off	Battery is not installed or no AC power source and battery is fully depleted
Solid Green	100% charged with AC power source or above 30% charged without AC power source
Slow Green (1 blink per second)	Charging, with charge level between 30% and 100%
Solid Orange	No AC power source, with charge level between 10% and 30%
Slow Orange (1 blink per second)	Charging, with charge level between 10% and 30%
Solid Red	No AC power source, with charge level between 0% and 10%
Slow Red (1 blink per second)	Charging, with charge level between 0% and 10%
Fast Red (2.5 blinks per second)	Battery needs to be replaced

- The battery is charged if it is not at maximum capacity.
- The battery is not charged if its temperature is below 0°C (32°F) or above 45°C (113°F). This is to maximize the battery lifespan.

When the unit is running on Battery Power only

- The system runs at reduced performance to extend the system battery life.
- If the system temperature drops below 10°C (50°F), the system performance is further reduced.
- The Power LED turns green when ON and blue when SLEEPING, but it turns completely OFF if the unit is shut down. The power button still functions even if the LED is OFF.
- The Battery LED functions according to the table below:

LED Color	Status
Off	Battery is not installed or no AC power source and battery is fully depleted
Solid Green	100% charged with AC power source or above 30% charged without AC power source
Slow Green (1 blink per second)	Charging, with charge level between 30% and 100%
Solid Orange	No AC power source, with charge level between 10% and 30%
Slow Orange (1 blink per second)	Charging, with charge level between 10% and 30%
Solid Red	No AC power source, with charge level between 0% and 10%
Slow Red (1 blink per second)	Charging, with charge level between 0% and 10%
Fast Red (2.5 blinks per second)	Battery needs to be replaced

When the Customer Display is connected to USB-C port

The customer display functions when:

- It is connected before the system boots on AC power.
- It is connected to a system that is running on AC power.



Note

If the system has a battery and is removed from AC power, the customer display remains ON.

- The customer display does not turn on when:
- It is connected to a unit that is booted on battery power.
- It is connected to a unit that is running on battery power.
- It is reconnected to AC power.