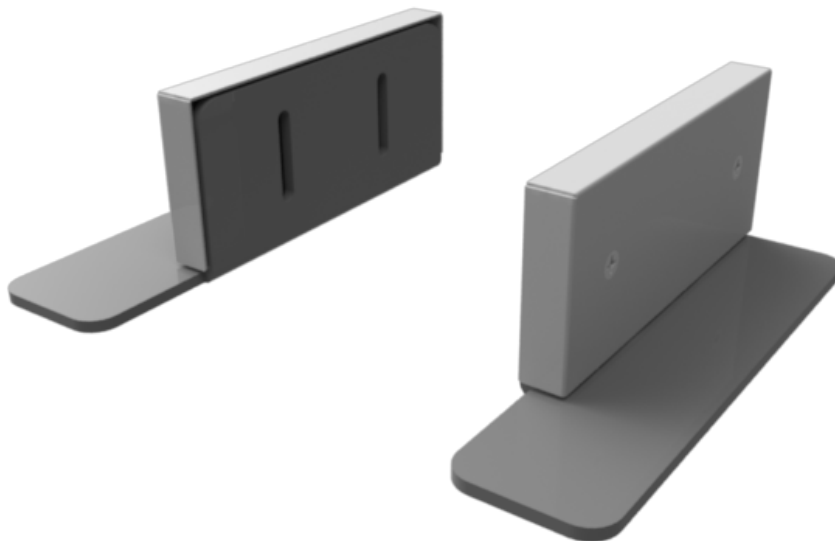




NCR Voyix SelfServ™ 90 (7709)

Kit Instructions

Semi-Self Stabilizer



7709-K902
Issue B

Copyright and Trademark Information

The product described in this document is a copyrighted work of NCR Voyix Corporation.

NCR Voyix SelfServ™ 90 (7709) is a trademark of NCR Voyix Corporation.

It is the policy of NCR Voyix Corporation to improve products as technology, components, software and firmware become available. NCR Voyix therefore reserves the right to change specifications without prior notice.

All features, functions and operations described herein may not be marketed by NCR Voyix in all parts of the world. In some instances, photographs are of equipment prototypes.

Therefore, before using this document, consult with your NCR Voyix representative or NCR Voyix office for information that is applicable and current.

© 2017 – 2026

By NCR Voyix Corporation

Atlanta, Georgia, USA

All Rights Reserved

Table of Contents

7709-K902 Semi-Self Stabilizer	5
Kit Contents	5
Required Tools	7
Installation Procedure	8

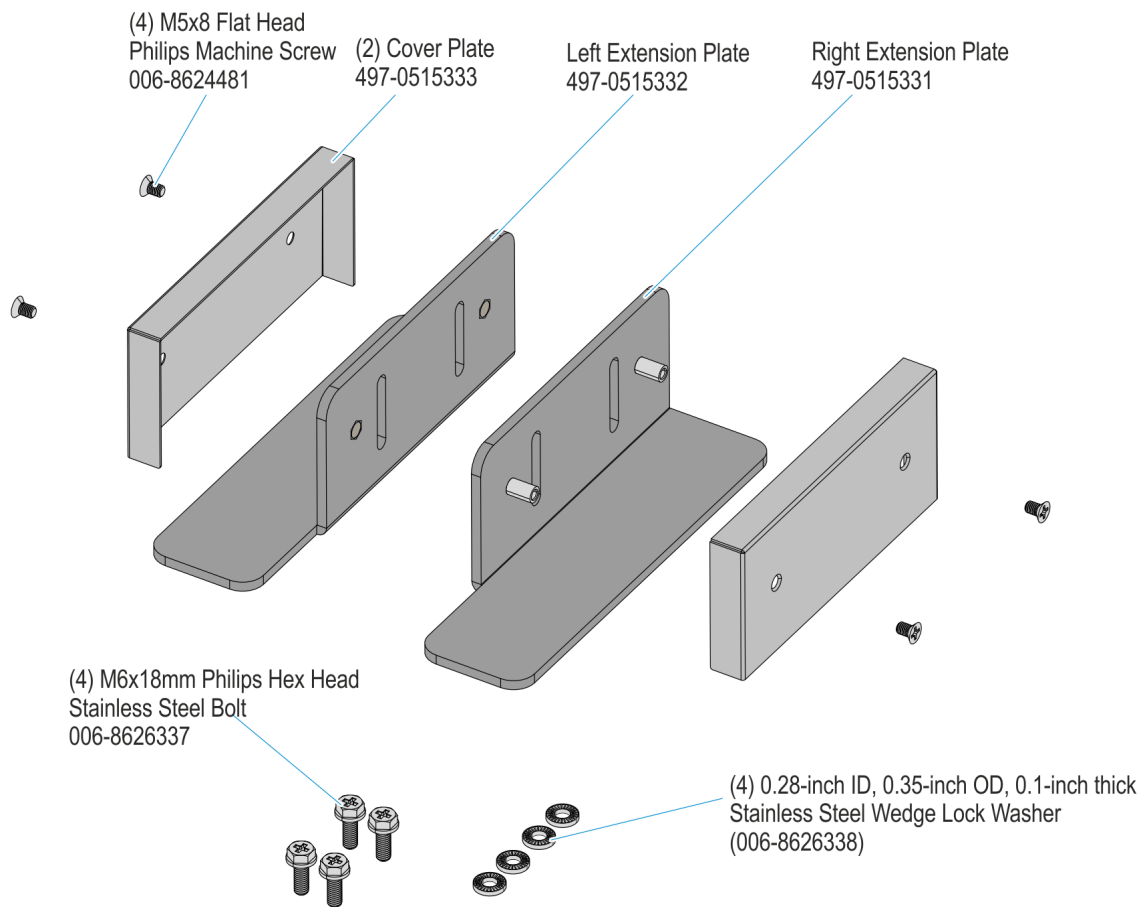
Revision Record

Publication issue	Date	Description of change
A	May 2017	First issue.
B	Jan 2026	Updated with NCR Voyix brand.

7709-K902 Semi-Self Stabilizer

This publication provides procedures for installing the 7709-K902 Semi-Self Stabilizer to stabilize the NCR Voyix SelfServ™ 90 (7709) Semi-Self configuration.

Kit Contents



CCP-71664

Part Number	Description
497-0518337	7709-K902 Semi-Self Stabilizer
006-8624481	Screw - M5X8, Flat Head, Phillips, Machine Screw (4 Pcs)
006-8626337	Bolt— Phillips Hex Head, M6 X 18Mm, Stainless Stl (4 Pcs)
006-8626338	Washer — Wedge Lock, .28" Id, .53" Od, .1" Thk, Stainless Stl (4 Pcs)

Part Number	Description
497-0515331	Extension Plate, Right
497-0515332	Extension Plate, Left
497-0515333	Cover Plate (2 Pcs)
* 497-0423108	Instructions-Kit (Reference Sheet)

* Items marked with an asterisk are not called out on the image.

Required Tools

The following tools are required to install this kit:

- #2 Phillips Screwdriver
- **10mm** Nut Driver



Note

It is highly recommended to use magnetized screwdrivers to easily handle the screws.

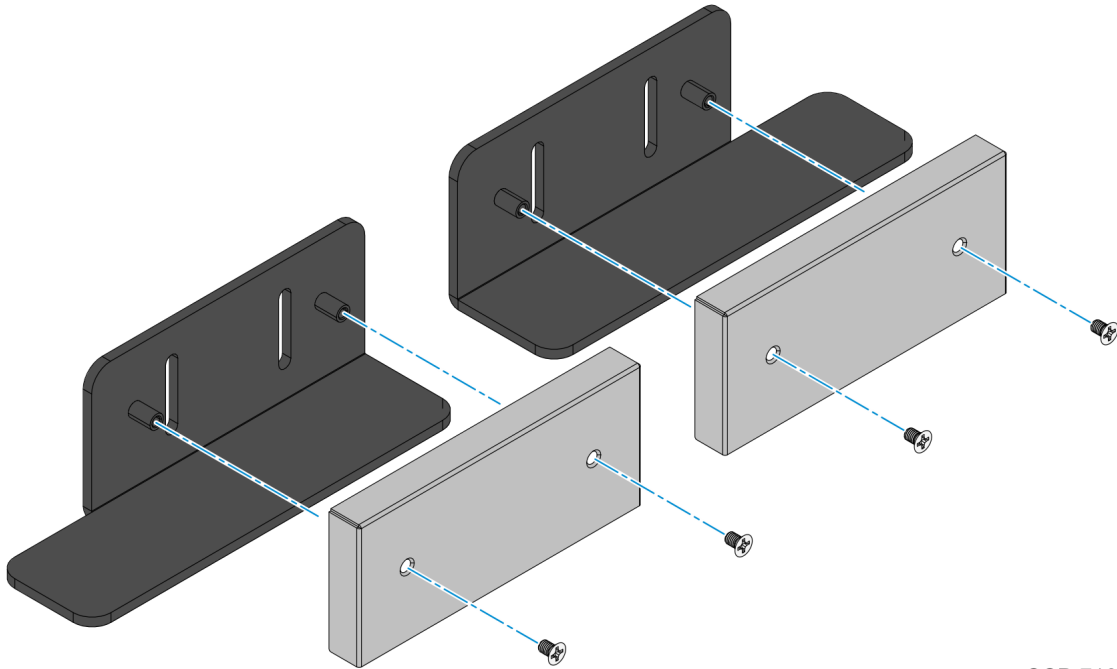
Installation Procedure



Warning

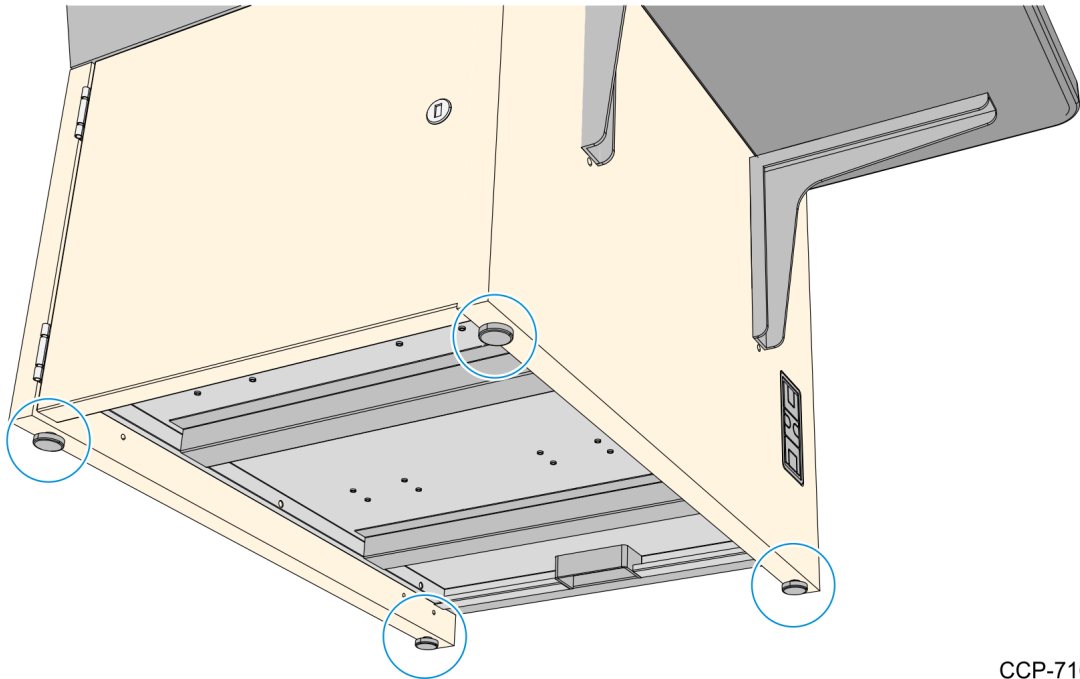
Disconnect the AC power cord before disassembling the Terminal.

1. Remove the Cover Plate on each extension plate set by removing the M5 flat head screws (2). Place the screws (4) inside the zip bag to secure them.



CCP-71645

2. Make sure that all four leveling feet in the Kiosk pedestal is properly leveled on the ground.



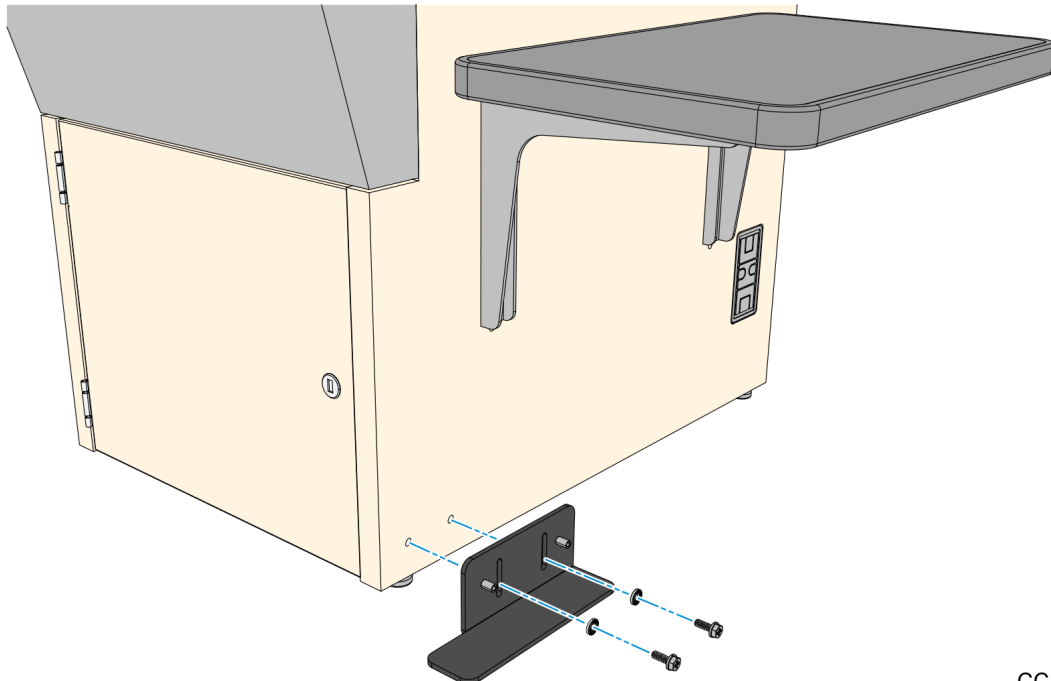
CCP-71646

3. Attach and secure the Right Extension plate to the pedestal using bolts (2) and wedge washers (2). Use a 10mm nut driver with a torque limiter setup to 45 in-lbs.



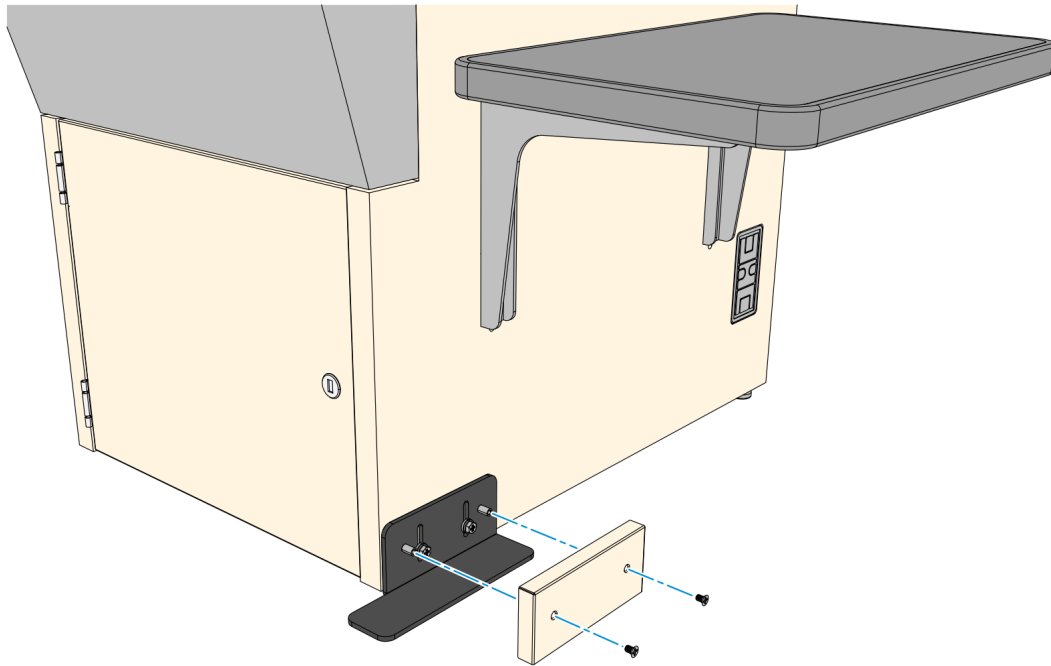
Note

Make sure that the Extension plate sits flat on the ground, leveled along with the pedestal leveling feet.



CCP-71647

4. Attach and secure the Cover to the Extension Plate using M5 flat screws (2). Use a #2 Phillips screwdriver with a torque limiter setup to 20.0 in-lbs.

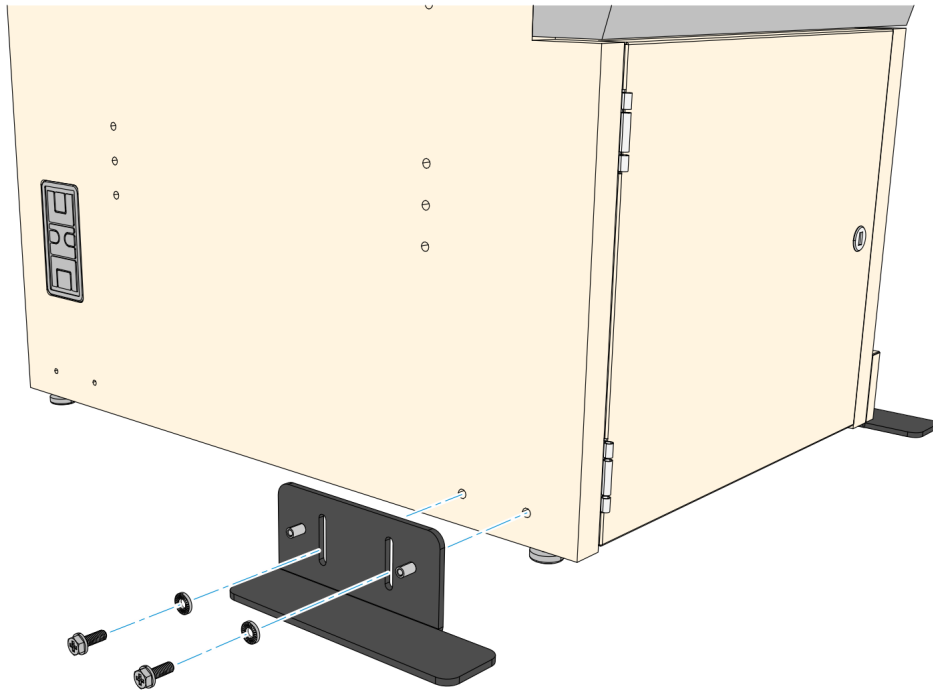


CCP-71648

5. Attach and secure the Left Extension plate to the pedestal using bolts (2) and wedge washers (2). Use a 10mm nut driver with a torque limiter setup to 45 in-lbs.

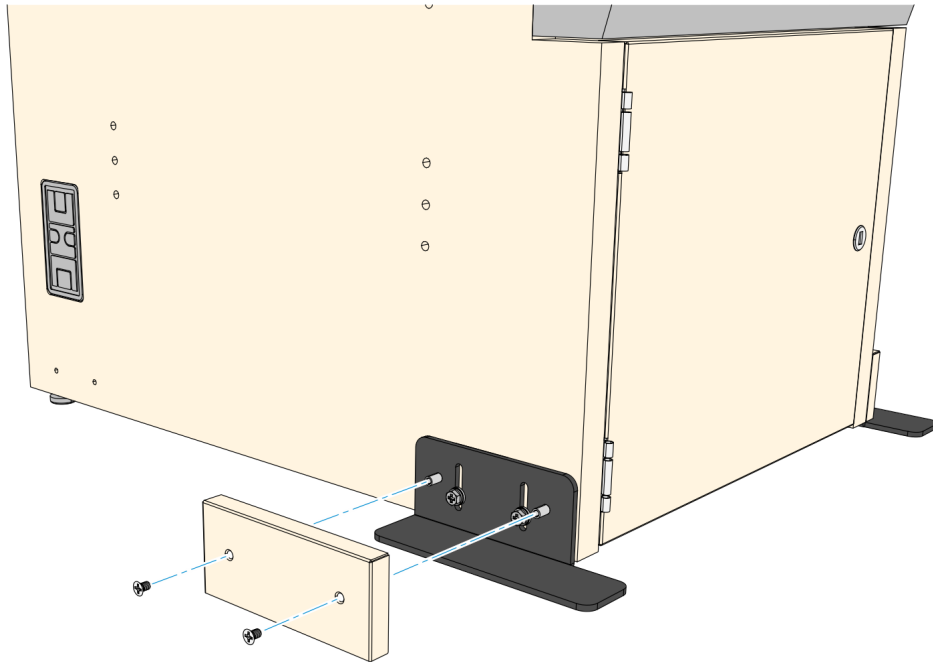
**Note**

Make sure that the Extension plate sits flat on the ground, leveled along with the pedestal leveling feet.



CCP-71649

6. Attach and secure the Cover to the Extension Plate using M5 flat screws (2). Use a #2 Phillips screwdriver with a torque limiter setup to 20.0 in-lbs.



CCP-71650