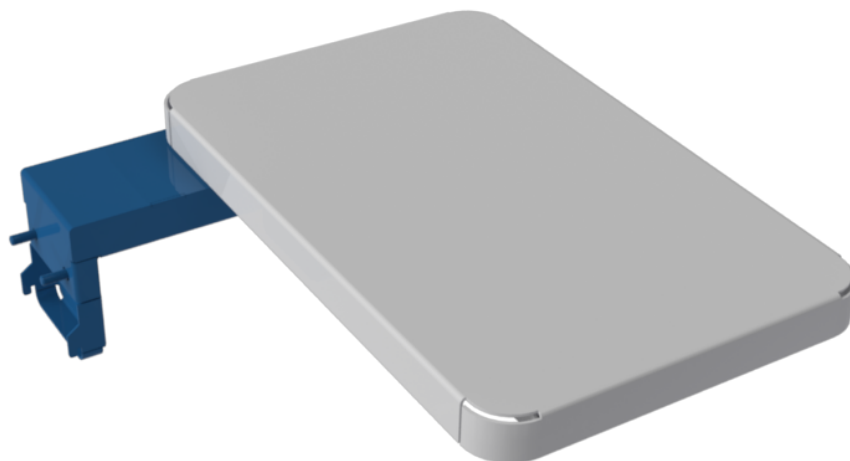




NCR Voyix SelfServ™ 90 (7709)

Kit Instructions

Wide Shelf (Midnight Blue)



7709-K812
Issue B

Copyright and Trademark Information

The product described in this document is a copyrighted work of NCR Voyix Corporation.

NCR Voyix SelfServ™ 90 (7709) is a trademark of NCR Voyix Corporation.

It is the policy of NCR Voyix Corporation to improve products as technology, components, software and firmware become available. NCR Voyix therefore reserves the right to change specifications without prior notice.

All features, functions and operations described herein may not be marketed by NCR Voyix in all parts of the world. In some instances, photographs are of equipment prototypes.

Therefore, before using this document, consult with your NCR Voyix representative or NCR Voyix office for information that is applicable and current.

© 2017 – 2026

By NCR Voyix Corporation

Atlanta, Georgia, USA

All Rights Reserved

Table of Contents

7709-K812 Wide Shelf (Midnight Blue)	5
Kit Contents	5
Installation Procedure	6

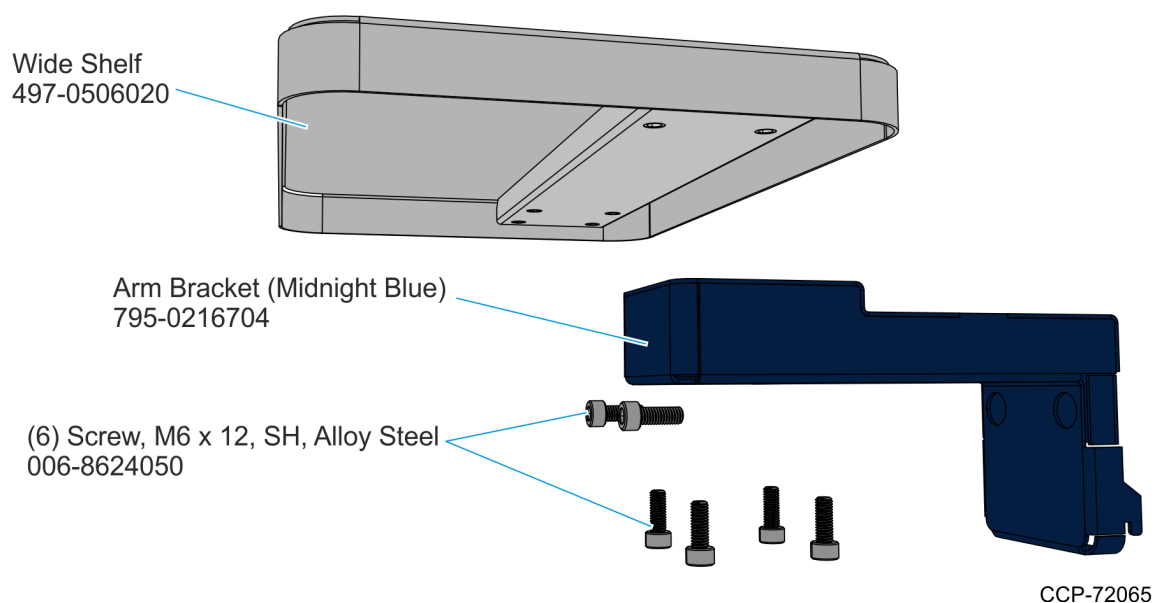
Revision Record

Publication issue	Date	Description of change
A	Sep 2017	First issue.
B	Jan 2026	Updated with NCR Voyix brand.

7709-K812 Wide Shelf (Midnight Blue)

This publication provides procedures for installing 7709-K812 Wide Shelf (Midnight Blue) to the NCR Voyix SelfServ™ 90 (7709) Kiosk.

Kit Contents

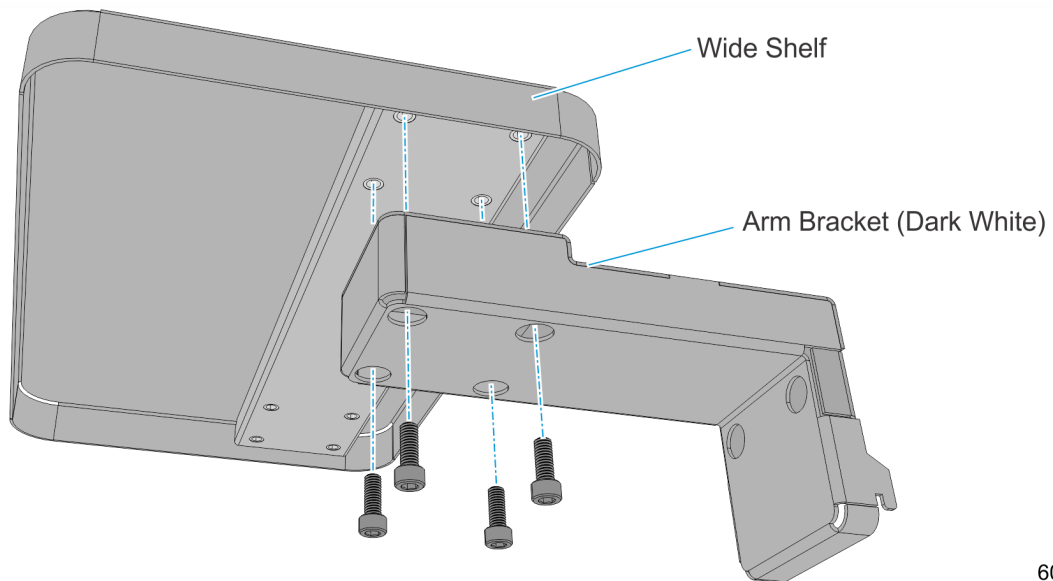


Part Number	Description
497-0519631	7709-K812 Wide Shelf (Midnight Blue)
006-8624050	Screw, M6X12, Socket Head, Alloy Steel, Zinc-Plated
497-0506020	Shelf, Wide
795-0216704	Arm Bracket (Midnight Blue)
* 497-0519639	Paint Specification – Midnight Blue
* 497-0505844	SelfServ 90 London Kiosk Paint Color Cross Reference Document
* 497-0423108	Instructions-Kit (Reference Sheet)

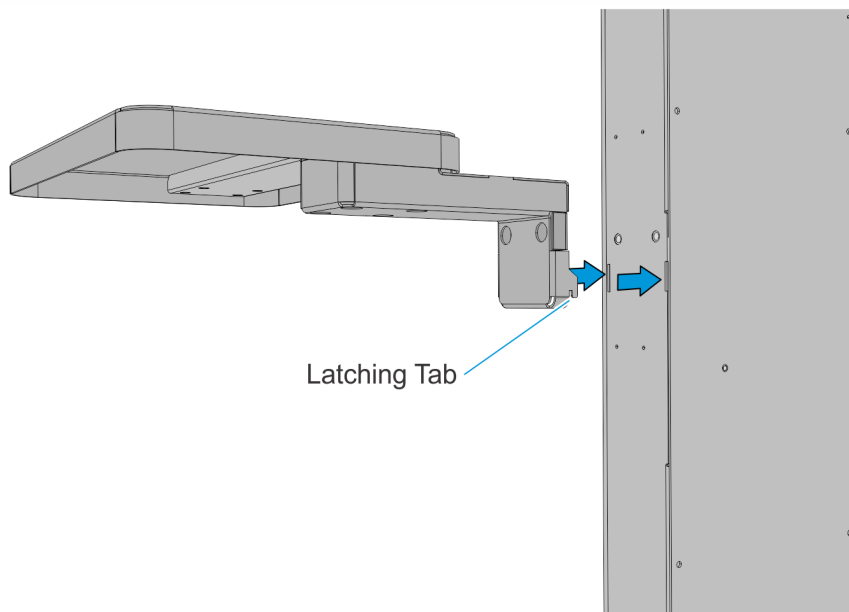
* Items marked with an asterisk are not called out on the image.

Installation Procedure

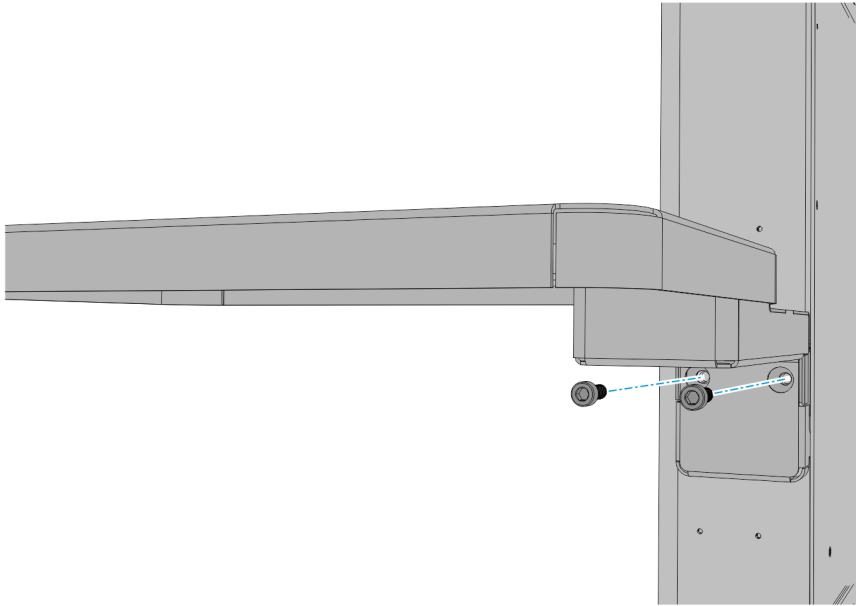
1. Attach the Wide Shelf to the Arm Bracket. Secure with four (4) screws.



2. Position the Latching Tabs (2) on the bottom of the arm bracket through the slots on the side of the pedestal.



3. Secure and tighten with screws (2).



60885