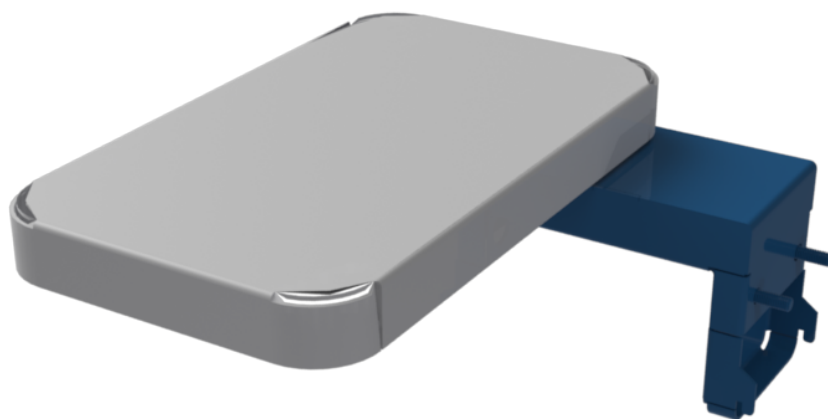




NCR Voyix SelfServ™ 90 (7709)

Kit Instructions

Narrow Shelf (Midnight Blue)



7709-K811
Issue B

Copyright and Trademark Information

The product described in this document is a copyrighted work of NCR Voyix Corporation.

NCR Voyix SelfServ™ 90 (7709) is a trademark of NCR Voyix Corporation.

It is the policy of NCR Voyix Corporation to improve products as technology, components, software and firmware become available. NCR Voyix therefore reserves the right to change specifications without prior notice.

All features, functions and operations described herein may not be marketed by NCR Voyix in all parts of the world. In some instances, photographs are of equipment prototypes.

Therefore, before using this document, consult with your NCR Voyix representative or NCR Voyix office for information that is applicable and current.

© 2017 – 2026

By NCR Voyix Corporation

Atlanta, Georgia, USA

All Rights Reserved

Confidential and proprietary information of NCR Voyix.

Use and disclose solely pursuant to company instructions.

Table of Contents

7709-K811 Narrow Shelf (Midnight Blue) **5**

 Kit Contents 5

 Installation Procedure 6

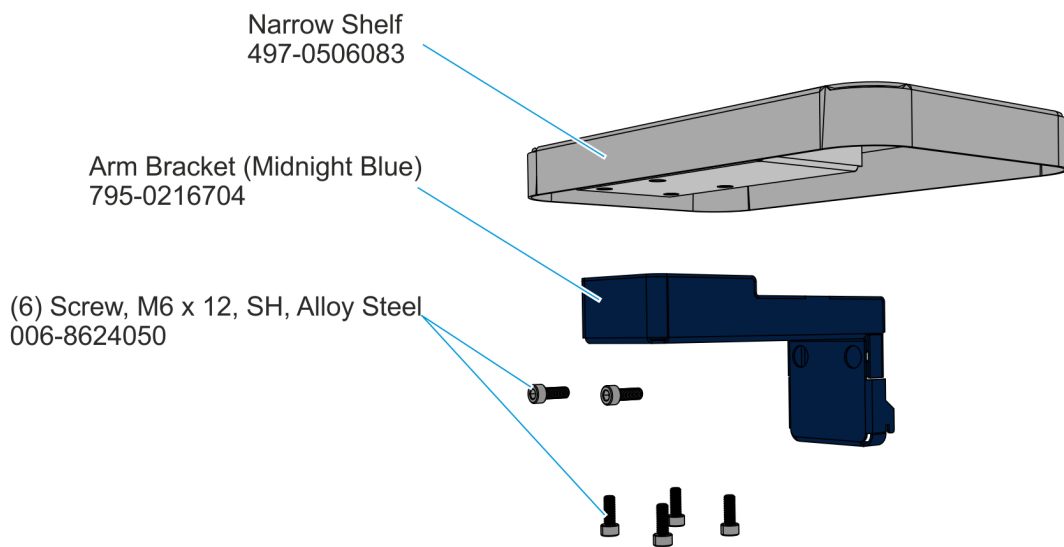
Revision Record

Publication issue	Date	Description of change
A	Sep 2017	First issue.
B	Jan 2026	Updated with NCR Voyix brand.

7709-K811 Narrow Shelf (Midnight Blue)

This publication provides procedures for installing the 7709-K811 Narrow Shelf (Midnight Blue) to the NCR Voyix SelfServ™ 90 (7709) Kiosk.

Kit Contents



CCP-72066

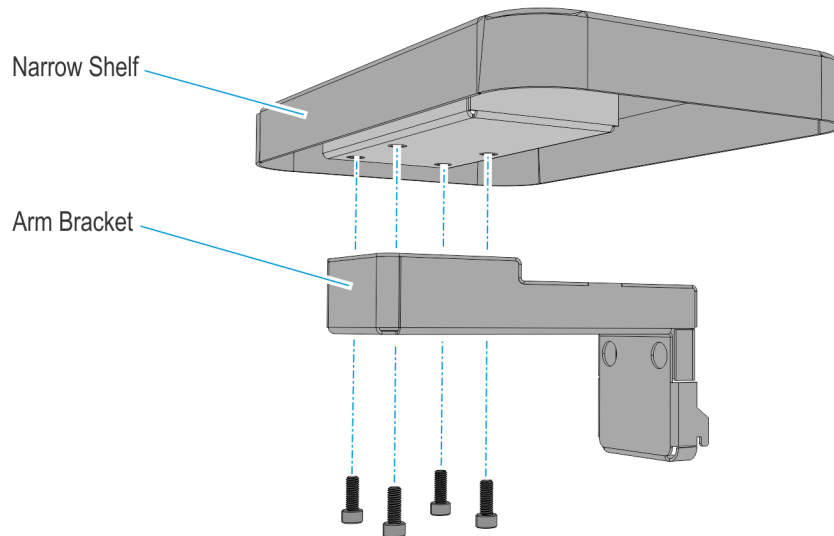
Part Number	Description
497-0519630	7709-K811 Narrow Shelf (Midnight Blue)
006-8624050	Screw, M6X12, Socket Head, Alloy Steel, Zinc-Plated
497-0506083	Shelf, Narrow
795-0216704	Arm Bracket (Midnight Blue)
* 497-0519639	Paint Specification – Midnight Blue
* 497-0505844	SelfServ 90 London Kiosk Paint Color Cross Reference Document
* 497-0423108	Instructions-Kit (Reference Sheet)

* Items marked with an asterisk are not called out on the image.

Confidential and proprietary information of NCR Voyix.
Use and disclose solely pursuant to company instructions.

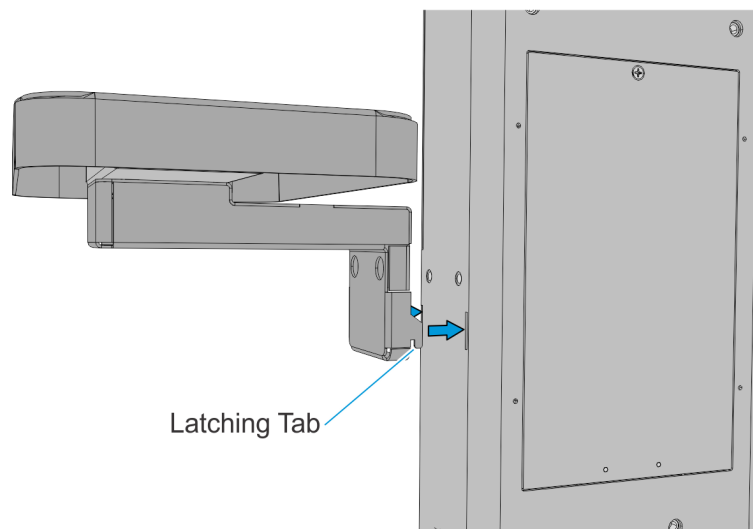
Installation Procedure

1. Attach the Narrow Shelf to the Arm Bracket. Secure with screws (4).



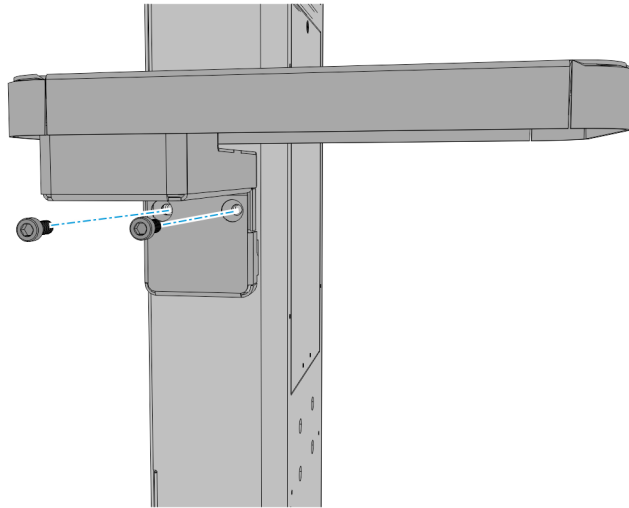
60891

2. Position the Latching Tabs (2) on the bottom of the arm bracket through the slots on the side of the pedestal.



60890

3. Secure and tighten with screws (2).



60889