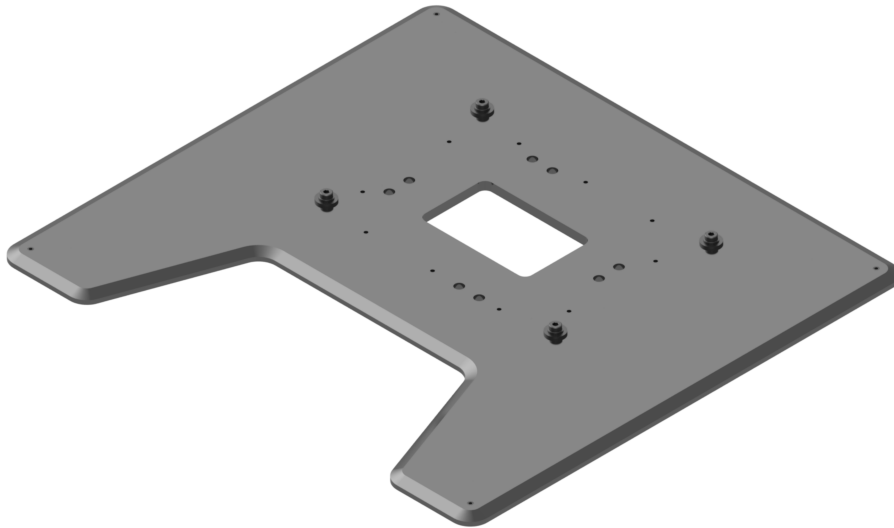




NCR Voyix SelfServ™ 90 (7709)

Kit Instructions

Base Plate (Global, Impact Mid Silver)



7709-K439
Issue B

Copyright and Trademark Information

The product described in this document is a copyrighted work of NCR Voyix Corporation.

NCR Voyix SelfServ™ 90 (7709) is a trademark of NCR Voyix Corporation.

It is the policy of NCR Voyix Corporation to improve products as technology, components, software and firmware become available. NCR Voyix therefore reserves the right to change specifications without prior notice.

All features, functions and operations described herein may not be marketed by NCR Voyix in all parts of the world. In some instances, photographs are of equipment prototypes.

Therefore, before using this document, consult with your NCR Voyix representative or NCR Voyix office for information that is applicable and current.

© 2019 – 2026

By NCR Voyix Corporation

Atlanta, Georgia, USA

All Rights Reserved

Table of Contents

7709-K439 Base Plate (Global, Impact Mid Silver)	5
Kit Contents	5
Installation Procedure	7
Adjusting the Leveling Screws	9

Revision Record

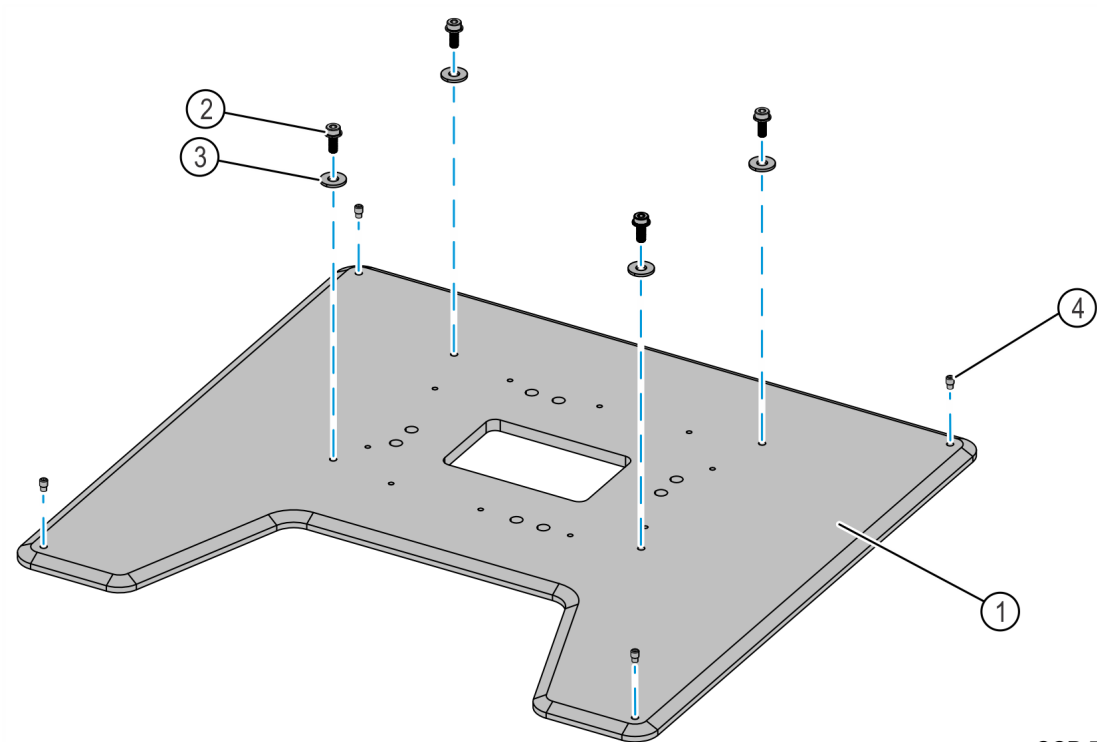
Publication issue	Date	Description of change
A	Sep 2019	First Issue.
B	Jan 2026	Updated with NCR Voyix brand.

7709-K439 Base Plate (Global, Impact Mid Silver)

This publication provides procedures for installing the 7709-K439 Base Plate (Global, Impact Mid Silver) to the NCR Voyix SelfServ™ 90 (7709) Kiosk.

Kit Contents

CCP-77603



CCP-77603

Part Number	Description
497-0530094	7709-K439 Base Plate (Global, Impact Mid Silver)
006-8604919	Screw - M3 X 0.5, 8Mm, Phillips Flat Zinc Plated (4 pcs)
009-0007087	Serrated Nut-Self Locking (Hex,M4,4.2)
006-8622588	M4 X 6Mm Length, Flat Head, Zinc Plated (2 pcs)

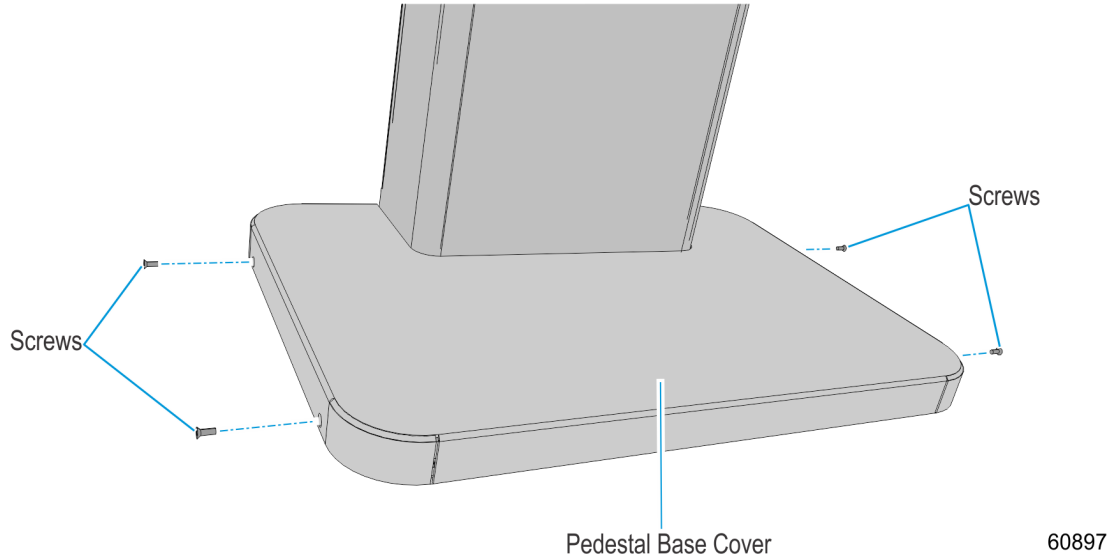
Part Number	Description
006-8624070	Grommet, 50Mm Cut Dia, 41Mm Inner Dia
006-8624161	Screw - M8 X 16, Socket Cap, Flanged, Serrated (4 pcs)
795-0215303	Door, Back, Pedestal (Walmart Blue)
795-0215103	Door, Front, Pedestal (Walmart Blue)
795-0290303	Weldment, Column, Pedestal, (Walmart Blue)
795-0215002	Cover, Base, Pedestal (Impact Mid Silver)
795-0284101	SS90 Hole Cover Label - Dark White
* 497-0462509	Paint Specification - Wal-Blue
* 497-0508034	Paint Specifications For Powder Coat Mid-Silver
* 497-0505844	Self Serv 90 London Kiosk Paint Color Cross Reference Document
* 497-0423108	Instructions-Kit (Reference Sheet)
* 497-0510631	Instruction Sheet To Install 795-0231600/1699 - SS90 Hole Cover

* Items marked with an asterisk are not called out on the image.

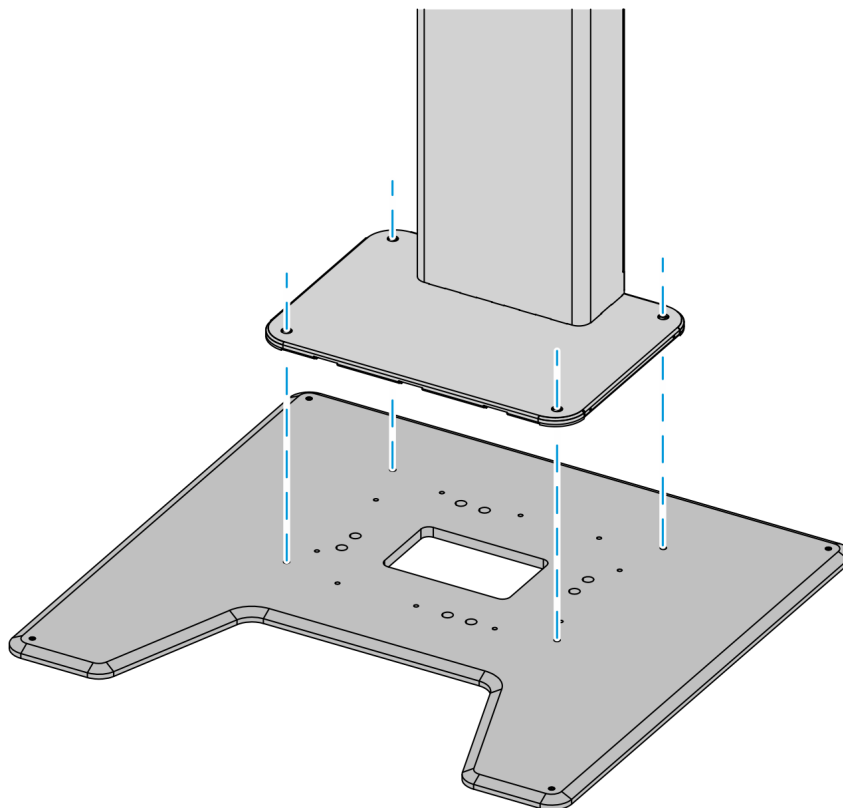
Installation Procedure

To install the Base Plate kit, follow these steps:

1. Remove the pedestal base cover by removing the four screws that secure it to the base.

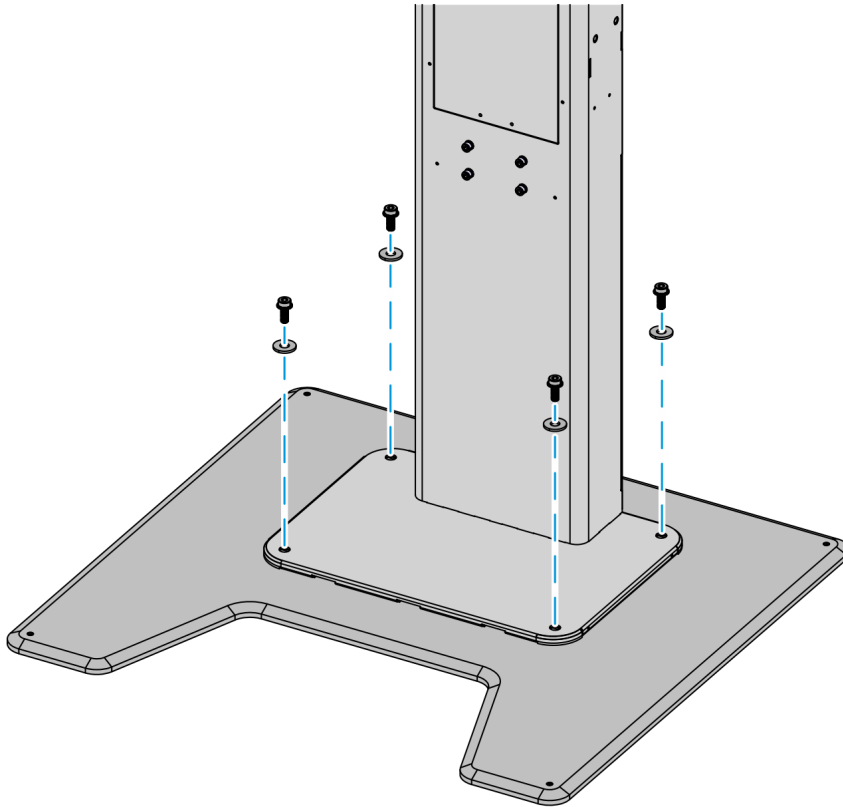


2. Align the four mounting holes on the pedestal base with the four mounting holes on the base plate.



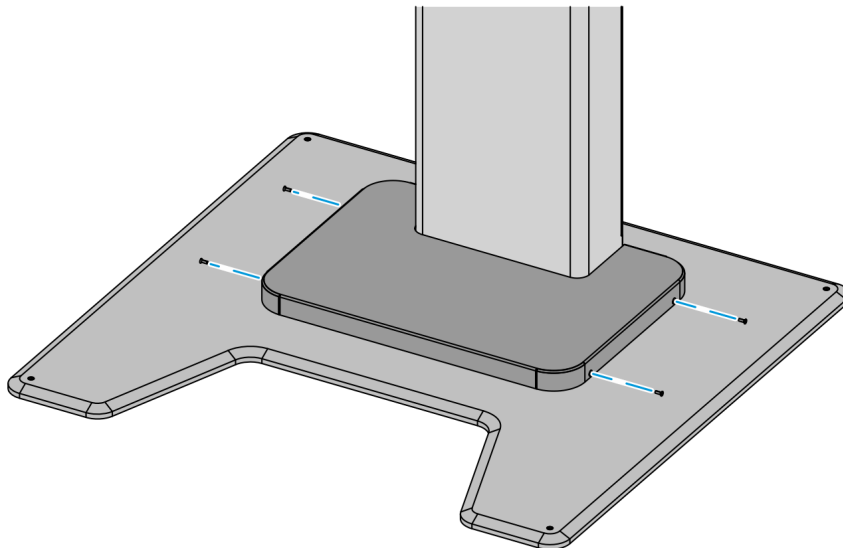
CCP-77604

3. Secure the pedestal with four M8x20mm screws and four washers.



CCP-77605

4. Re-install the pedestal base cover and secure with four screws.



CCP-77607

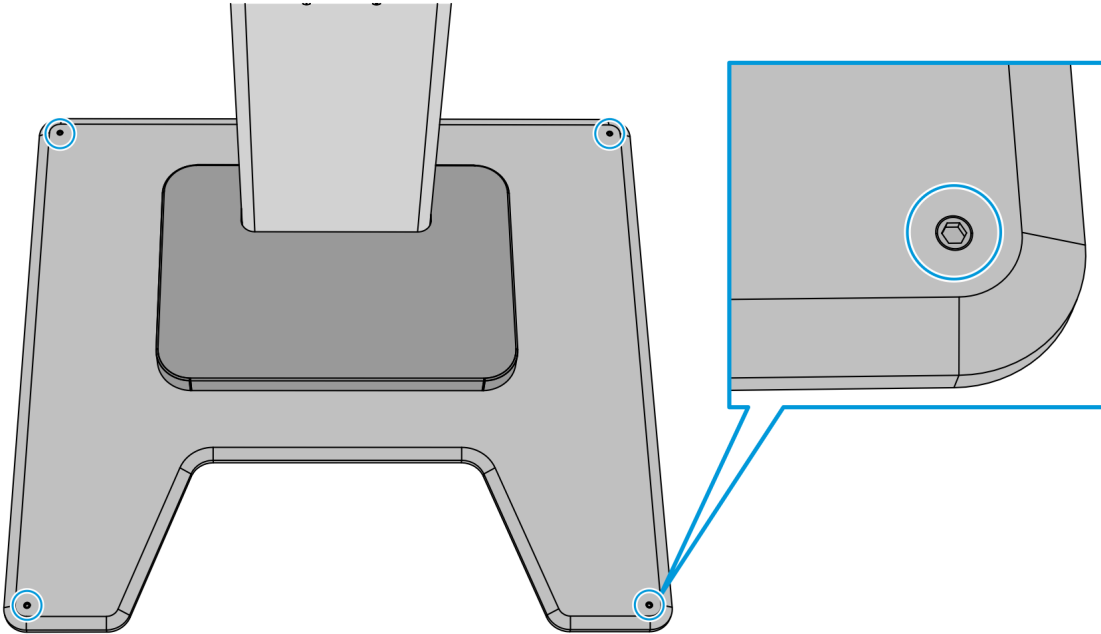
Adjusting the Leveling Screws

The Base Plate kit comes with four leveling screws to help maintain proper leveling of the kiosk.



Note

Use a 4mm Allen key or a similar tool to install or adjust the leveling screws.



CCP-77606