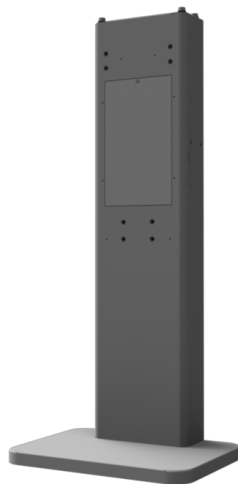




NCR Voyix SelfServ™ 90 (7709)

Kit Instructions

Pedestal (Dark White Color & Impact Mid Silver)



7709-K430
Issue D

Copyright and Trademark Information

The product described in this document is a copyrighted work of NCR Voyix Corporation.

NCR Voyix SelfServ™ 90 (7709) is a trademark of NCR Voyix Corporation.

It is the policy of NCR Voyix Corporation to improve products as technology, components, software and firmware become available. NCR Voyix therefore reserves the right to change specifications without prior notice.

All features, functions and operations described herein may not be marketed by NCR Voyix in all parts of the world. In some instances, photographs are of equipment prototypes.

Therefore, before using this document, consult with your NCR Voyix representative or NCR Voyix office for information that is applicable and current.

© 2016 – 2026

By NCR Voyix Corporation

Atlanta, Georgia, USA

All Rights Reserved

Table of Contents

| | |
|--|----------|
| 7709-K430 Pedestal (Dark White Color & Impact Mid Silver) | 5 |
| Kit Contents | 6 |
| Installation Procedures | 8 |

Revision Record

| Publication issue | Date | Description of change |
|-------------------|----------|--|
| A | Apr 2016 | First Issue. |
| B | Jun 2017 | Added recommended bolt sizes for base plate. |
| C | Nov 2020 | Updated kit contents. |
| D | Jan 2026 | Updated with NCR Voyix brand. |

7709-K430 Pedestal (Dark White Color & Impact Mid Silver)

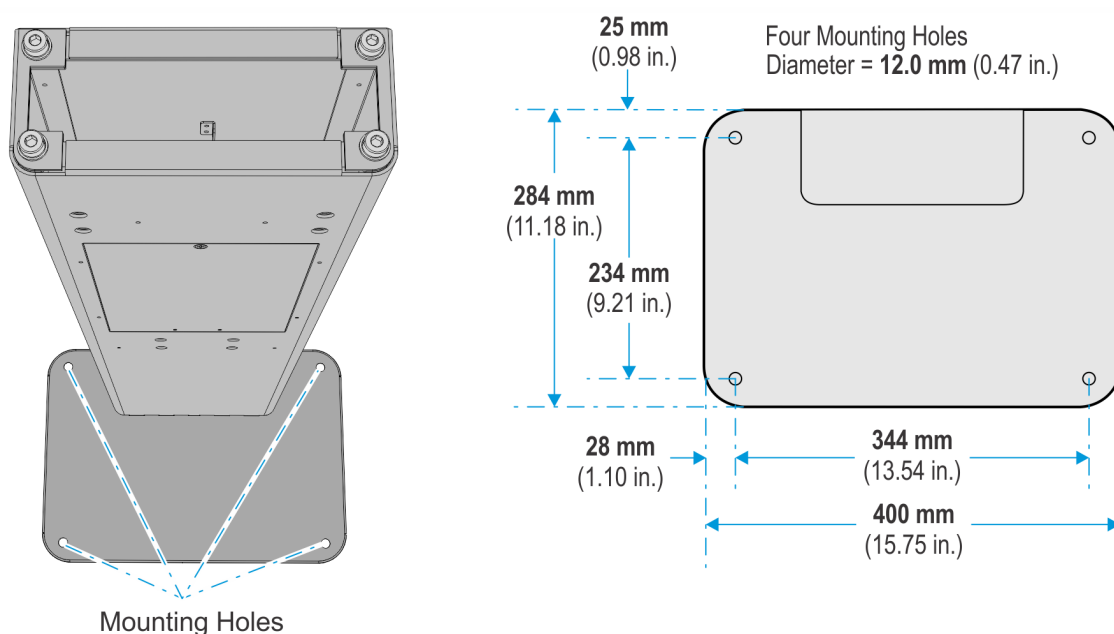
This kit provides components to add a pedestal kit to the NCR Voyix SelfServ™ 90 (7709).

The pedestal must be fastened to the floor to prevent it from being moved or knocked over.

The floor construction determines the type of anchors to use. The anchors are not shipped with the kiosk and must be obtained locally. There are four Anchor Holes in the Pedestal Base with dimensions shown in the illustration below.

The anchors must not extend up above the top of the Pedestal Base more than 12.7 mm (0.5 in.).

For more information on preparing the installation site of the Kiosk, see the NCR SelfServ 90 (7709) Site Preparation Guide.



Recommended Bolt Specification:

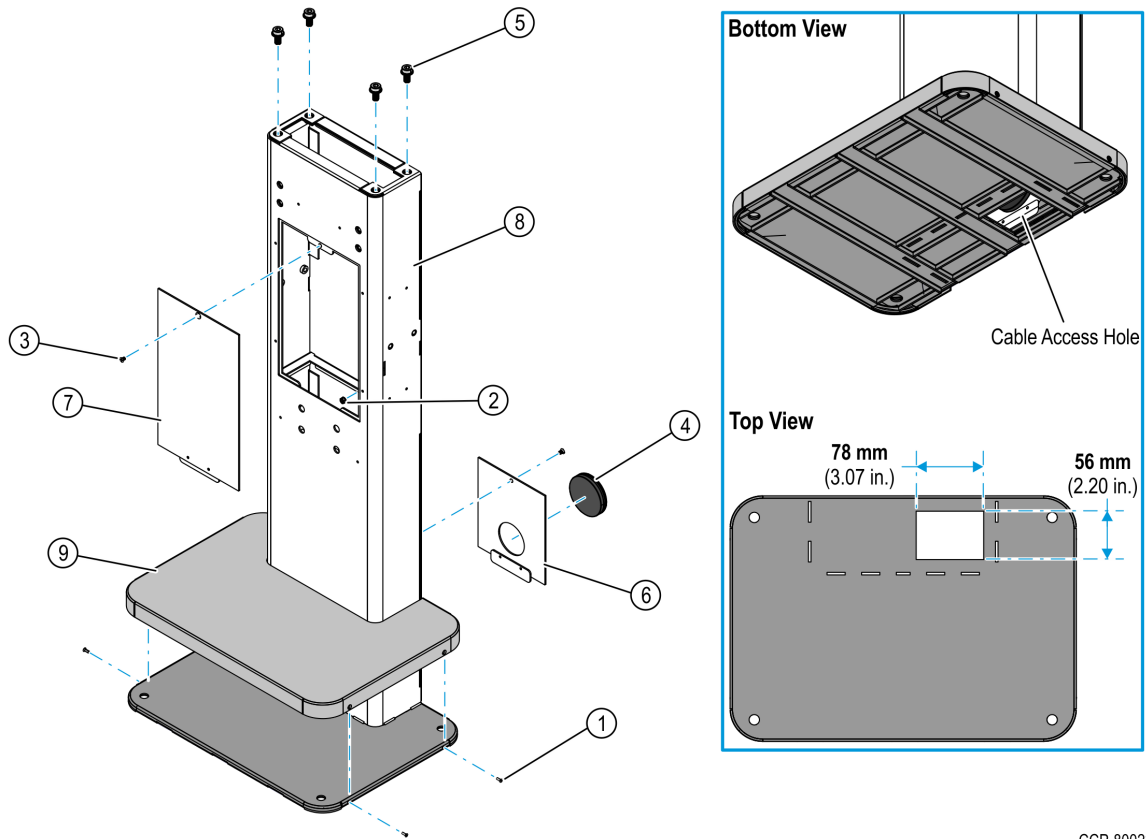
Size: **M10** (3/8 in.) Socket Cap Bolts

Length: **76 mm** (3 in.)

Allen Key Size for Bolt Head: **8mm** (5/16 in.)

CCP-60896

Kit Contents



CCP-80023

| Part Number | | Description |
|-------------|-------------|--|
| 497-0529971 | | Kit - Pedestal (Dark White Color & Impact Mid Silver) |
| 1 | 006-8604919 | Screw - M3 X 0.5, 8mm, Phillips Flat Zinc Plated (4 pcs) |
| 2 | 006-8611753 | Nut, Kep, M4 |
| 3 | 006-8622588 | M4 X 6mm Length, Flat Head, Zinc Plated (2 pcs) |
| 4 | 006-8624070 | Grommet, 50mm Cut Dia, 41mm Inner Dia |
| 5 | 006-8624161 | Screw - M8 X 16, Socket Cap, Flanged, Serrated (4 pcs) |
| 6 | 795-0215301 | Door, Back, Pedestal (Dark White) |
| 7 | 795-0215101 | Door, Front, Pedestal (Dark White) |
| 8 | 795-0290301 | Weldment, Column, Pedestal, (Dark White) |

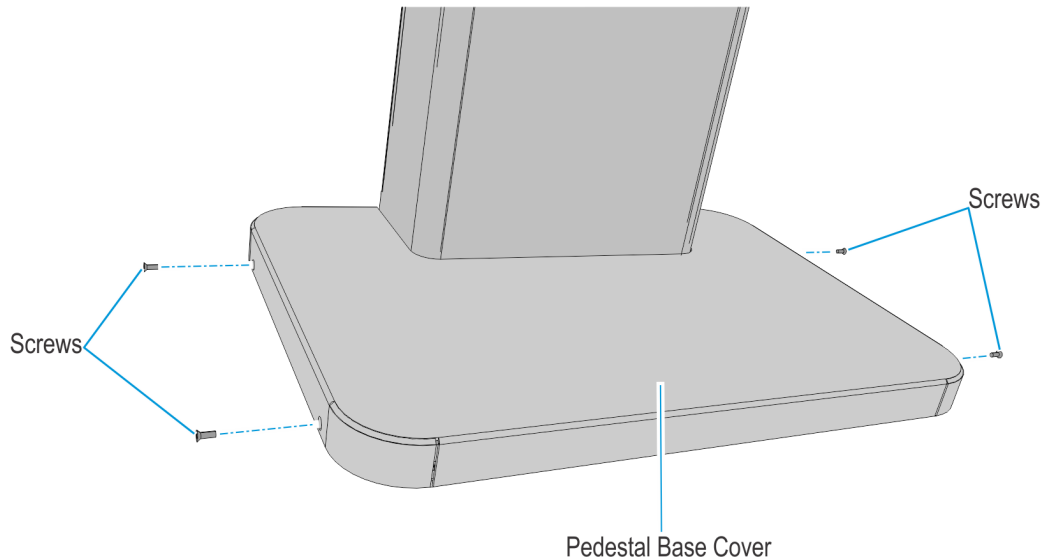
Confidential and proprietary information of NCR Voyix.
Use and disclose solely pursuant to company instructions.

| Part Number | | Description |
|-------------|-------------|---|
| 9 | 795-0215002 | Cover, Base, Pedestal (Impact Mid Silver) |
| 10* | 795-0284101 | SS90 Hole Cover Label - Dark White |
| 11* | 497-0505842 | Paint Spec - Dark White Color |
| 12* | 497-0508034 | Paint Specifications For Powder Coat Mid-Silver |
| 13* | 497-0505844 | Self Serv 90 London Kiosk Paint Color Cross Reference Document |
| 14* | 497-0423108 | Instructions-Kit (Reference Sheet) |
| 15* | 497-0510631 | Instruction Sheet To Install 795-0231600/1699 - SS90 Hole Cover |

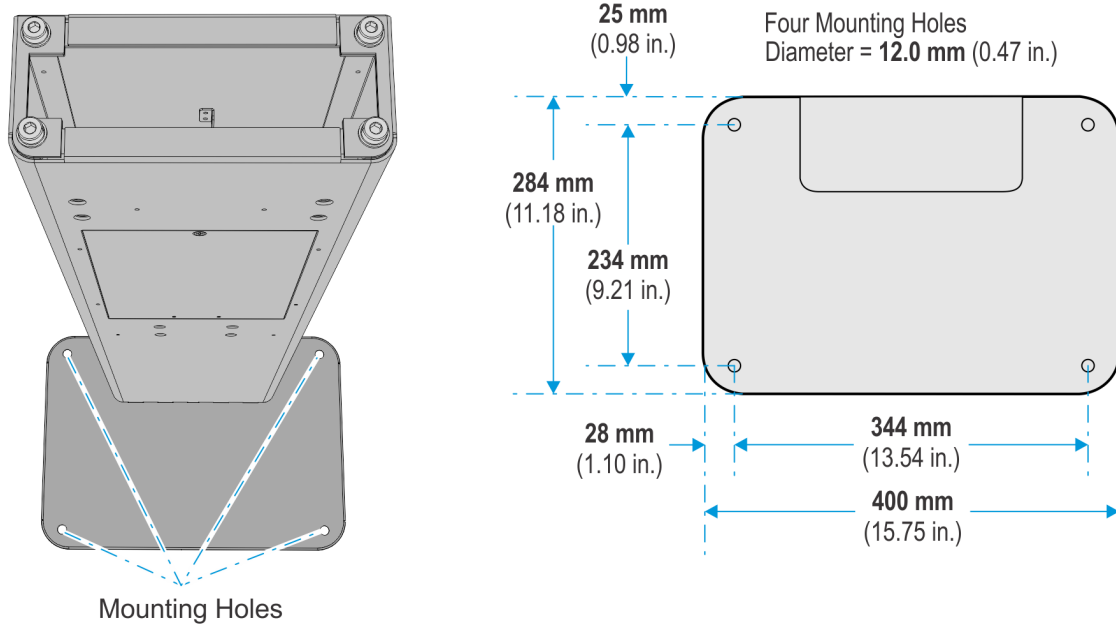
* Items marked with an asterisk are not called out on the image.

Installation Procedures

1. Determine the location of the Pedestal. Verify that this position permits access to the AC Power Receptacle and the LAN Cable. Also, make sure that there is necessary access and service clearance. Refer to the NCR Voyix SelfServ™ 90 (7709) Site Preparation Guide.
2. Remove the Pedestal Base Cover by removing the screws (4) that secures it to the base.



3. Mark the anchor holes (4) in the pedestal base on the floor. Remove the pedestal.



Recommended Bolt Specification:

Size: **M10** (3/8 in.) Socket Cap Bolts

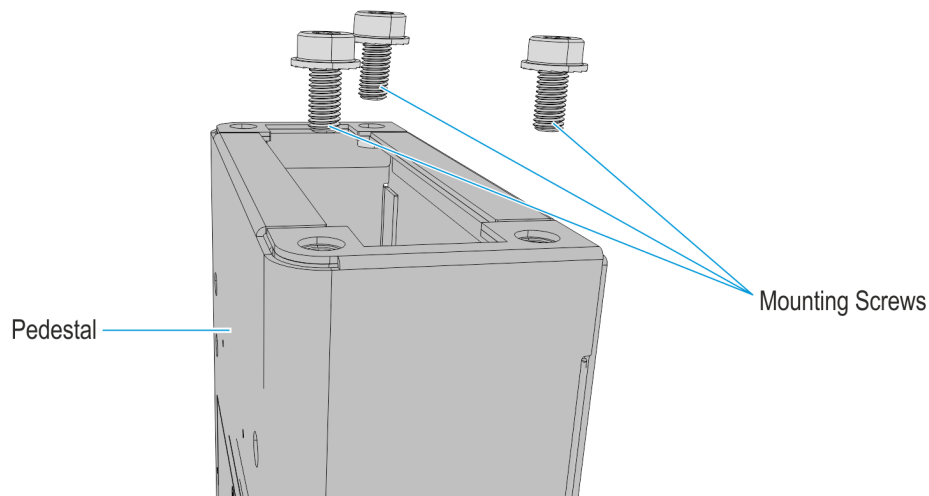
Length: **76 mm** (3 in.)

Allen Key Size for Bolt Head: **8mm** (5/16 in.)

CCP-60896

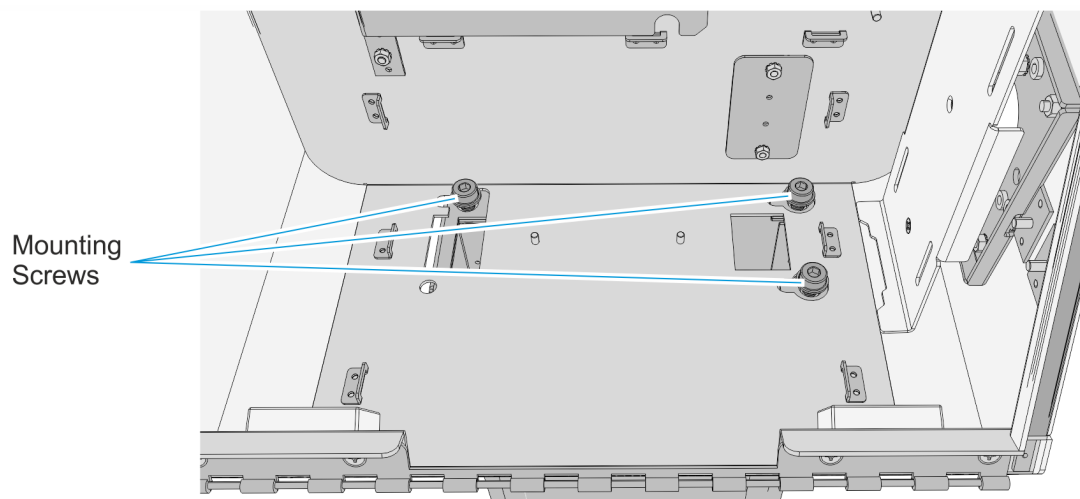
4. Drill the holes (4) in the floor as needed for the anchors being used.
5. Position the pedestal back in the installed location and install the four anchors. Make sure that the anchors do not extend up above the top of the Pedestal Base more than 12.7 mm (0.5 in.).
6. Install the Pedestal Base Cover and secure it with screws (4).

7. Install the Mounting Screws (3) on the pedestal. Do not tighten the Mounting Screws, leave room for the kiosk cabinet to slide under the screw heads or lock-washers. Use a 6 mm (15/64 in.) Allen Key to drive the screws.



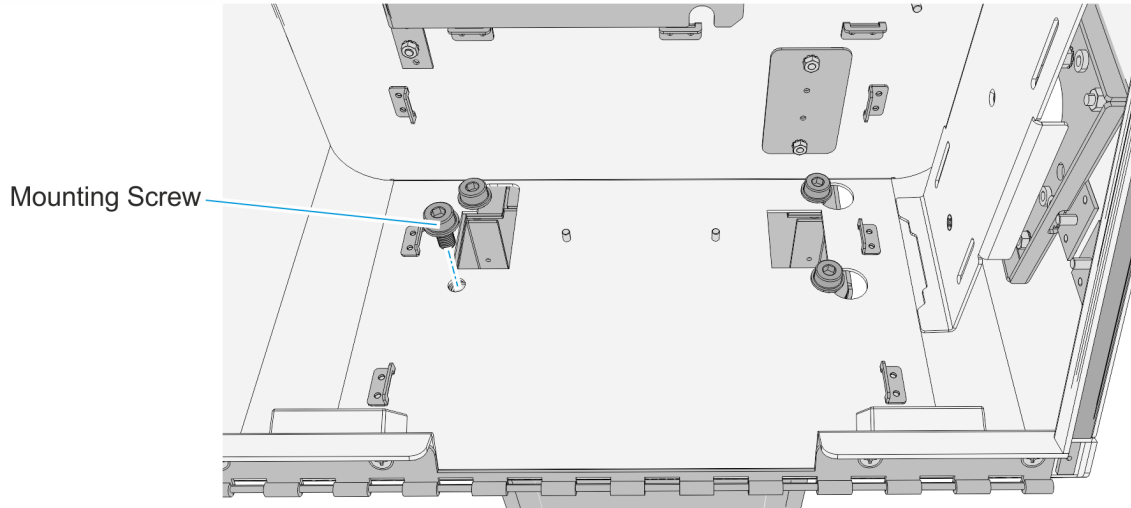
60895

8. Position the kiosk on top of the pedestal with the Mounting Screws (3) extending up through the keyholes in the bottom of the kiosk cabinet. Slide the kiosk to the right.



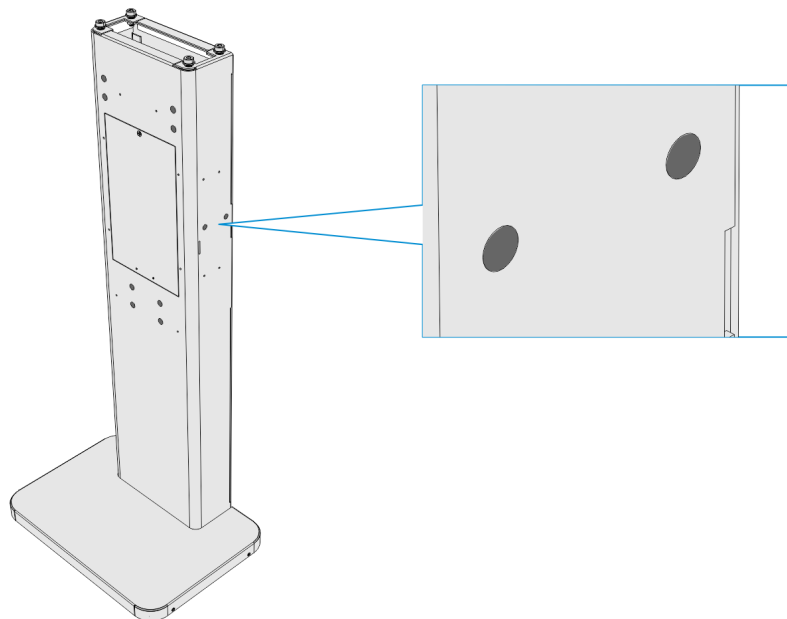
60894

9. Install Mounting Screw (1) through the remaining mounting hole. Tighten all Mounting Screws (4).



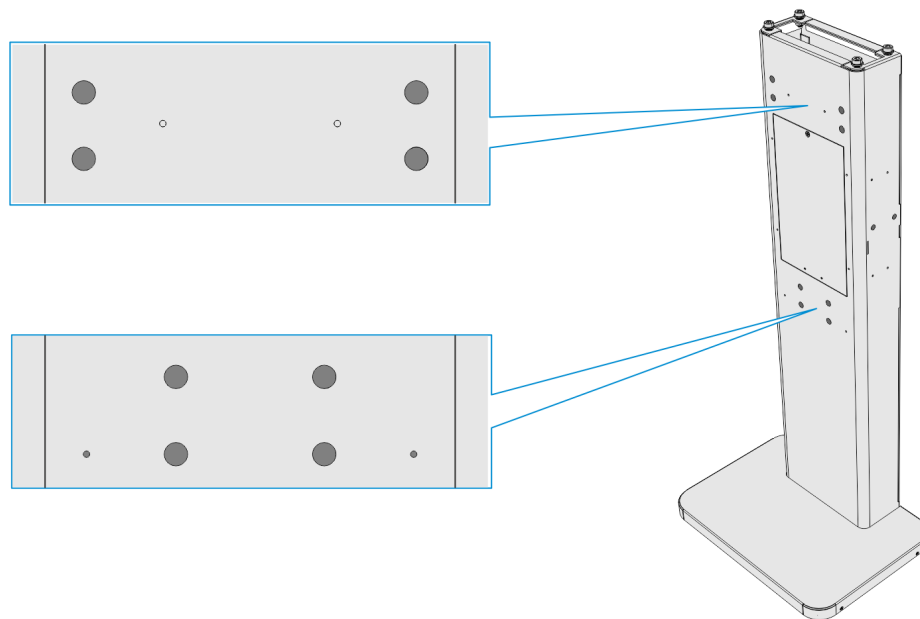
60893

10. Cover the following mounting holes using the SS90 Hole Cover Label if there are no side shelves, front shelf, or bagger to be installed to the pedestal.
- Side mounting holes** - cover holes if the side shelf kits, 7709-K432 (Narrow Shelf) or 7709-K433 (Wide Shelf), will not be installed to the pedestal. There are two (2) mounting holes on the left and right side of the pedestal.



CCP-60871

- b. **Front mounting holes** - cover holes if kit 7709-K434 (Bagger with Shelf) will not be installed. There are four (4) mounting holes each for the bagger and shelf.



CCP-60872