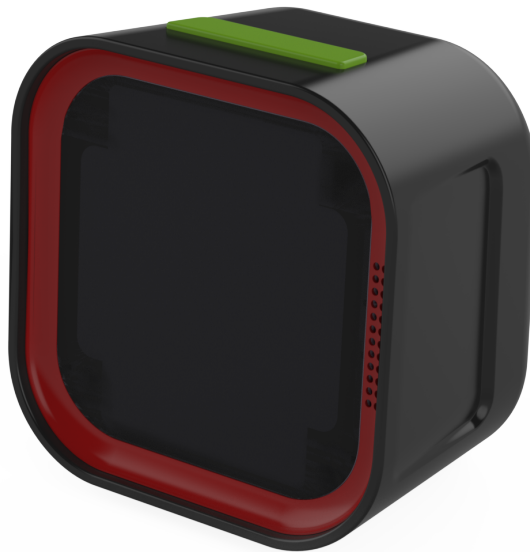


# Kit Instructions

Scanner (Datalogic Magellan 1500i)



7707-K255  
Issue C



---

The product described in this document is a licensed product of NCR Corporation.

NCR is a registered trademark of NCR Corporation. NCR SelfServ™ Checkout is a trademark of NCR Corporation in the United States and/or other countries. Other product names mentioned in this publication may be trademarks or registered trademarks of their respective companies and are hereby acknowledged.

Where creation of derivative works, modifications or copies of this NCR copyrighted documentation is permitted under the terms and conditions of an agreement you have with NCR, NCR's copyright notice must be included.

It is the policy of NCR Corporation (NCR) to improve products as new technology, components, software, and firmware become available. NCR, therefore, reserves the right to change specifications without prior notice.

All features, functions, and operations described herein may not be marketed by NCR in all parts of the world. In some instances, photographs are of equipment prototypes. Therefore, before using this document, consult with your NCR representative or NCR office for information that is applicable and current.

Copyright © 2023  
By NCR Corporation  
864 Spring St. NW  
Atlanta, GA 30308  
United States  
All Rights Reserved

---

## Revision Record

Issue	Date	Remarks
A	Apr 2021	First Issue
B	Aug 2022	Updated <a href="#">Scanner (Datalogic Magellan 1500i)</a> on page 1.
C	May 2023	Updated <a href="#">Installation Procedures</a> on page 3.



---

# Scanner (Datalogic Magellan 1500i)

---

This publication provides procedures for installing a Datalogic Magellan 1500i Scanner on any of the following units:

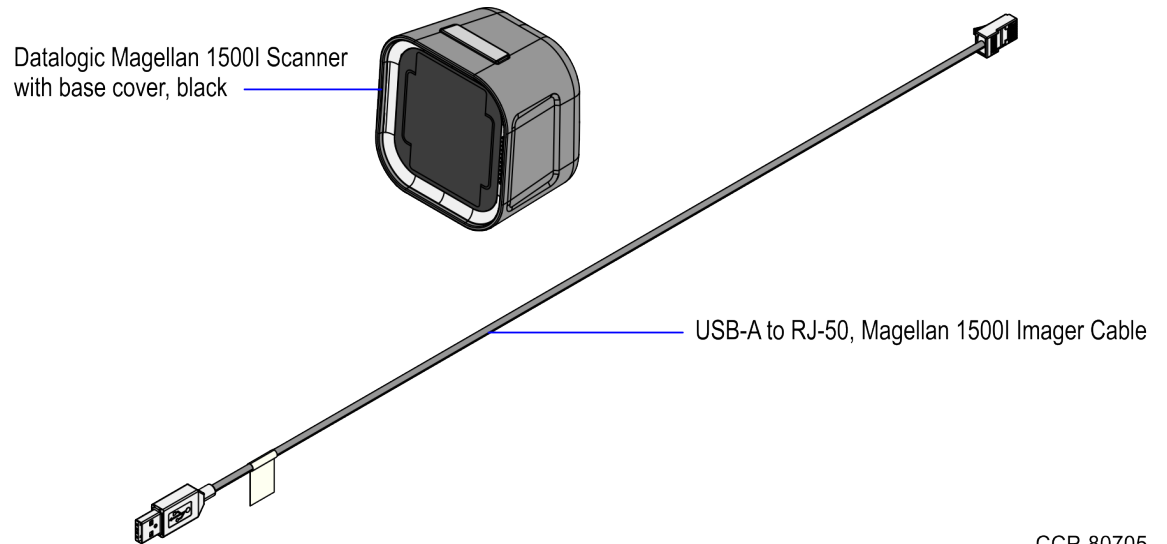
- NCR SelfServ™ Checkout (7707)
- NCR SelfServ™ Checkout (7350)
- Third Party Kiosks

## Prerequisites

The *7707-K255 Scanner (Datalogic Magellan 1500i)* must be ordered together with any of the following kits, depending on where the scanner should be installed.

- *7707-K908 Scanner Mount Assembly (Datalogic Magellan 1500i)*
- *7707-K909 Scanner Bracket with Black Mount Assembly (Datalogic Magellan 1500i)*
- *7350-K989 Scanner Mount Assembly (Datalogic Magellan 1500i)*
- *7884-K900 Box Mount Assembly (Datalogic Magellan 1500i)*

## Kit Contents



Part Number	Description
497-0530547	KIT - 7707-K255 Datalogic 1500i Scanner (Scanner & 1.5 M Cable)
497-0533445	Scanner, Datalogic Magellan 1500i With Base Cover, Black, FW Ver. 3
497-0528834	Cable, USB-A to RJ-50, Magellan 1500i Imager, 1500 mm

\* Items marked with an asterisk are not called out on the image.

## Installation Procedures

The 7707-K255 Scanner (Datalogic Magellan 1500i) is ordered together with a Scanner Mount Assembly Kit. For more information on how to install the Datalogic Magellan 1500i Scanner, refer to any of the following Scanner Mount Assembly Kit Instructions:



**Note:** The Scanner Mount Assembly Kit depends on where the assembly should be installed.

SelfServ Checkout/Third Party Units	Kit Instructions
NCR SelfServ™ Checkout (7707)	<ul style="list-style-type: none"> <li>• 7707-K908 Scanner Mount Assembly (Datalogic Magellan 1500i)</li> <li>• 7707-K909 Scanner Bracket with Black Mount Assembly (Datalogic Magellan 1500i)</li> </ul>
NCR SelfServ™ Checkout(7350)	7350-K989 Scanner Mount Assembly (Datalogic Magellan 1500i)
Third Party Kiosks	7884-K900 Box Mount Assembly (Datalogic Magellan 1500i)

