

Kit Instructions

Japan Goods Holder



7707-K462
Issue A



The product described in this document is a licensed product of NCR Corporation.

NCR is a registered trademark of NCR Corporation. NCR SelfServ™ Checkout is a trademark of NCR Corporation in the United States and/or other countries. Other product names mentioned in this publication may be trademarks or registered trademarks of their respective companies and are hereby acknowledged.

The terms HDMI and HDMI High-Definition Multimedia Interface, and the HDMI Logo are trademarks or registered trademarks of HDMI Licensing LLC in the United States and other countries.

Where creation of derivative works, modifications or copies of this NCR copyrighted documentation is permitted under the terms and conditions of an agreement you have with NCR, NCR's copyright notice must be included.

It is the policy of NCR Corporation (NCR) to improve products as new technology, components, software, and firmware become available. NCR, therefore, reserves the right to change specifications without prior notice.

All features, functions, and operations described herein may not be marketed by NCR in all parts of the world. In some instances, photographs are of equipment prototypes. Therefore, before using this document, consult with your NCR representative or NCR office for information that is applicable and current.

To maintain the quality of our publications, we need your comments on the accuracy, clarity, organization, and value of this book. Please use the link below to send your comments.

Email: FD230036@ncr.com

Copyright © 2018
By NCR Corporation
Duluth, GA U.S.A.
All Rights Reserved

Revision Record

Issue	Date	Remarks
A	Jun 2018	First Issue

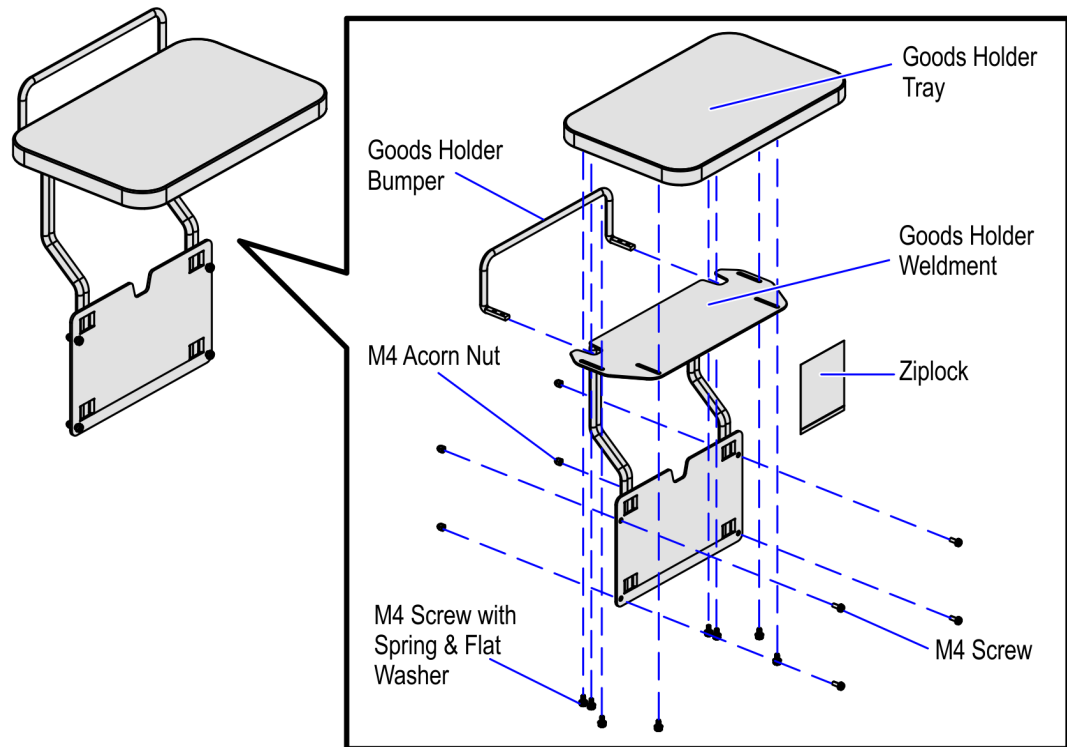
Japan Goods Holder

This publication provides procedures for installing a Japan Goods Holder on the Scale Tray of an NCR SelfServ™ Checkout (7707) R6-Japan unit.



Note: The 7707-K462 Japan Goods Holder Kit requires a Japan Bag Rack with Arm Flap. For more information, refer to the 7707-K461 Japan Bag Rack with Arm Flap Kit.

Kit Contents



CCP-74443

Part Number	Description
497-0510937	7707-K462 Japan Good's Holder
497-0510301	Goods Holder Weldment
497-0510297	Goods Holder Tray
497-0510364	Goods Holder Bumper
497-0470565	Ziplock
006-8624915	M4 Screw with Spring and Flat Washer (8pcs)
009-0006593	M4 Screw (4pcs)
006-8624370	M4 Acorn Nut (4pcs)
* 497-0510997	Japan Goods Holder Packaging Box

* Items marked with an asterisk are not called out on the image.

Installation Procedures

Installing the Goods Holder on the Scale Tray of an R6-Japan unit involves the following procedures:



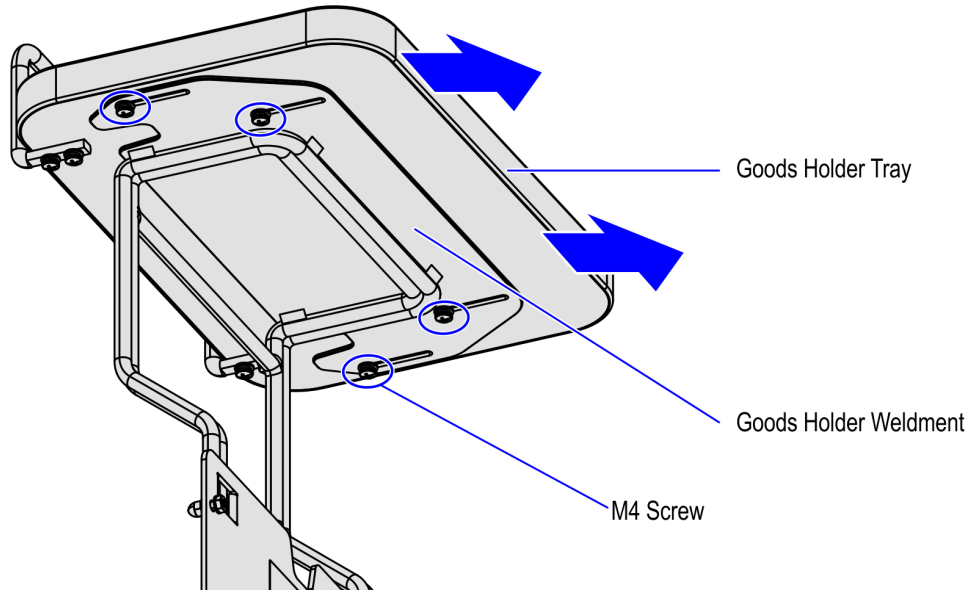
Note: These procedures assume that the Bag Rack is not yet installed on the Scale Tray.

- A. Install the Japan Goods Holder on the Bag Rack. For more information, refer to [*Installing Japan Goods Holder on Japan Bag Rack*](#) on the next page.
- B. Install the Japan Bag Rack with Japan Goods Holder on the Scale Tray. For more information, refer to [*Installing Japan Bag Rack Assembly*](#) on page 7.

Installing Japan Goods Holder on Japan Bag Rack

To install the Japan Goods Holder on the Japan Bag Rack, follow these steps:

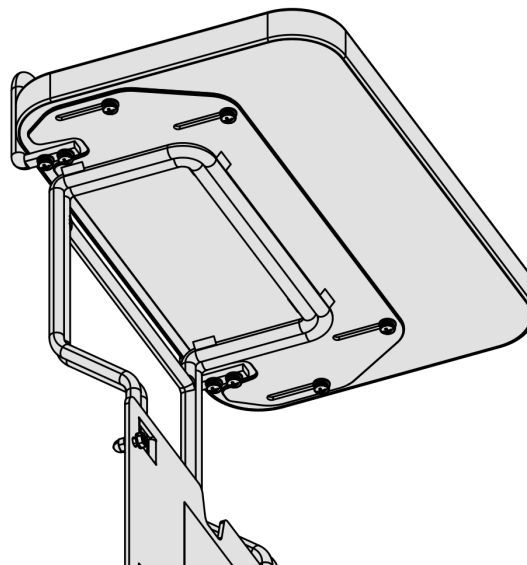
1. Loosen four M4 screws, and then pull the Goods Holder Tray forward.



CCP-74445



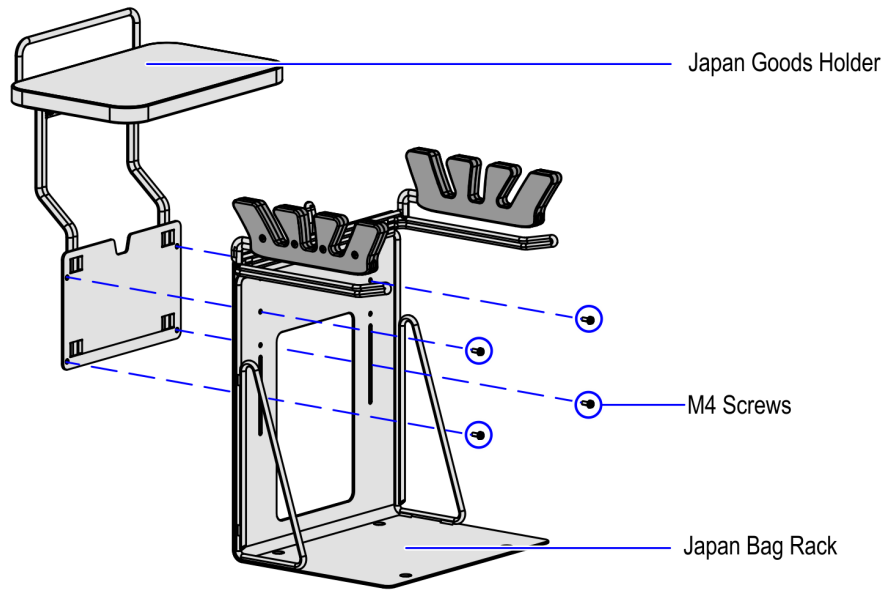
Note: The default Goods Holder Tray configuration should be fully extended forward as shown in the image below.



CCP-74444

2. Tighten all four screws to secure the Goods Holder Tray to the Goods Holder Weldment.

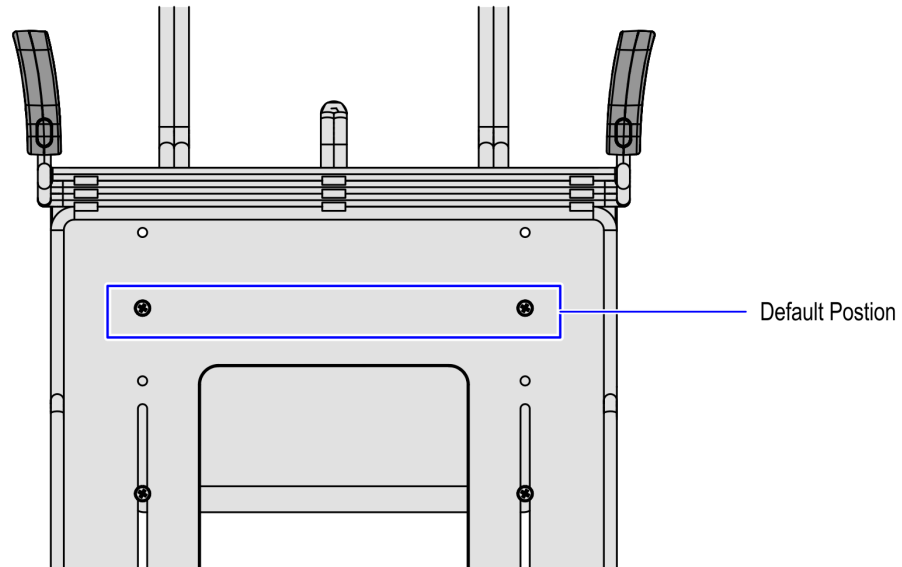
3. Attach the Goods Holder to the Japan Bag Rack using four M4 screws.



CCP-74447

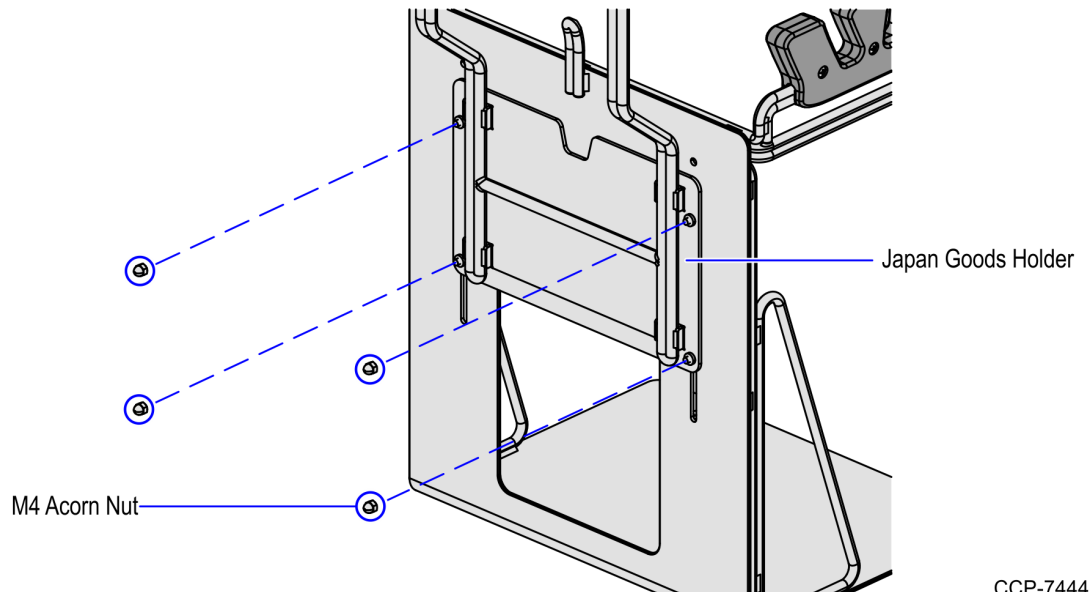


Note: The Goods Holder height can be adjusted in three positions, the default position should be set at the middle as shown in the image below.



CCP-74446

- Secure the Goods Holder to the Bag Rack using four M4 acorn nuts as shown in the image below.

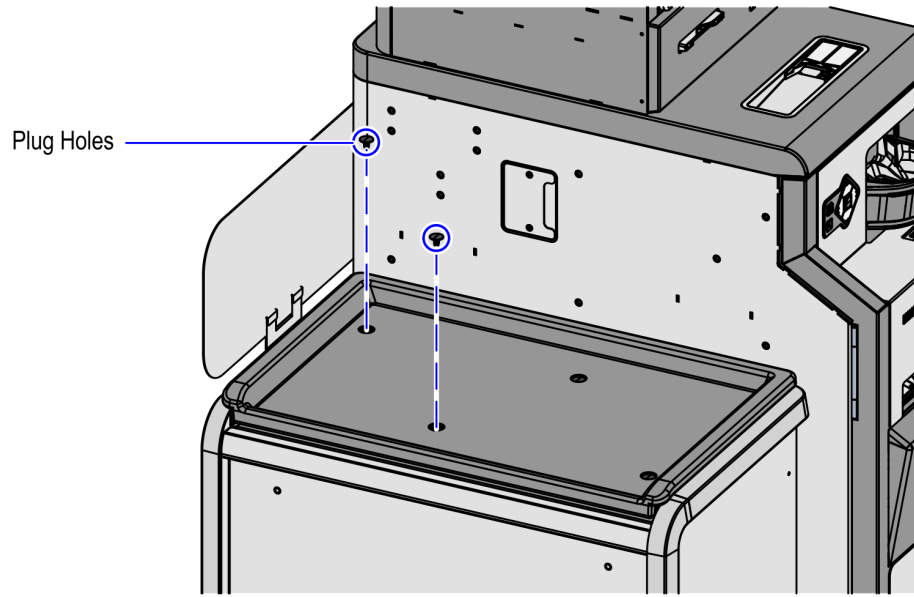


- If the Japan Bag Rack is not yet installed on the Scale Tray, install the Bag Rack assembly on the Scale Tray. For more information, refer to [Installing Japan Bag Rack Assembly](#) on the facing page.

Installing Japan Bag Rack Assembly

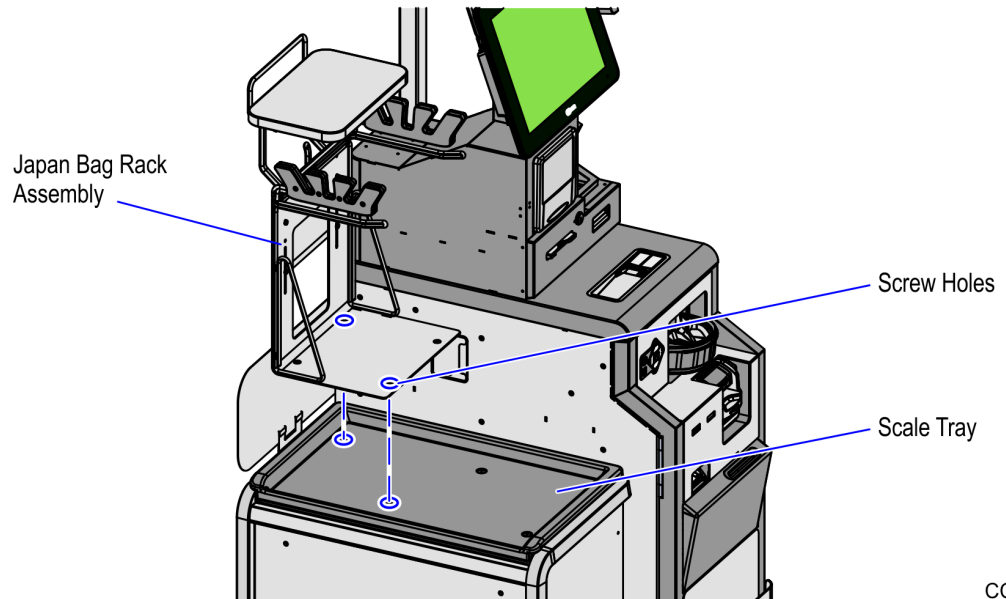
To install Japan Bag Rack with Goods Holder on the Scale Tray, follow these steps:

1. Install the Japan Goods Holder on the Japan Bag Rack. For more information, refer to [Installing Japan Goods Holder on Japan Bag Rack](#) on page 4.
2. Remove plug holes from the Scale Tray.



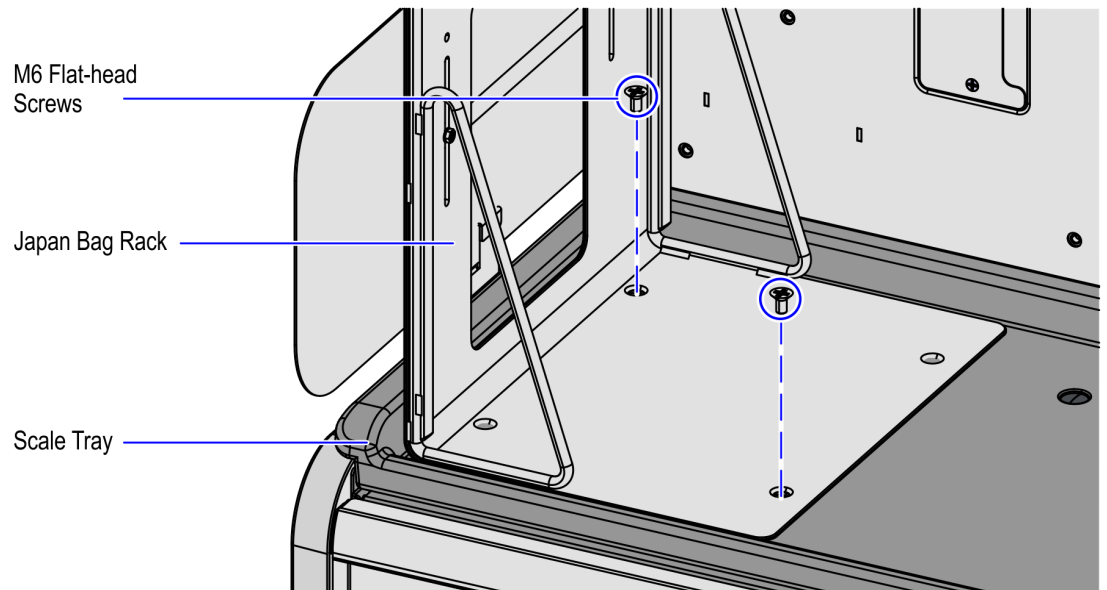
CCP-74449

3. Align the Japan Bag Rack assembly with the two screw holes on the Scale Tray.



CCP-74450

4. Secure the Japan Bag Rack to the Scale Tray using two M6 Flat-head screws.



CCP-74451