

# Kit Instructions

Plastic Adapter, Black

5977-K901  
Issue A



---

The product described in this document is a licensed product of NCR Corporation.

NCR is a registered trademark of NCR Corporation. Product names mentioned in this publication may be trademarks or registered trademarks of their respective companies and are hereby acknowledged.

Where creation of derivative works, modifications or copies of this NCR copyrighted documentation is permitted under the terms and conditions of an agreement you have with NCR, NCR's copyright notice must be included.

It is the policy of NCR Corporation (NCR) to improve products as new technology, components, software, and firmware become available. NCR, therefore, reserves the right to change specifications without prior notice.

All features, functions, and operations described herein may not be marketed by NCR in all parts of the world. In some instances, photographs are of equipment prototypes. Therefore, before using this document, consult with your NCR representative or NCR office for information that is applicable and current.

To maintain the quality of our publications, we need your comments on the accuracy, clarity, organization, and value of this book. Please use the link below to send your comments.

Email: [FD230036@ncr.com](mailto:FD230036@ncr.com)

Copyright © 2020  
By NCR Corporation  
Global Headquarters  
864 Spring St NW  
Atlanta, GA 30308  
U.S.A.  
All Rights Reserved

---

# Table of Contents

## *Plastic Adapter, Black*

Introduction .....	1
Kit Contents .....	1
Installation Procedures .....	2
Using Cable Management Bracket .....	2
Using Strain Relief Bracket .....	6

## Revision Record

Issue	Date	Remarks
A	June 2020	First Issue

---

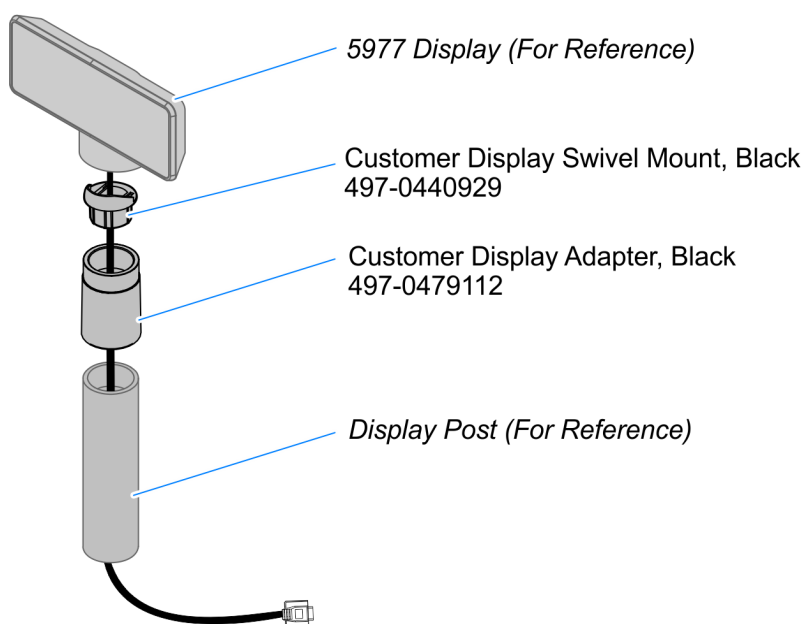
# Plastic Adapter, Black

---

## Introduction

This kit provides a black Plastic Adapter with black Swivel Mount to mount the 5977 Customer Display on a Wincor pole.

## Kit Contents



CCP-79061

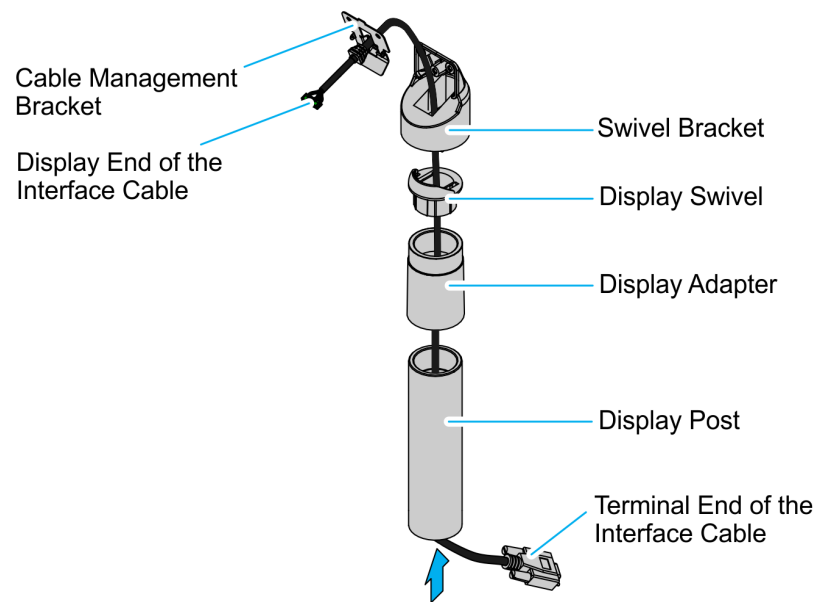
## Installation Procedures

Install the Post Mount, the Display Assembly, and the Interface Cable. Follow the procedures that correspond to the type of cable bracket used.

- For **Cable Management Bracket**, refer to [Using Cable Management Bracket](#) below.
- For **Strain Relief Bracket**, refer to [Using Strain Relief Bracket](#) on page 6.

### Using Cable Management Bracket

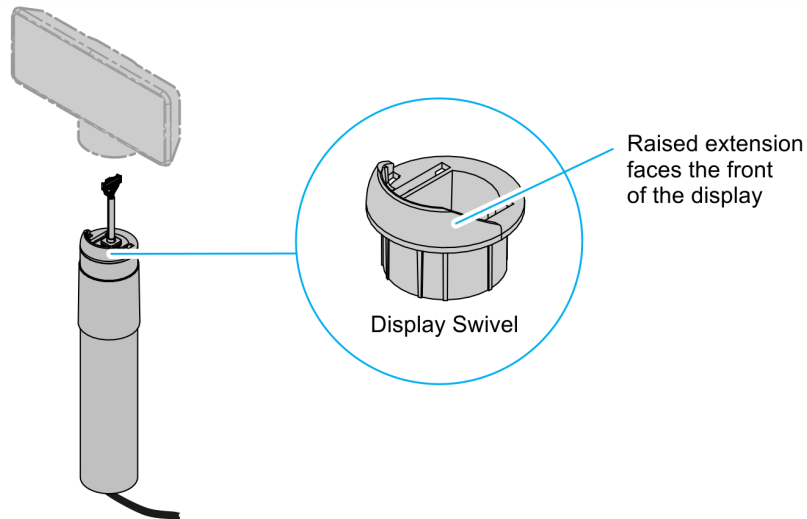
1. Route the display end of the Interface Cable through the Display Post, the Display Adapter, the Display Swivel, the Swivel Bracket, and the Cable Management Bracket.



2. Assemble the post components.

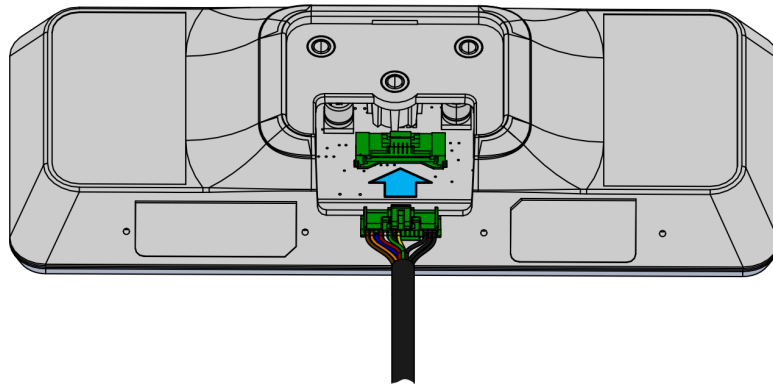


**Note:** The raised extension of the Display Swivel is facing the front of the unit, which permits the Display to be tilted towards the back.



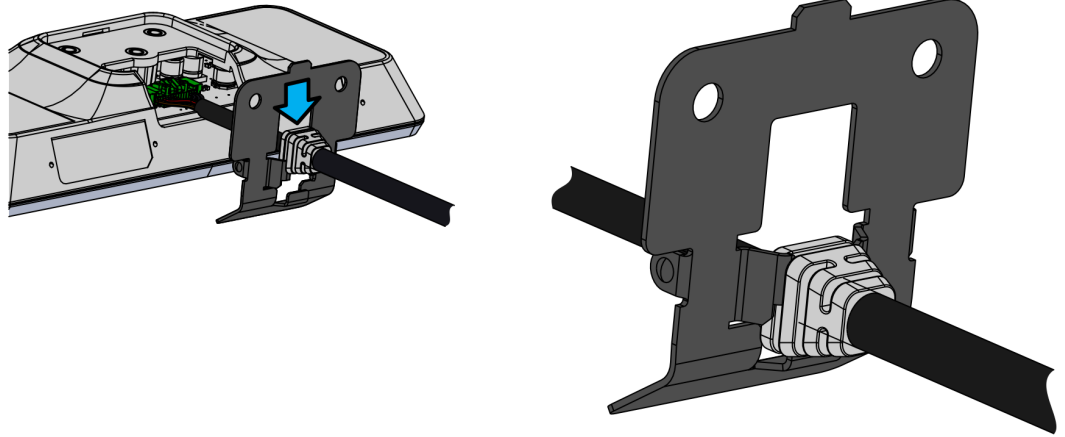
CCP-79063

3. Connect the Interface Cable to the Display Module connector until the latch is engaged. Ensure that the latch is properly engaged by gently tugging on the cable.



CCP-70303

- Slide the grooves of the Cable Overmold onto the tabs of the Cable Management Bracket.



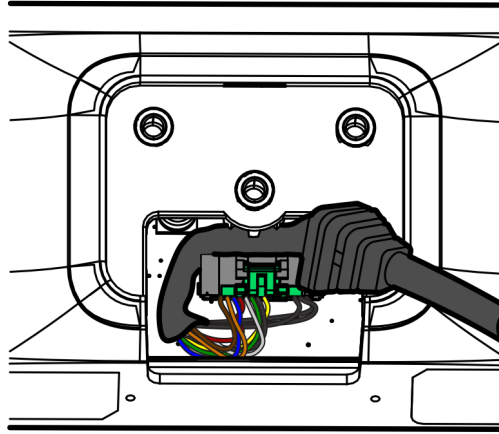
CCP-70304



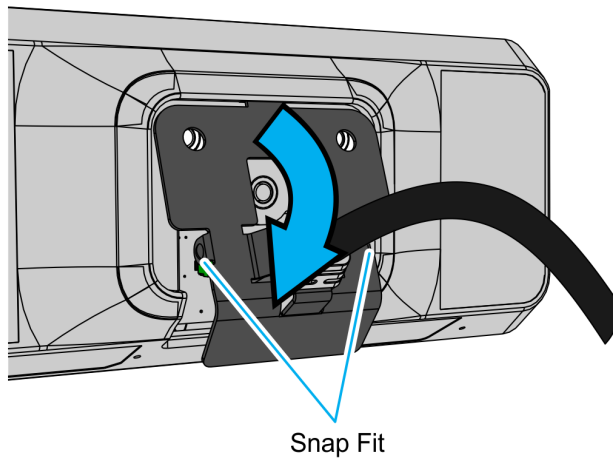
5. Route the excess cable to the right and around the board connector and install the Cable Management Bracket. Insert the tab of the Cable Management Bracket into the slot in the Rear Cover. Pivot the bracket as shown until it snaps into position.



**Note:** Ensure that the cables are not pinched when installing the bracket.

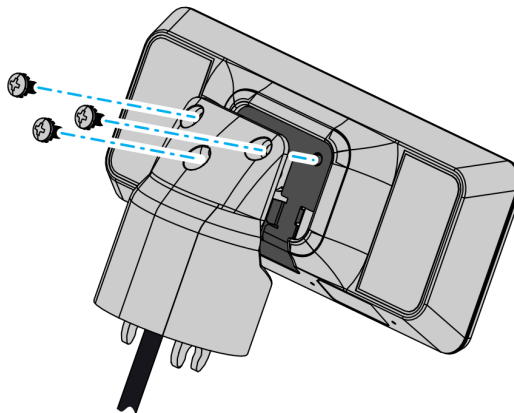


CCP-70308



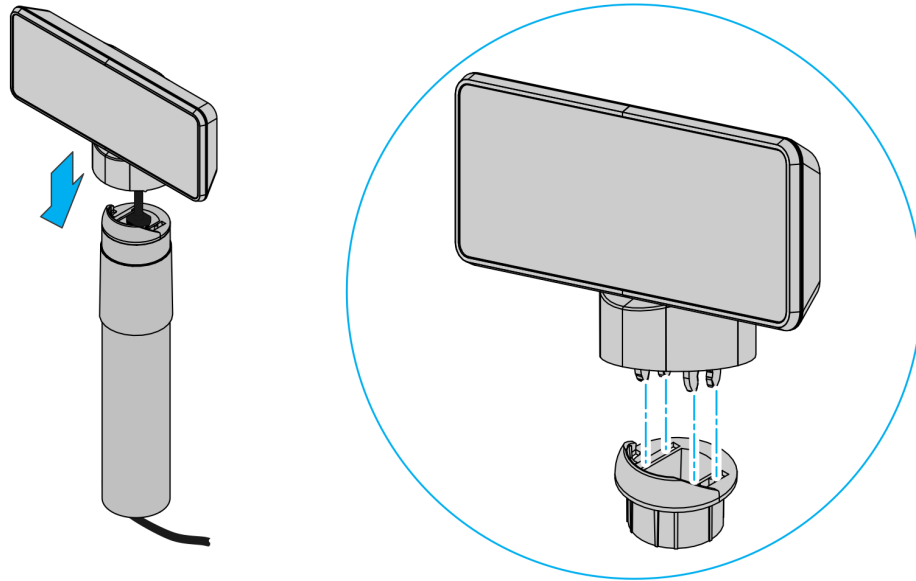
CCP-70305

6. Install the Swivel Bracket by using the three M4x8 screws.



CCP-70306

7. Connect the display to the post assembly.



CCP-79064

8. Connect the terminal end of the Display Cable to the host terminal.

- **RS-232 Interface (Powered)**

Connect the I/F cable to a powered RS-232 connector on the terminal.

Configure the terminal serial port as follows:

9600 baud, 8 data bits, 1 start bit, 1 stop bit, No parity

- **USB Interface (Powered)**

Connect the I/F cable to a powered 12V USB + Power connector on the terminal.

- **USB Interface (Non-Powered)**

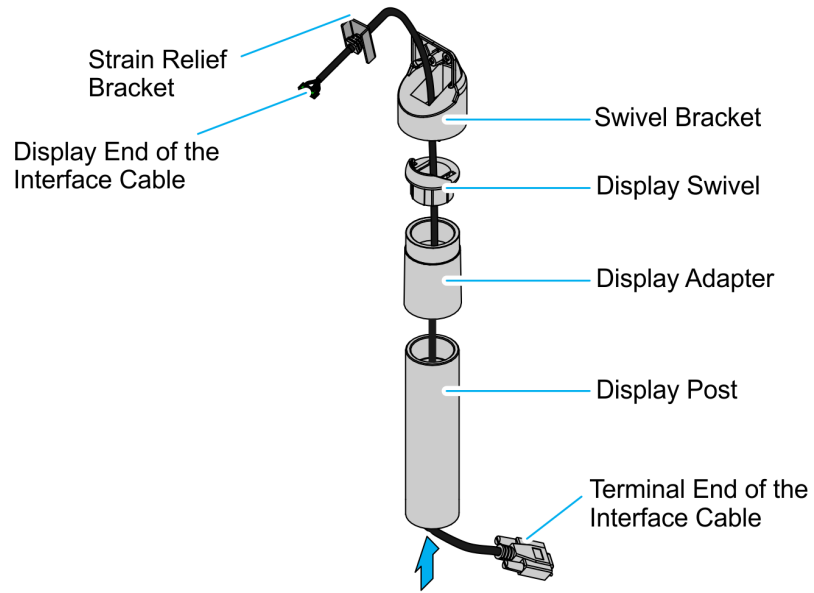
Connect the I/F cable to a non-powered USB connector on the terminal. Connect a Power Brick to the I/F cable and an AC outlet.

## Using Strain Relief Bracket

1. Route the display end of the Interface Cable through the Display Post, the Display Adapter, the Display Swivel, and the Swivel Bracket.



**Note:** The Strain Relief Bracket may be installed later.

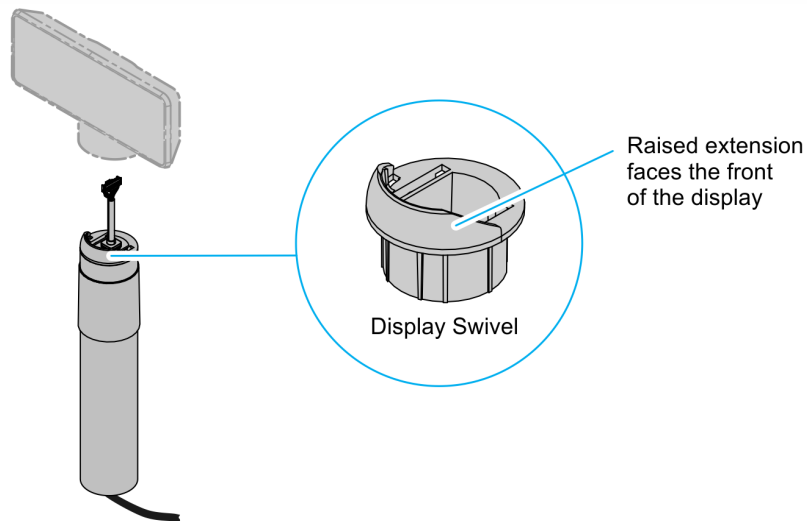


CCP-79065

2. Assemble the post components.

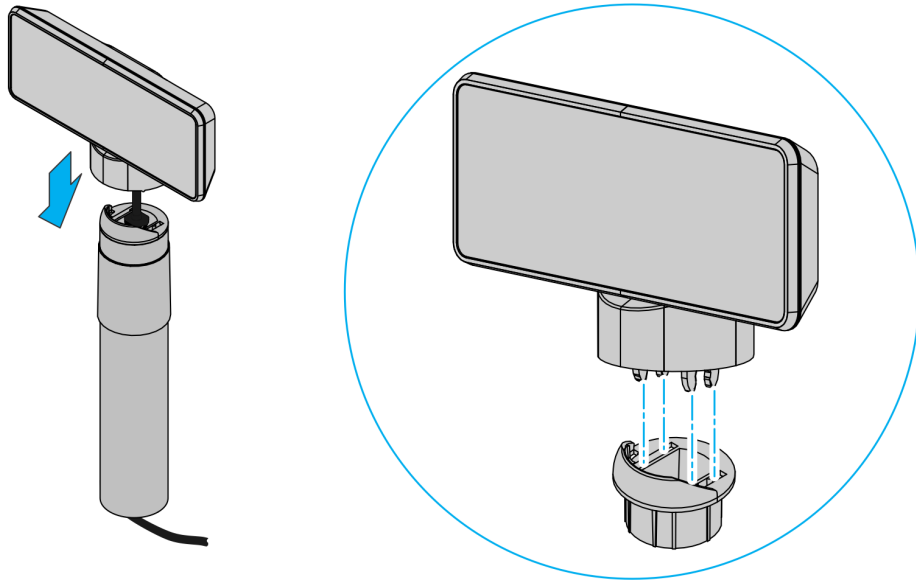


**Note:** The raised extension of the Display Swivel is facing the front of the unit, which permits the Display to be tilted towards the back.



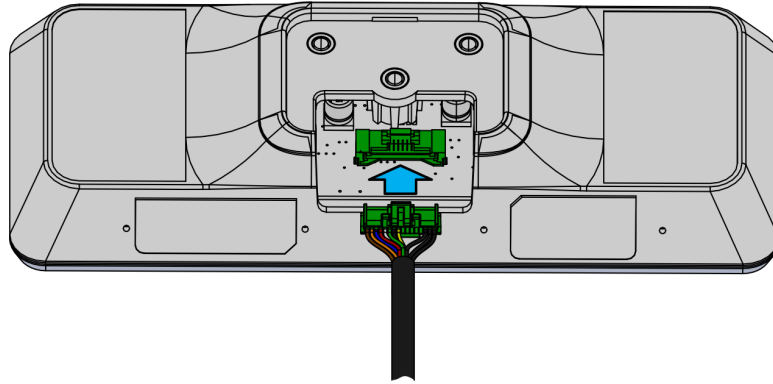
CCP-79063

3. Attach the Swivel Bracket to the Display Swivel.

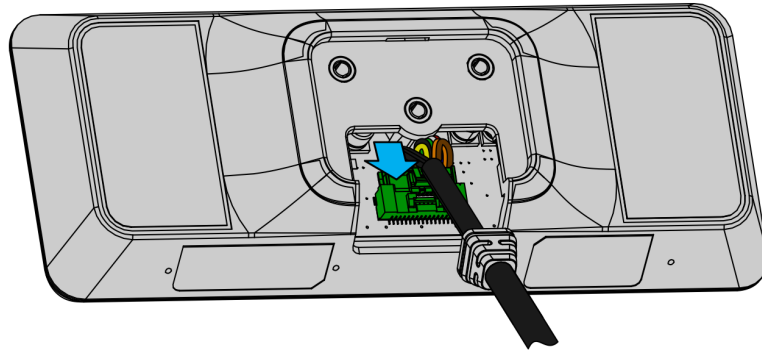


CCP-79064

4. Connect the Interface Cable to the Display Module connector until the latch is engaged. Ensure that the latch is properly engaged by gently tugging on the cable.

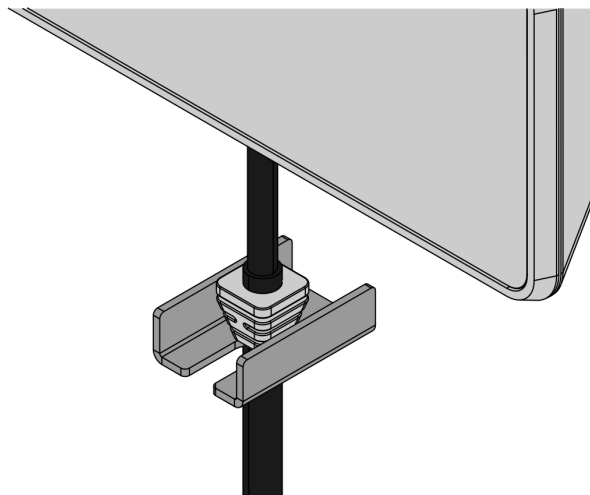
**5977-1000**

CCP-70303

**5977-2000**

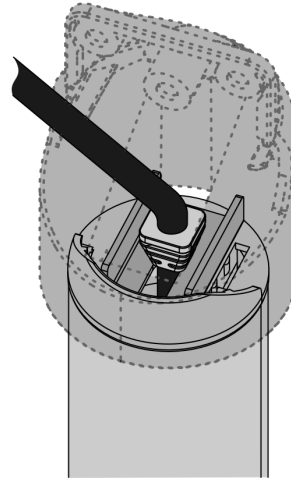
CCP-70108

5. Attach the Strain Relief Bracket.
  - a. Attach the Strain Relief Bracket to the cable, right below the Cable Overmold.



CCP-70105

- b. Carefully pull the cable down so the Strain Relief Bracket fits in the middle of the Swivel Bracket and rests on top of the Display Swivel.

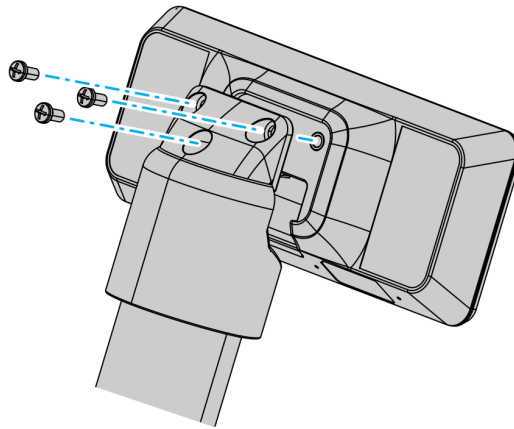


CCP-70106

6. Attach the display to the Swivel Bracket by using the three M4x8 screws.



**Note:** Ensure that no cables are pinched.



CCP-70107

7. Connect the terminal end of the Display Cable to the host terminal.
  - **RS-232 Interface (Powered)**

Connect the I/F cable to a powered RS-232 connector on the terminal.

Configure the terminal serial port as follows:

9600 baud, 8 data bits, 1 start bit, 1 stop bit, No parity
  - **USB Interface (Powered)**

Connect the I/F cable to a powered 12V USB + Power connector on the terminal.
  - **USB Interface (Non-Powered)**

Connect the I/F cable to a non-powered USB connector on the terminal. Connect a Power Brick to the I/F cable and an AC outlet.