

Kit Instructions

N3000 Rack Mount Bracket

1657-K001
Issue A



The product described in this document is a licensed product of NCR Corporation.

NCR is a registered trademark of NCR Corporation. Product names mentioned in this publication may be trademarks or registered trademarks of their respective companies and are hereby acknowledged.

The terms HDMI and HDMI High-Definition Multimedia Interface, and the HDMI Logo are trademarks or registered trademarks of HDMI Licensing LLC in the United States and other countries.

Where creation of derivative works, modifications or copies of this NCR copyrighted documentation is permitted under the terms and conditions of an agreement you have with NCR, NCR's copyright notice must be included.

It is the policy of NCR Corporation (NCR) to improve products as new technology, components, software, and firmware become available. NCR, therefore, reserves the right to change specifications without prior notice.

All features, functions, and operations described herein may not be marketed by NCR in all parts of the world. In some instances, photographs are of equipment prototypes. Therefore, before using this document, consult with your NCR representative or NCR office for information that is applicable and current.

To maintain the quality of our publications, we need your comments on the accuracy, clarity, organization, and value of this book. Please use the link below to send your comments.

Email: FD230036@ncr.com

Copyright © 2018
By NCR Corporation
Atlanta, GA U.S.A.
All Rights Reserved

Table of Contents

N3000 Rack Mount Bracket

Introduction	1
Kit Components	1
Required Tools	1
Installation Procedures	2

Revision Record

Issue	Date	Remarks
A	Jun 2018	First Issue

N3000 Rack Mount Bracket

Introduction

The Rack Mount Bracket kit provides a solution for mounting the NCR N3000 Site Controller on a rack.

Kit Components

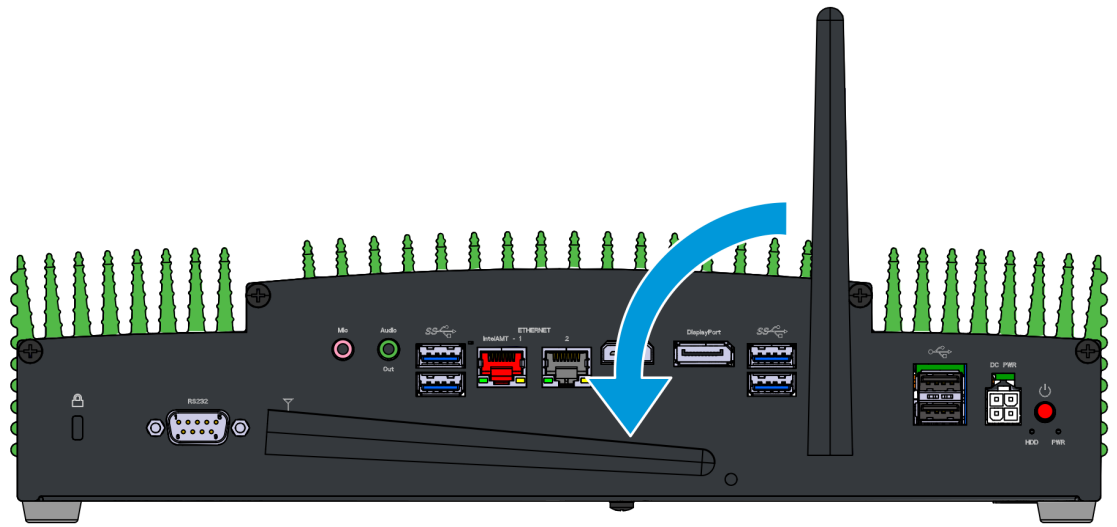
Part Number	Description
497-0478366	N3000 19-inch Rack Mount Bracket
497-0480060	(4) #6-32 x 0.23in Step Pan Head Flat Screw
497-0480061	(2) #6-32 x 0.3120in Machine Phillips Pan Head, SEMS, Black

Required Tools

- Phillips screwdriver
- Cable ties as needed

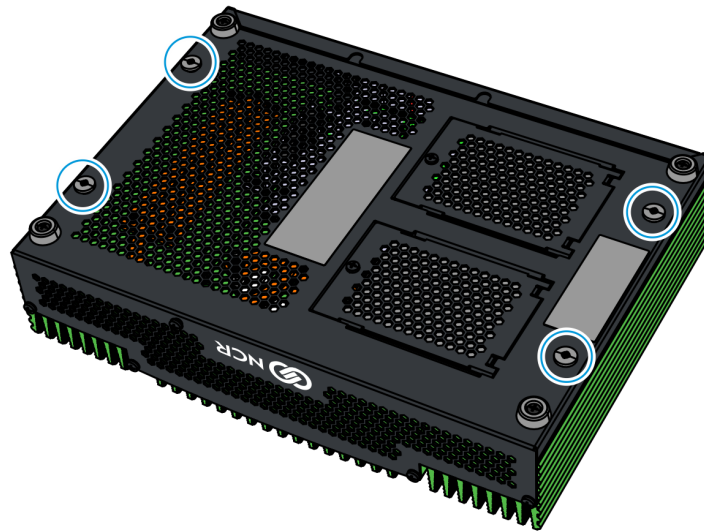
Installation Procedures

1. If applicable, rotate the antennas so that they are parallel to the N3000.



CCP-74169

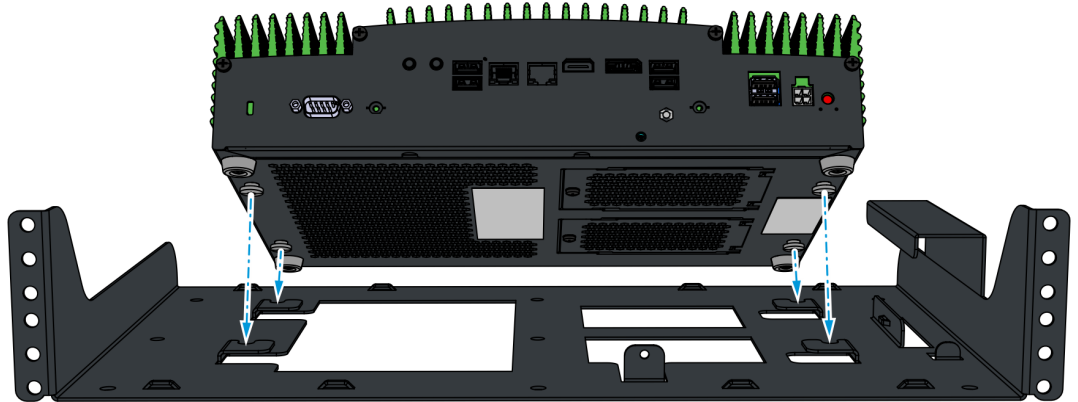
2. Lay the N3000 face down on a flat surface.
3. Insert the four Step Pan Head Flat Screws into the hole locations marked with a **W**.



CCP-74120

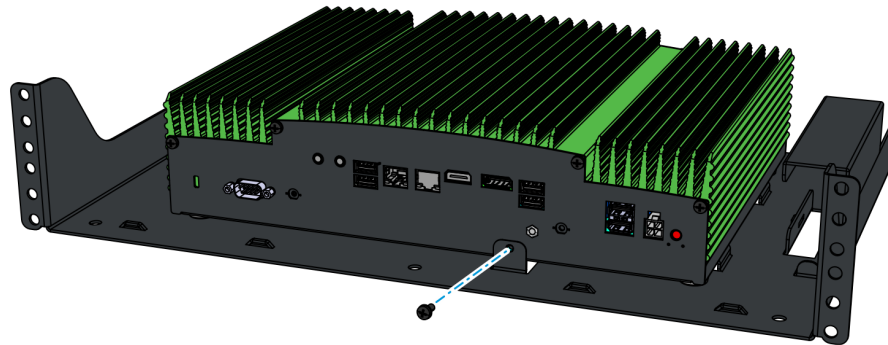
4. Position the N3000 so that its ports are facing forward, mount the four Step Pan Head Flat Screws onto the Rack Mount Bracket, and slide the N3000 forward to lock it in place.

 **Caution:** Ensure that all four screws are fully inserted into the bracket.




CCP-74124

5. Secure the N3000 with the included security screw.



CCP-74125

6. Insert the Power Supply into the power supply pocket on the bracket.

 **Note:** Route and tie the power cord in place as needed.



CCP-74126

