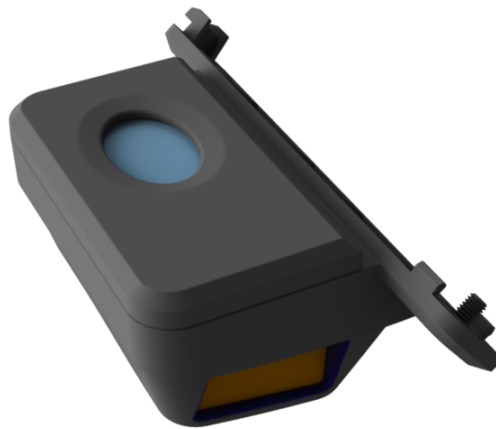


# KIT INSTRUCTIONS

## Biometrics with Biokey with 2D Scanner

Release 1.0



9700-0008-7761

Issue A



The product described in this document is a licensed product of NCR Corporation.

NCR is a registered trademark of NCR Corporation. Product names mentioned in this publication may be trademarks or registered trademarks of their respective companies and are hereby acknowledged.

The terms HDMI and HDMI High-Definition Multimedia Interface, and the HDMI Logo are trademarks or registered trademarks of HDMI Licensing LLC in the United States and other countries.

Where creation of derivative works, modifications or copies of this NCR copyrighted documentation is permitted under the terms and conditions of an agreement you have with NCR, NCR's copyright notice must be included.

It is the policy of NCR Corporation (NCR) to improve products as new technology, components, software, and firmware become available. NCR, therefore, reserves the right to change specifications without prior notice.

All features, functions, and operations described herein may not be marketed by NCR in all parts of the world. In some instances, photographs are of equipment prototypes. Therefore, before using this document, consult with your NCR representative or NCR office for information that is applicable and current.

To maintain the quality of our publications, we need your comments on the accuracy, clarity, organization, and value of this book. Please use the link below to send your comments.

*Email:* [FD230036@ncr.com](mailto:FD230036@ncr.com)

Copyright © 2016–2017

By NCR Corporation

Duluth, GA U.S.A.

All Rights Reserved

## Revision Record

Issue	Date	Remarks
A	Aug 2016	First Issue

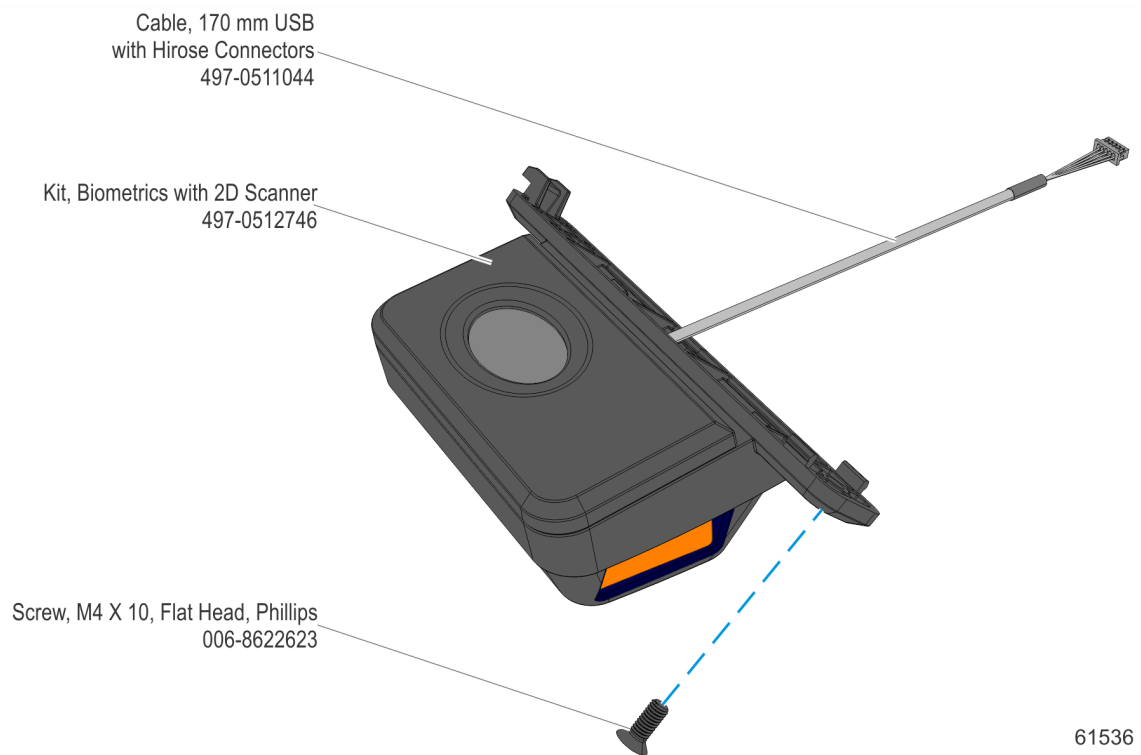
---

# Biometrics with Biokey with 2D Scanner

---

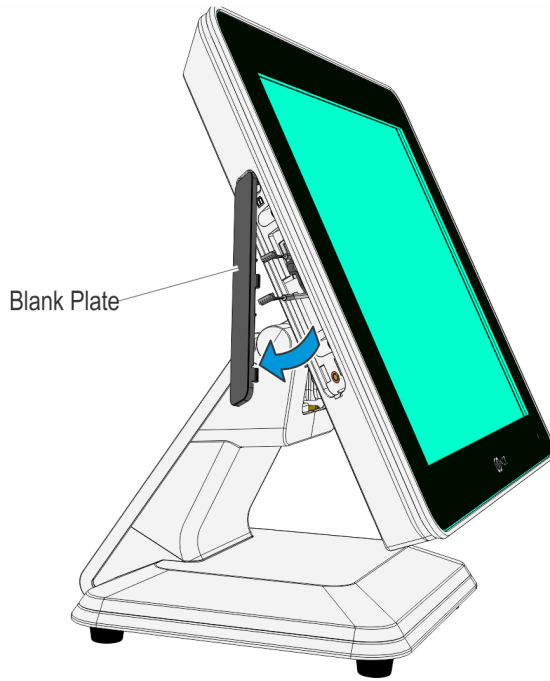
## Introduction

This kit provides the components to add a Biometrics with Biokey with 2D Scanner.



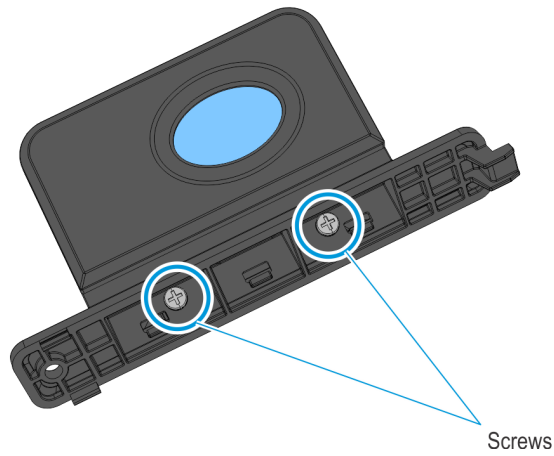
# Installation Procedure

1. Remove the Blank Plate, if any, from the rear housing.



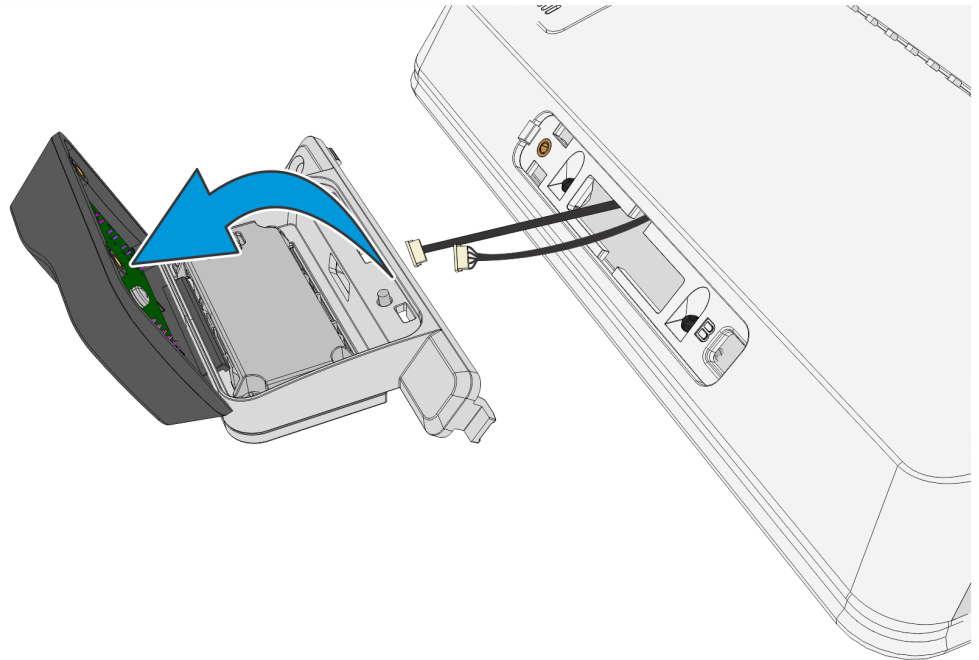
60429

2. Disengage the 2D Scanner from the biometrics.
  - a. Remove the screws (2) that secure the 2D Scanner.



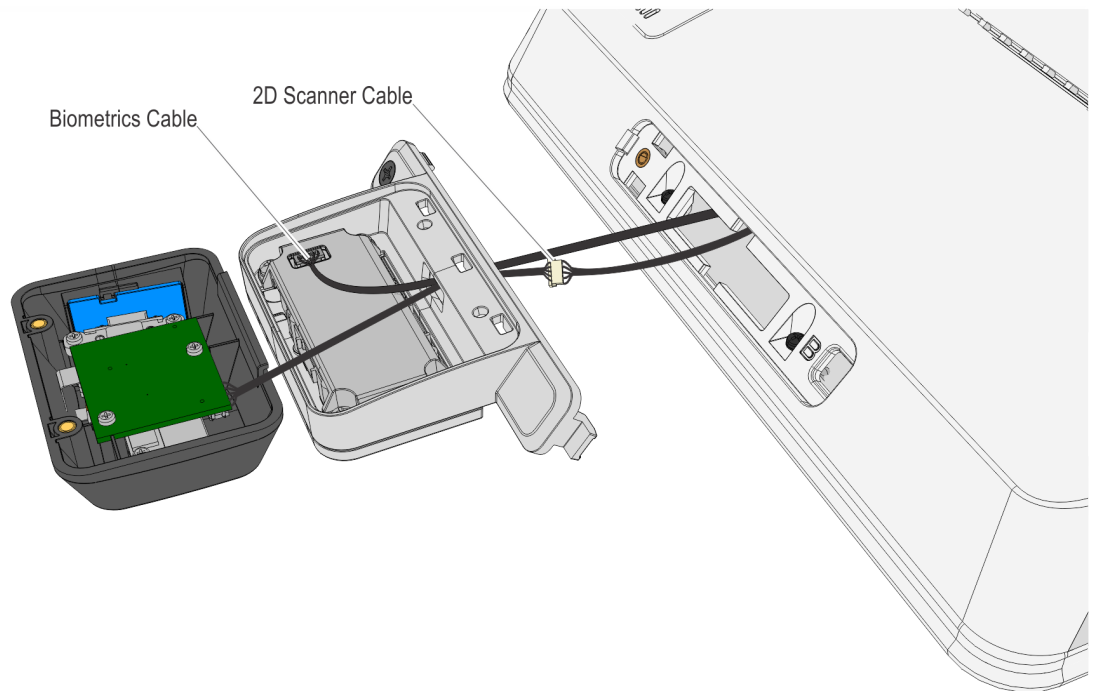
61531

- b. Rotate the 2D Scanner until it is detached.



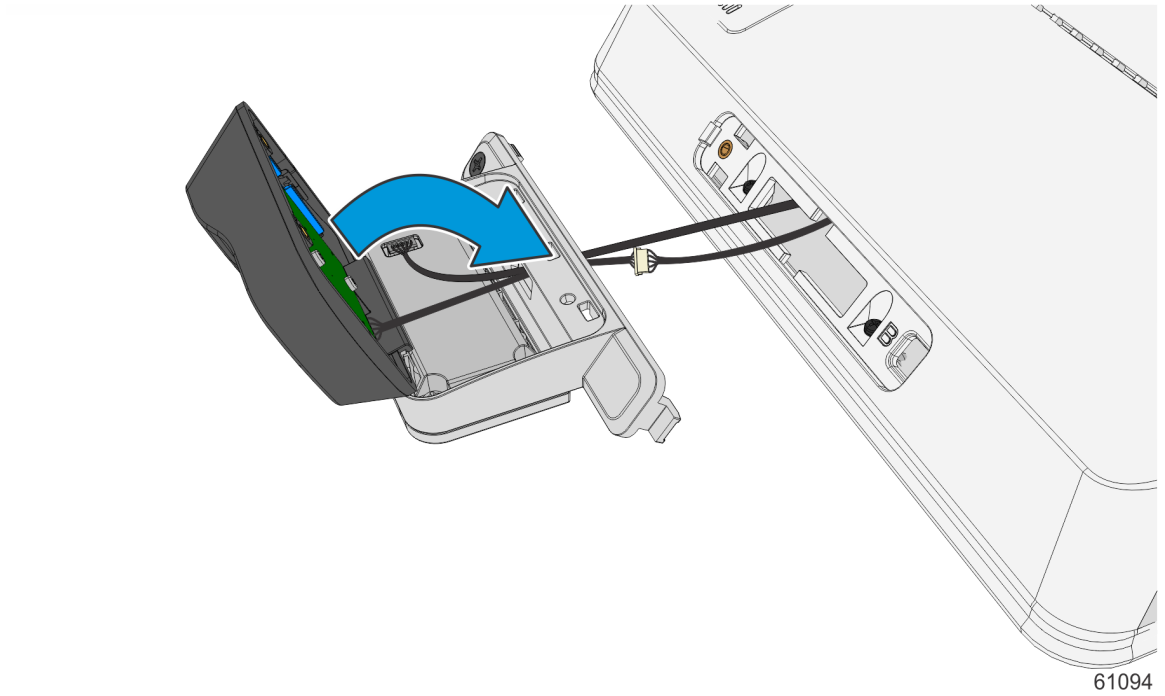
61533

- 3. Route and connect the Biometrics and 2D Scanner cables to the corresponding connectors through the opening in the bracket.

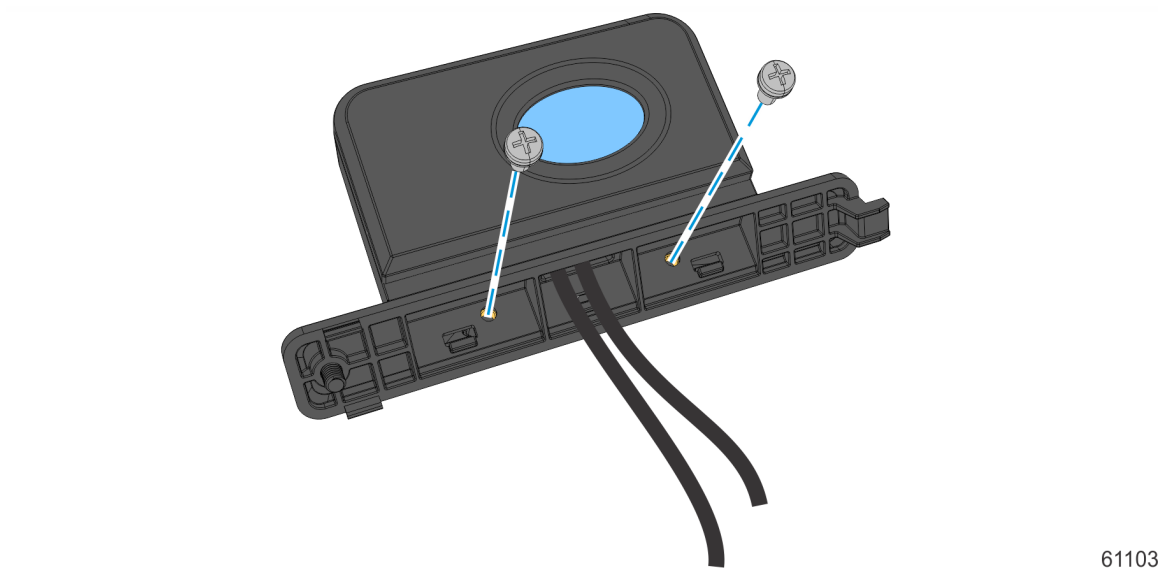


61101

4. Snap the 2D scanner into the bracket. Ensure the snaps are fully engaged.



5. Secure with screws (2).



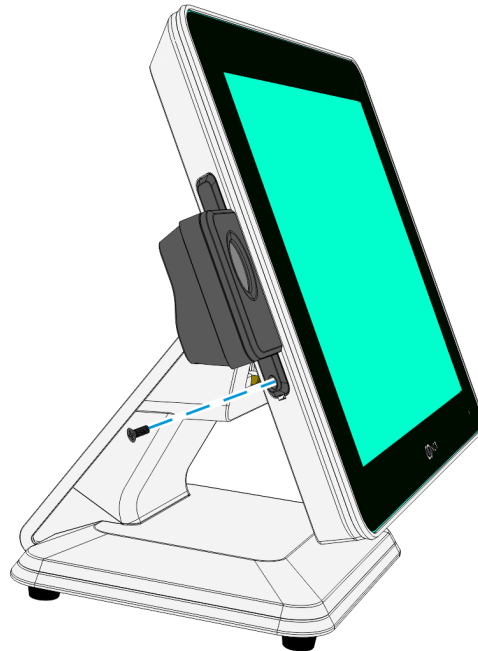
6. Gently push the biometrics and 2D scanner cables into the rear housing.

7. Hook the biometrics and 2D Scanner assembly into rear housing and snap into place.



60439

8. Secure with screw (1).



60440